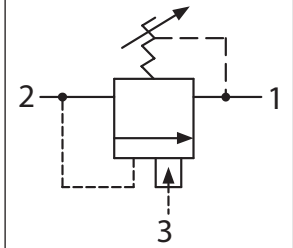


Up to 275 bar - 4 lpm

**Operation**

When used in combination with a pressure compensated regulating valve (e.g. D-DFPCROV) a typical application for the PUV is for pump unloading in an accumulator system. When the PUV setting is reached the PUV opens, venting the PCR valve's pilot signal. This unloads the pump until accumulator system pressure drops to 80% of the PUV setting. The PUV closes which blocks the PCR pilot signal to recharge the accumulator and the cycle is repeated.

**Symbol**



**Adjustment**

Turn  to increase pressure.

**Features**

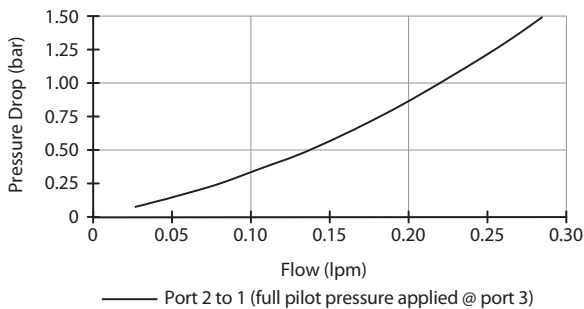
- Hardened parts for long life.
- Industry common cavity.



*Typical circuits require an orifice to be placed at ports (2) and (3).*

**Performance**

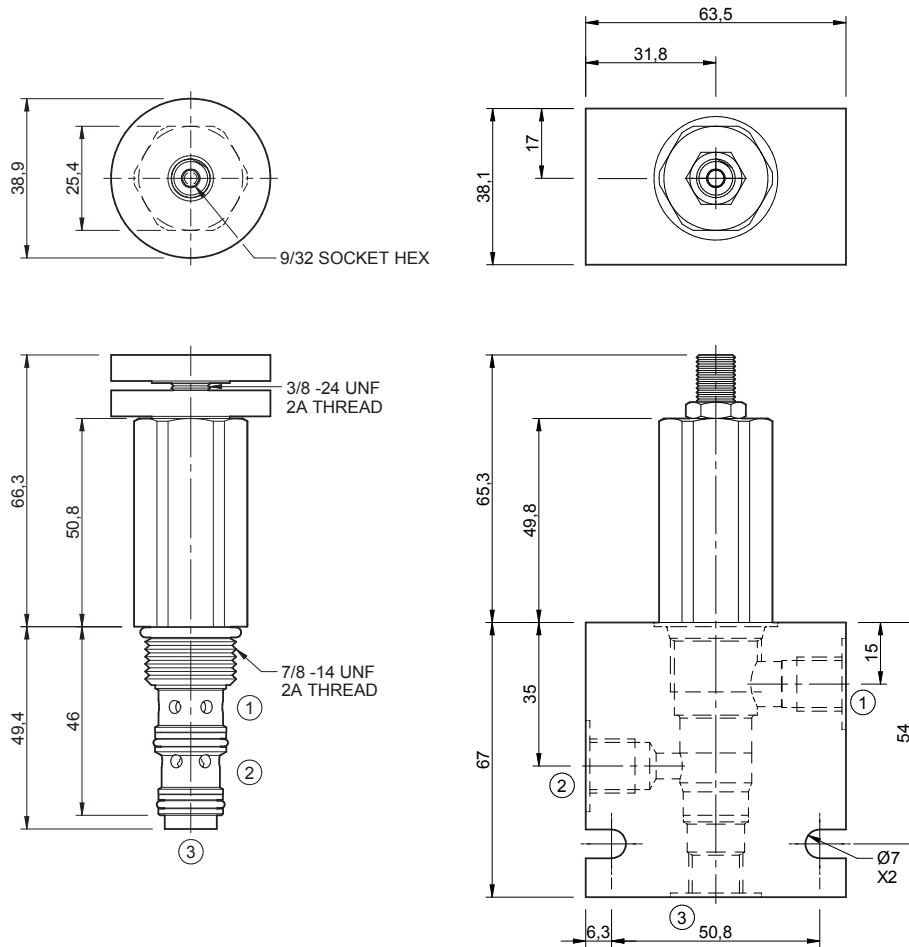
32 cSc / 38°C.



**Specifications**

Nom. Flow (lpm)	4
Max. Pressure (bar)	275
Hydraulic Oil	General purpose hydraulic fluid
Viscosity Range	3 to 640 cSt
Filtration	ISO 18/16/13
Operating Temp.	-40 to 120°C
Cartridge Torque	41 Nm
Cavity	DF10-3 (see cavity data page <b>CAV-DF10-3</b> )
Spare Seal Kit (Viton)	SK-DDEVHAA
Weight - Valve only	0.27 kg
Weight - Valve + Body	0.63 kg (alum) 1.33 kg (steel)

**Dimensions**  
[mm]



**Ordering Code**

**D-DEPUV**

