




Up to 210 bar - 38 lpm

Operation

The D-DFPWE blocks flow at ports (2) and (1). On attainment of a predetermined pressure at (3) the valve shifts to allow flow from (1) to (2).

Adjustment

Turn  to increase pressure.

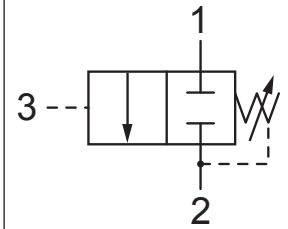
Features

- Hardened parts for long life.
- Optional spring ranges to 103 bar.
- Industry common cavity.



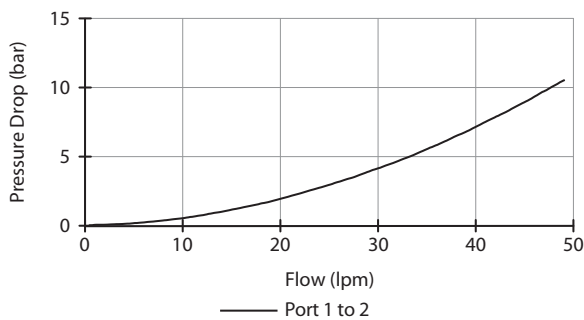
0.75 to 1.50 mm diameter orifice recommended beneath port (3).

Symbol



Performance

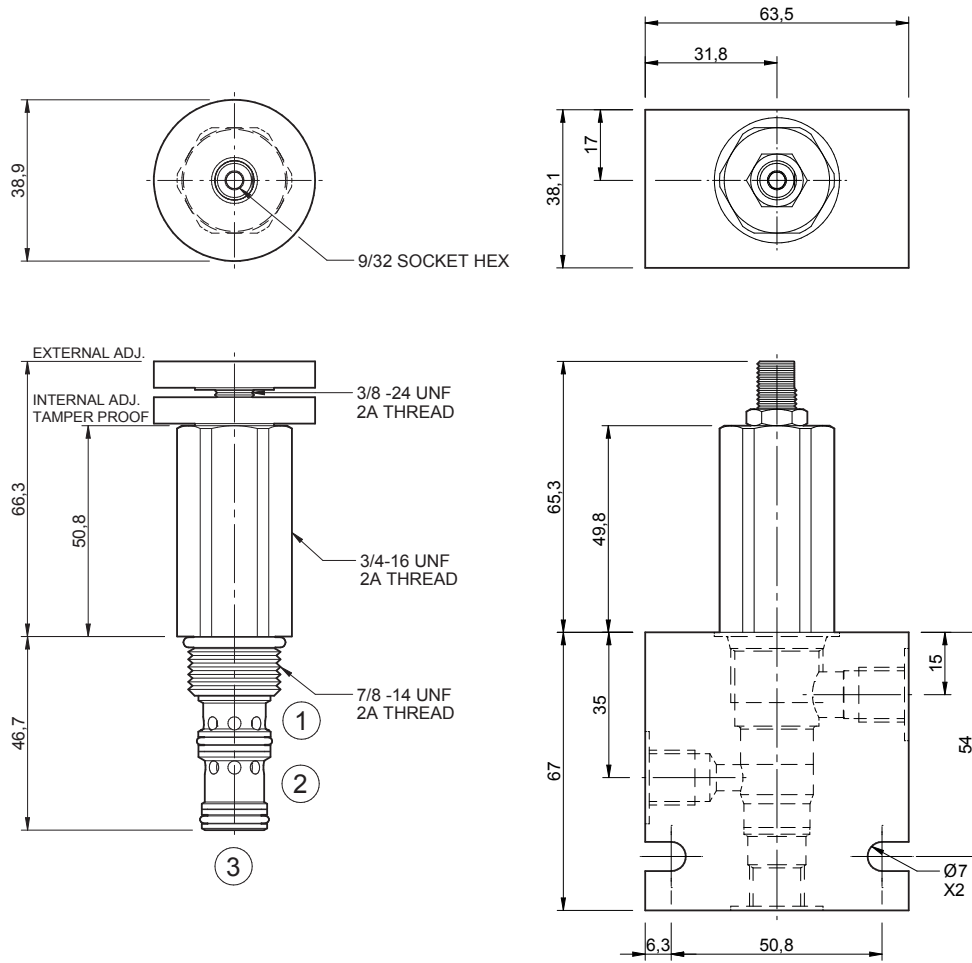
32 cSt / 38°C.



Specifications

Nom. Flow (lpm)	38
Max. Pressure (bar)	210
Internal Leakage (32 cSt)	82 cc/min per path
Hydraulic Oil	General purpose hydraulic fluid
Viscosity Range	3 to 640 cSt
Filtration	ISO 18/16/13
Operating Temp.	-40 to 120°C
Cartridge Torque	41 Nm
Cavity	DF10-3 (see cavity data page CAV-DF10-3)
Spare Seal Kit (Viton)	SK-DDFVHAA
Weight - Valve only	0.26 kg
Weight - Valve + Body	0.62 kg (alum) 1.29 kg (steel)

Dimensions
[mm]



Ordering Code

