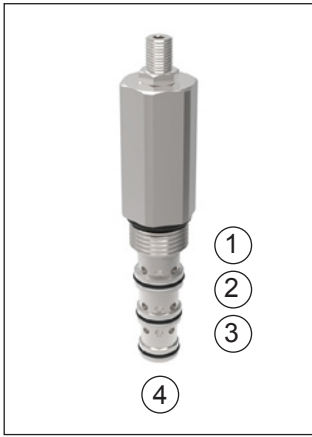


Pressure Control.

Sequence Valve, 4 Way Normally Closed, External Pilot - Size 10.

D-DGPSA



Up to 210 bar - 38 lpm

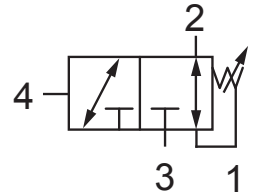
Operation

The D-DGPSA in neutral (un-piloted), allows flow between (1) and (2) bi-directionally, while blocking at (3). The spring chamber is constantly vented at (1).

On attainment of a predetermined pressure at (4), the cartridge shifts to close (1) to (2), while opening (2) to (3).

Note that the backpressure value at (1) must be added to the selected pressure setting to determine pilot pressure necessary to open valve.

Symbol



Adjustment

Turn  to increase pressure.

Features

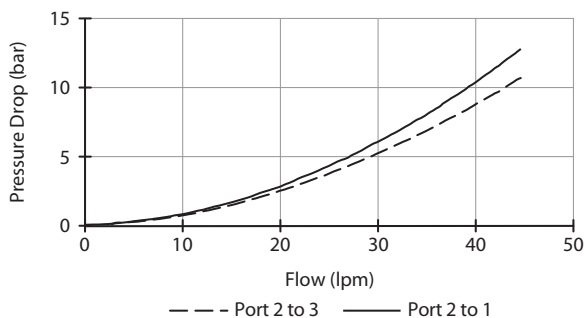
- Optional spring ranges to 103 bar.
- Hardened parts for long life.
- Industry common cavity.



0.75 to 1.50 mm diameter orifice recommended beneath port (4).

Performance

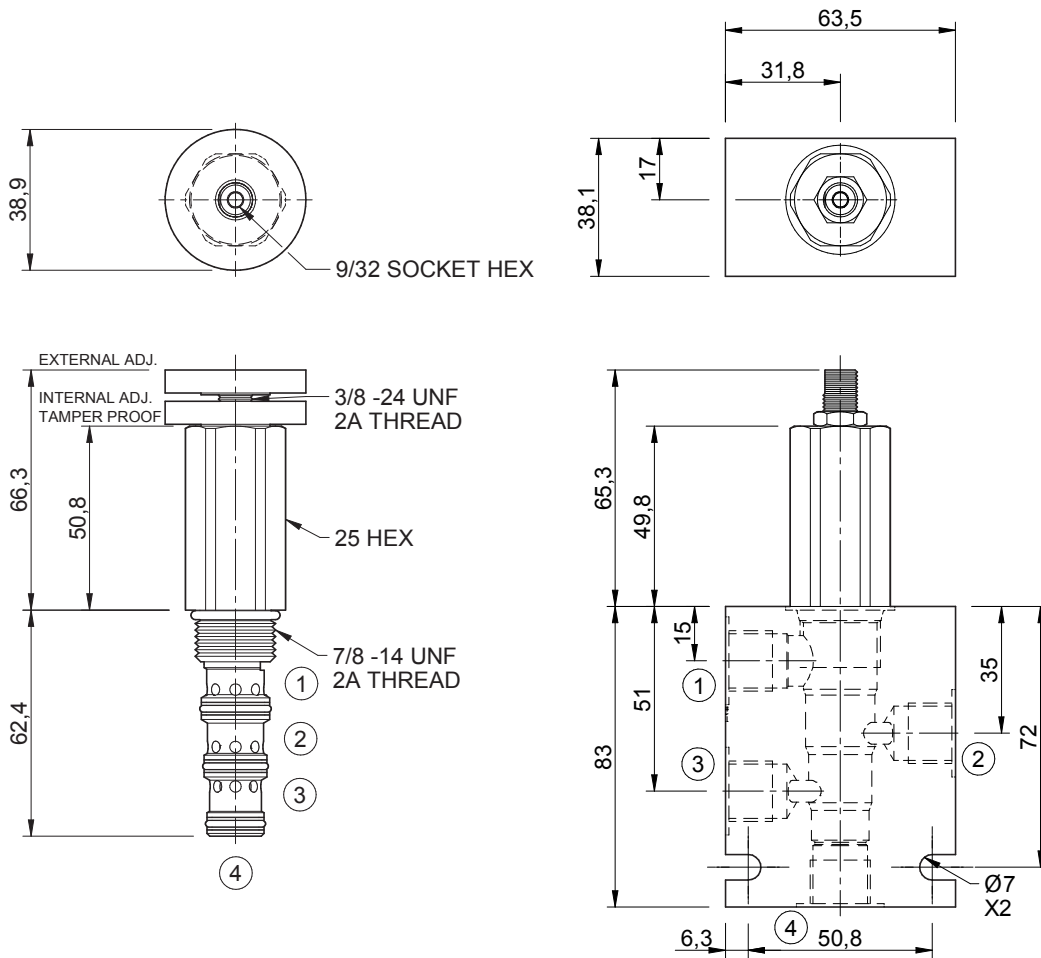
32 cSt / 38°C.



Specifications

Nom. Flow (lpm)	38
Max. Pressure (bar)	210
Internal Leakage (32 cSt)	82 cc/min per path
Hydraulic Oil	General purpose hydraulic fluid
Viscosity Range	3 to 640 cSt
Filtration	ISO 18/16/13
Operating Temp.	-40 to 120°C
Cartridge Torque	41 Nm
Cavity	DG10-4 (see cavity data page CAV-DG10-4)
Spare Seal Kit (Viton)	SK-DDGVHDDD
Weight - Valve only	0.28 kg
Weight - Valve + Body	0.74 kg (alum) 1.78 kg (steel)

Dimensions
[mm]



Ordering Code

