



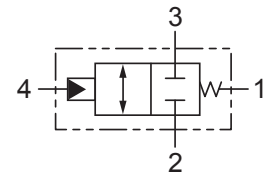
Up to 210 bar - 38 lpm

Operation

The D-DGPTO blocks flow at ports (3) and (2). On attainment of a predetermined pressure at port (4), the valve shifts to allow flow from port (3) to (2).

Spring Chamber is constantly vented to port (1).

Symbol



Features

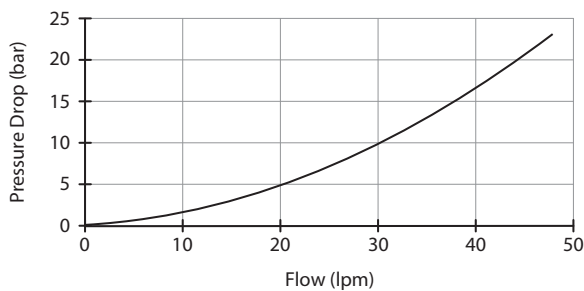
- Hardened parts for long life.
- Industry common cavity.



0.75 to 1.50 mm diameter orifice recommended beneath port (4).

Performance

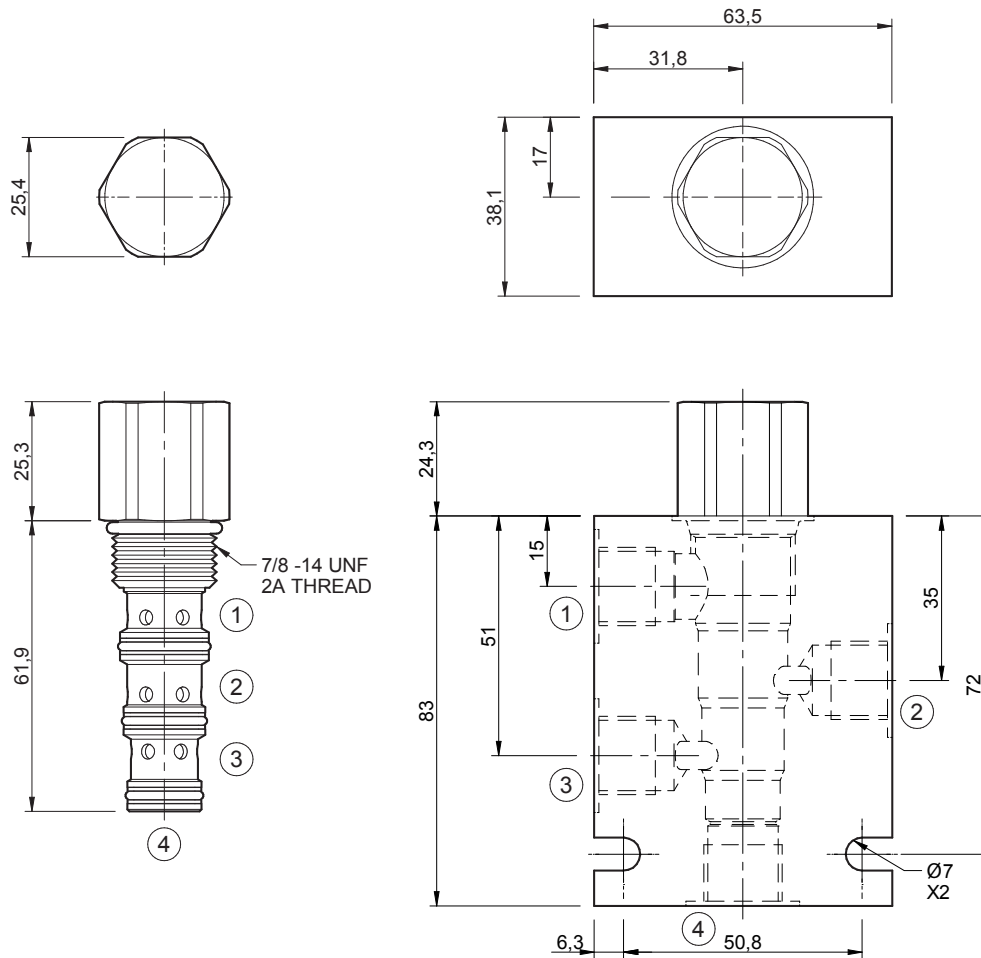
32 cSt / 38°C.



Specifications

| | |
|---------------------------|--|
| Nom. Flow (lpm) | 38 |
| Max. Pressure (bar) | 210 |
| Internal Leakage (32 cSt) | 82 cc/min per path |
| Hydraulic Oil | General purpose hydraulic fluid |
| Viscosity Range | 3 to 640 cSt |
| Filtration | ISO 18/16/13 |
| Operating Temp. | -40 to 120°C |
| Cartridge Torque | 41 Nm |
| Cavity | DG10-4 (see cavity data page CAV-DG10-4) |
| Spare Seal Kit (Viton) | SK-DDGVHDDD |
| Weight - Valve only | 0.18 kg |
| Weight - Valve + Body | 0.64 kg (alum) 1.66 kg (steel) |

Dimensions
[mm]



Ordering Code

