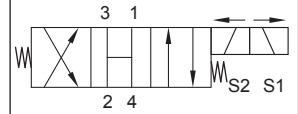


Up to 210 bar - 30 lpm

Symbol



Operation

This is a solenoid operated 4 way 3 position open centre spool valve. It is typically used for a stand alone system where in the mid de-energised position pressure (1), tank (4) and services (1) and (3) are all open to each other.

Energise solenoid (S1) to connect (2) to (1) and (3) to (4).

Energise solenoid (S2) to connect (2) to (3) and (1) to (4).

Manual override options available.

Features

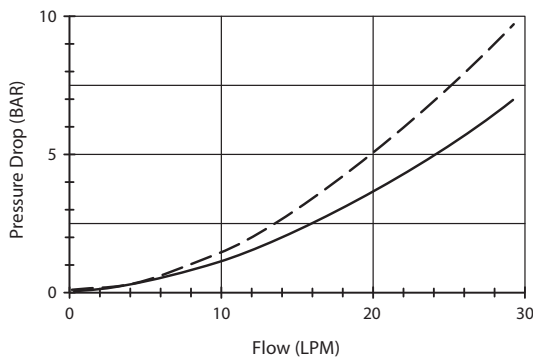
- Hardened parts for long life.
- Efficient wet-armature construction.
- Cartridges are voltage interchangeable.
- Industry common cavity.
- Unitised, molded coil design.
- Continuous duty rated solenoid.
- Optional coil voltages and terminations.
- Optional "I" Coil: Weatherproof, Thermal, Shock, Immersion Safe.



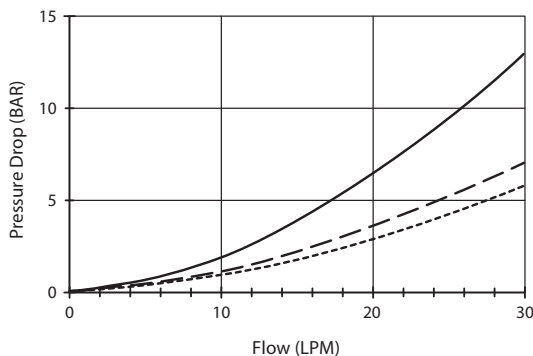
Uses "L" Coil.

Performance

32 cSt / 38°C.



--- Port 2 to 1 (eng S1) — Port 3 to 4 (eng S1)



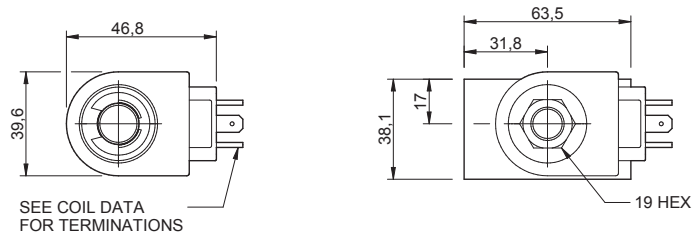
--- Port 2 to 4 (de-eng) - - - - - Port 1 to 4 (eng S2)
— Port 2 to 3 (eng S2)

Specifications

Max. Flow (lpm)	30
Max. pressure (bar)	210
Internal Leakage (32 cSt)	82 cc/min per path
Hydraulic oil	General purpose hydraulic fluid
Viscosity Range	3 to 640 cSt
Filtration	ISO 18/16/13
Operating temp.	-40 to 120°C
Voltage	DC / AC (see coil data page Coil-L)
Cartridge Torque	41 Nm
Coil Nut Torque	5 to 8 Nm
Cavity	DG10-4 (see cavity data page CAV-DG10-4)
Seal Kit	SK-DDGVHDDD
Weight - Cartridge only	0.23 kg
Weight - Cartridge + Coil	0.54 kg
Weight - Cartridge + Coil + Body	1.00 kg (alum) 1.87 kg (steel)

Dimensions

[mm]



To Override

Bi-Directional Override.

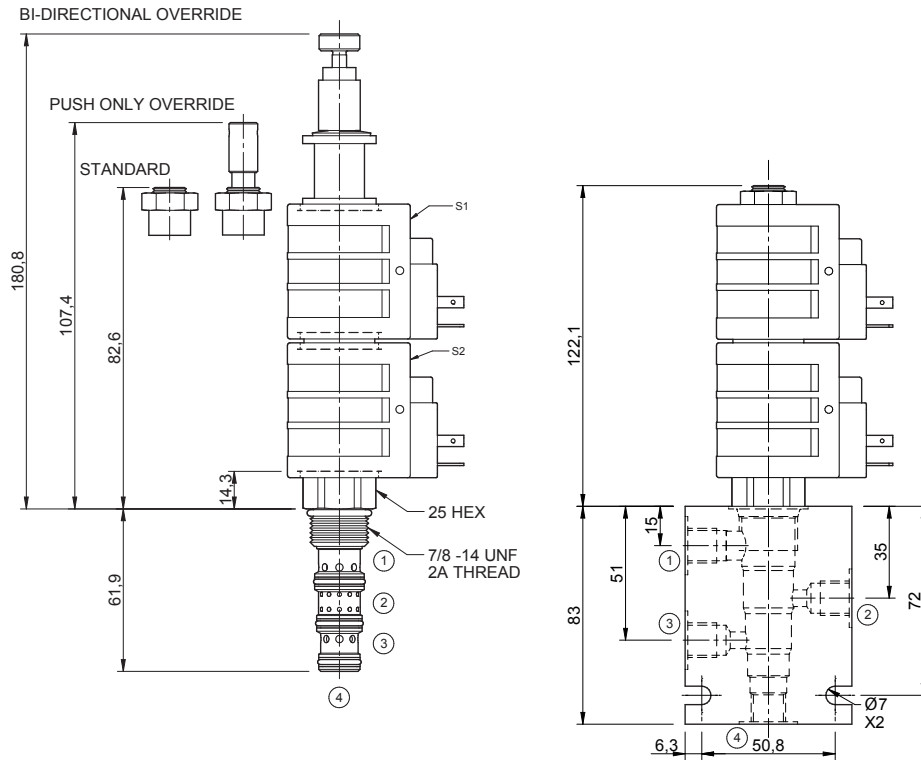
Push to shift in direction S2.
Pull to shift in direction S1.

Push Only Override.

Push to shift in direction S2.

Coils can be fitted in any orientation.

Refer to data sheet Coil-L for coil options.



Ordering Code

D-DGS40 — ****** — ****** ****** — ***** ***** *****

Options
00 - Nitrile
V0 - Viton
0M - Nitrile, bi-direct. override.
VM - Viton, bi-direct. override.
0P - Nitrile, push override.
VP - Viton, push override.

Coil termination
DL - Double lead
DS - Double spade
HC - EN 175301-803*
Options - See page Coil-L
Omit if coil is not required

Voltage
12 - 12 Vdc
24 - 24 Vdc
48 - 48 Vdc
25 - 24 Vac
11 - 110 Vac
23 - 240 Vac
Options - See page Coil-L

Port size (BSP)
A - 1/4"
B - 3/8"
Options - See page B-DDG

No. of ports
4 - 4 ports
Options - See page B-DDG

Body material
A - Aluminium
S - Steel

*Formerly DIN 43650 Hirschmann connector.