


Up to 240 bar - 23 lpm

**Operation**

The D-MANVA adjusts from fully open to fully closed by turning adjusting screw clockwise. When adjusted open the valve allows flow (1) to (2) and (2) to (1). When fully closed the valve blocks flow from (1) to (2) and (2) to (1).

**Adjustment**

Turn  to decrease flow and shut off.

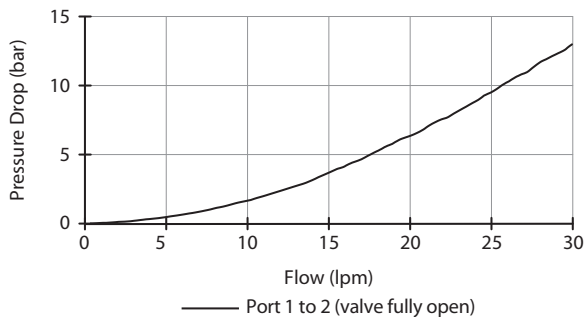
**Symbol**

**Features**

- Hardened cage and spool for long life.
- Industry common cavity.

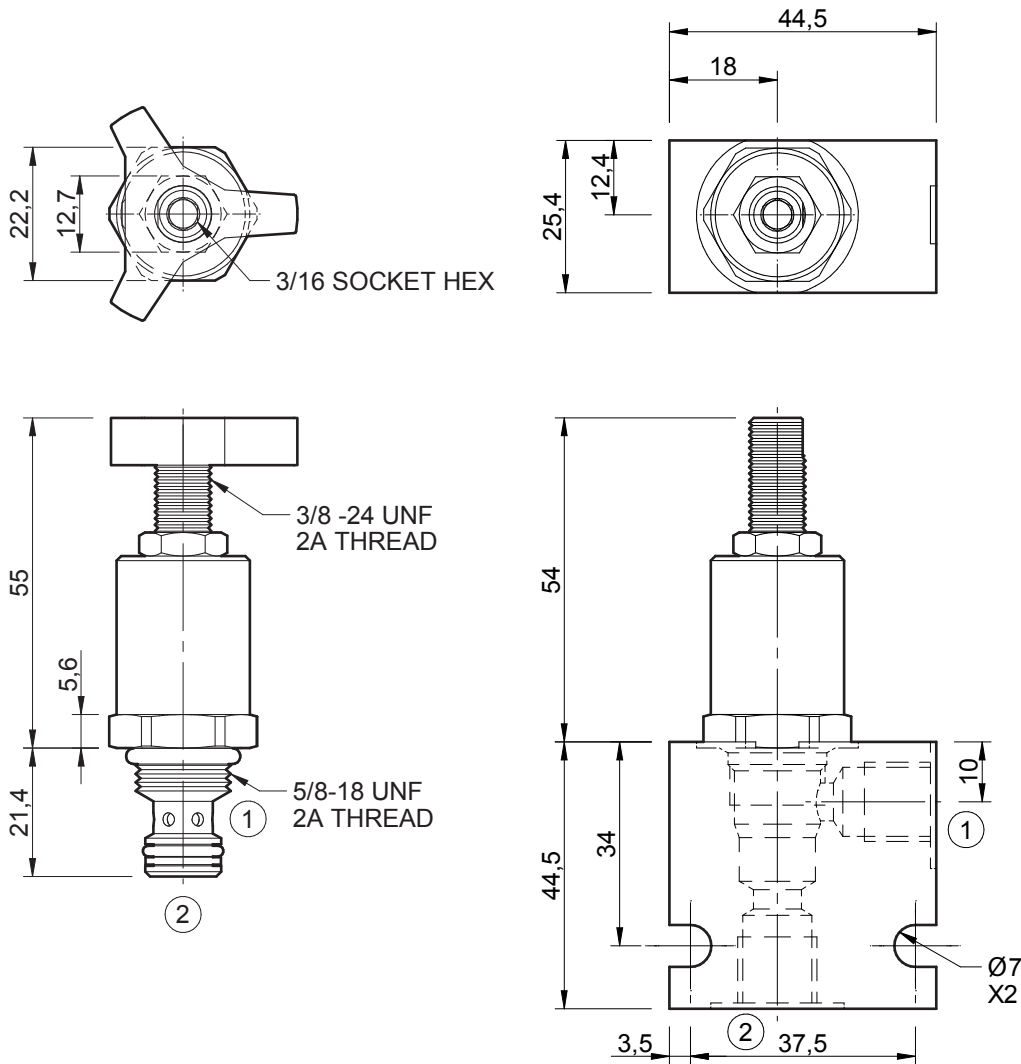
**Performance**

32 cSc / 38°C.


**Specifications**

Nom. Flow (lpm)	23
Max. Pressure (bar)	240
Hydraulic Oil	General purpose hydraulic fluid
Viscosity Range	3 to 640 cSt
Filtration	ISO 18/16/13
Operating Temp.	-40 to 120°C
Cartridge Torque	20 Nm
Cavity	MA07-2 (see cavity data page <a href="#">CAV-MA07-2</a> )
Spare Seal Kit (Viton)	SK-DMAVHD
Weight - Valve only	0.11 kg
Weight - Valve + Body	0.22 kg (alum) 0.43 kg (steel)

**Dimensions**  
[mm]



**Ordering Code**

**D-MANVA**

