

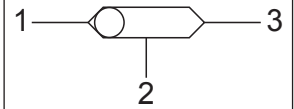


Up to 240 bar - 23 lpm

**Operation**

The D-PPCSB allows flow from the higher pressure of (1) or (3) to (2).

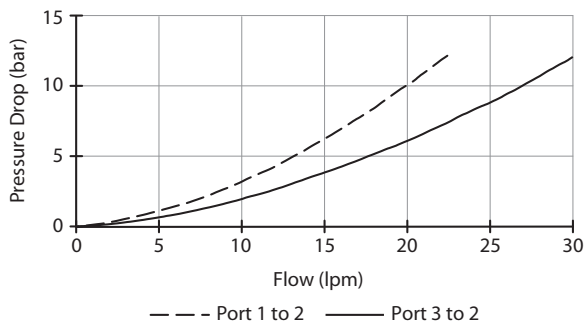
The valve is commonly used as a load sense to direct oil from the pressure side of a bidirectional hydraulic motor to a pressure released hydraulic brake.

**Symbol**

**Features**

- Hardened parts for long life.
- Industry common cavity

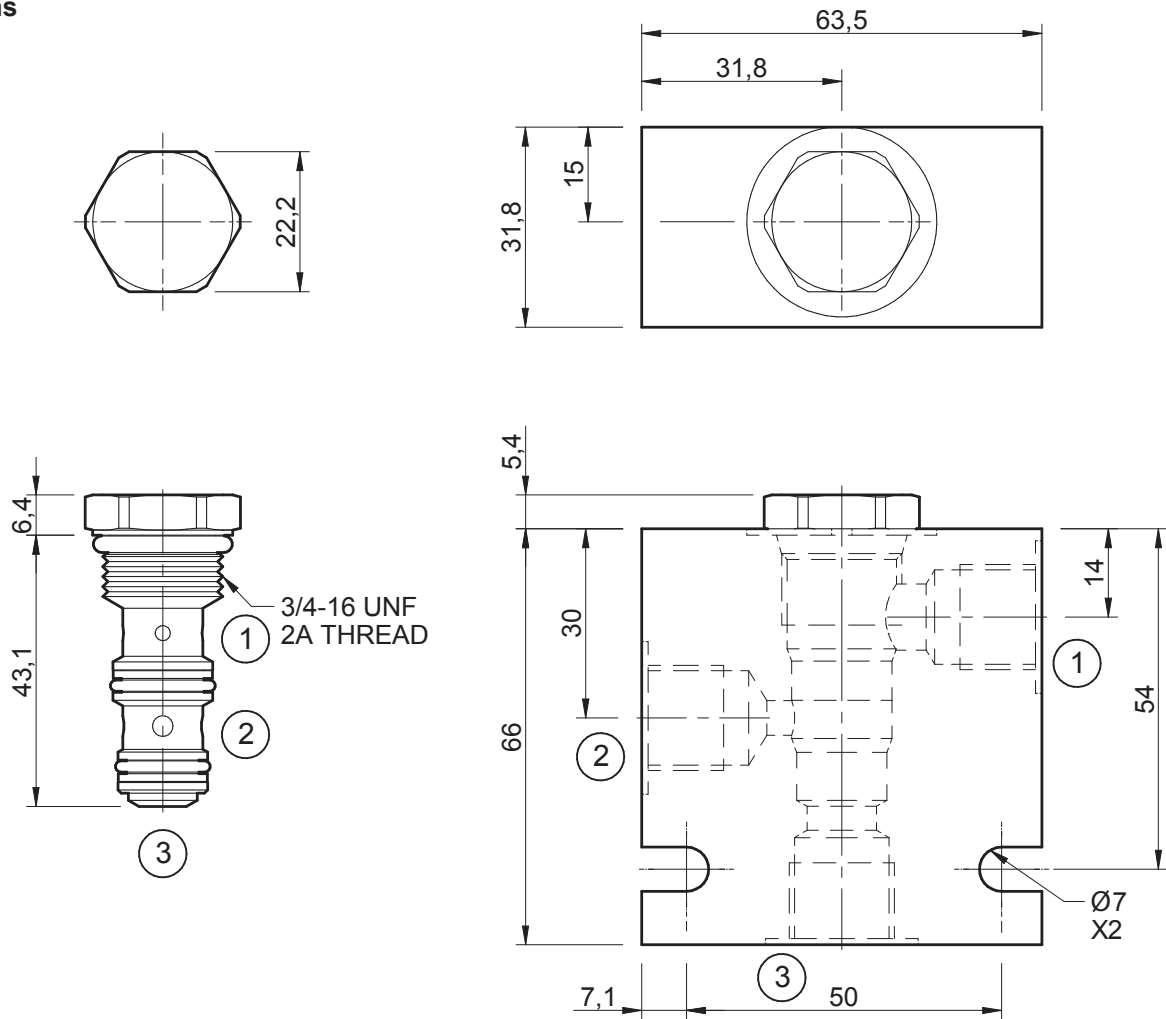
**Performance**

32 cSt / 38°C.


**Specifications**

Nom. Flow (lpm)	23
Max. Pressure (bar)	240
Internal Leakage (32 cSt)	16 cc/min
Hydraulic Oil	General purpose hydraulic fluid
Viscosity Range	3 to 640 cSt
Filtration	ISO 18/16/13
Operating Temp.	-40 to 120°C
Cartridge Torque	34 Nm
Cavity	PP08-3 (see cavity data page <b>CAV-PP08-3</b> )
Spare Seal Kit (Viton)	SK-DPPVHDD
Weight - Valve only	0.07 kg
Weight - Valve + Body	0.33 kg (alum) 0.82 kg (steel)

**Dimensions**  
[mm]



**Ordering Code**

**D-PPCSB**

