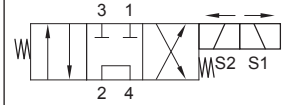


Up to 210 bar - 11 lpm

Symbol



Operation

This is a solenoid operated 4 way 3 position tandem centre spool valve which is used to provide directional control in a hydraulic circuit. In the mid de-energised position service ports (1) and (3) are blocked, with pressure (2) connected to (4). Port (4) can be connected directly to Tank or connected in series to port (2) of an adjacent valve of the same type to provide multivalve series circuit control.

Energise solenoid (S1) to connect (2) to (1) and (3) to (4).

Energise solenoid (S2) to connect (2) to (3) and (1) to (4).

Manual override options available.

Features

- Hardened parts for long life.
- Efficient wet-armature construction.
- Cartridges are voltage interchangeable.
- Industry common cavity.
- Continuous duty rated solenoid.
- Optional coil voltages and terminations.



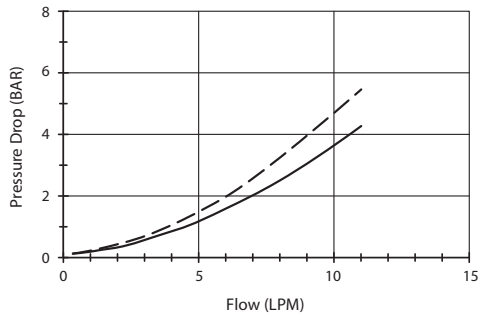
Uses "P" Power coil.

For higher flow see D-PQS4N.

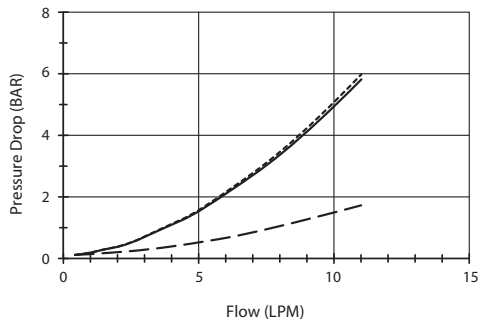
"OP" override is a push only nondetented button that actuates S2 direction.

Performance

32 cSt / 38°C.



--- Port 1 to 4 (eng S1) — Port 2 to 3 (eng S1)

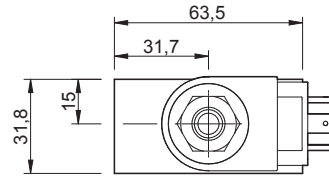
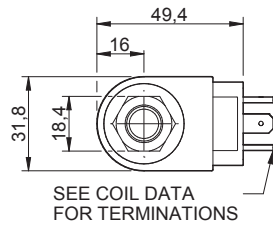


--- Port 2 to 4 (de-eng) - - - - Port 2 to 1 (eng S2)
— Port 3 to 4 (eng S2)

Specifications

Max. Flow (lpm)	11
Max. pressure (bar)	210
Internal Leakage (32 cST)	82 cc/min at 210 bar
Hydraulic oil	General purpose hydraulic fluid
Viscosity Range	3 to 640 cSt
Filtration	ISO 18/16/13
Operating temp.	-40 to 120°C
Voltage	DC / AC (see coil data page Coil-P)
Cartridge Torque	34 Nm
Coil Nut Torque	5 to 8 Nm
Cavity	PQ08-4 (see cavity data page CAV-PQ08-4)
Spare Seal Kit	SK-DPQVHDDD
Weight - Cartridge only	0.19 kg
Weight - Cartridge + Coil	0.38 kg
Weight - Cartridge + Coil + Body	0.75 kg (alum) 1.44 kg (steel)

Dimensions
[mm]



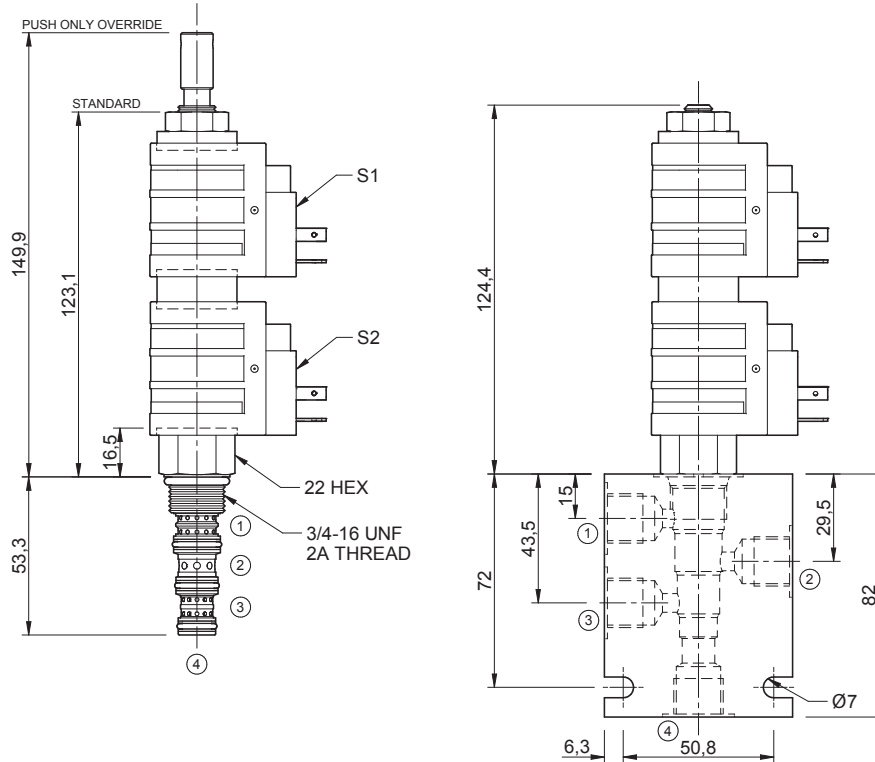
SEE COIL DATA FOR TERMINATIONS

To Override

Push to override.

Coils can be fitted in any orientation.

Refer to data sheet Coil-P for coil options.



Ordering Code

D-PQS4R - ****** - ****** ****** - ***** ***** *****

Options
00 - Nitrile
V0 - Viton
0P - Nitrile, push only overr.
VP - Viton, push only overr.

Coil termination
DL - Double lead
DS - Double spade
HC - EN 175301-803*
CL - Conduit lead
Options - See page Coil-P
Omit if coil is not required

Voltage
12 - 12 Vdc
24 - 24 Vdc
48 - 48 Vdc
25 - 24 Vac
11 - 110 Vac
23 - 240 Vac
Options - See page Coil-P

Port size (BSP)
A - 1/4"
B - 3/8"
Options - See page B-DPQ

No. of ports
4 - 4 ports
Options - See page B-DPQ

Body material
A - Aluminium
S - Steel

*Formerly DIN 43650 Hirschmann connector.