



Up to 240 bar - 150 lpm

**Operation**

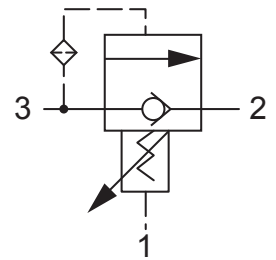
The D-SLPWB blocks flow from ports (3) to (2). On attainment of a predetermined pressure at (3) the valve shifts to allow flow from (3) to (2). Port (1) should be a tank line.

Reverse flow from (2) to (3) occurs when the pressure at port (2) is at least 3.1 bar higher than at port (3).

**Features**

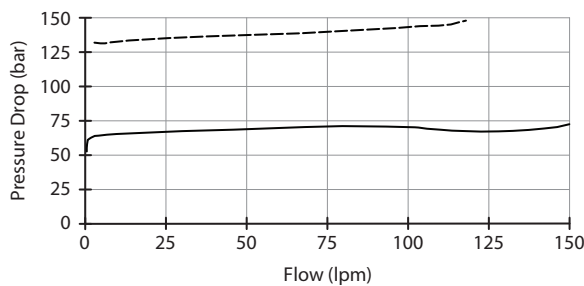
- Hardened parts for long life.
- Industry common cavity.

**Symbol**



**Performance**

32 cSc / 38°C.

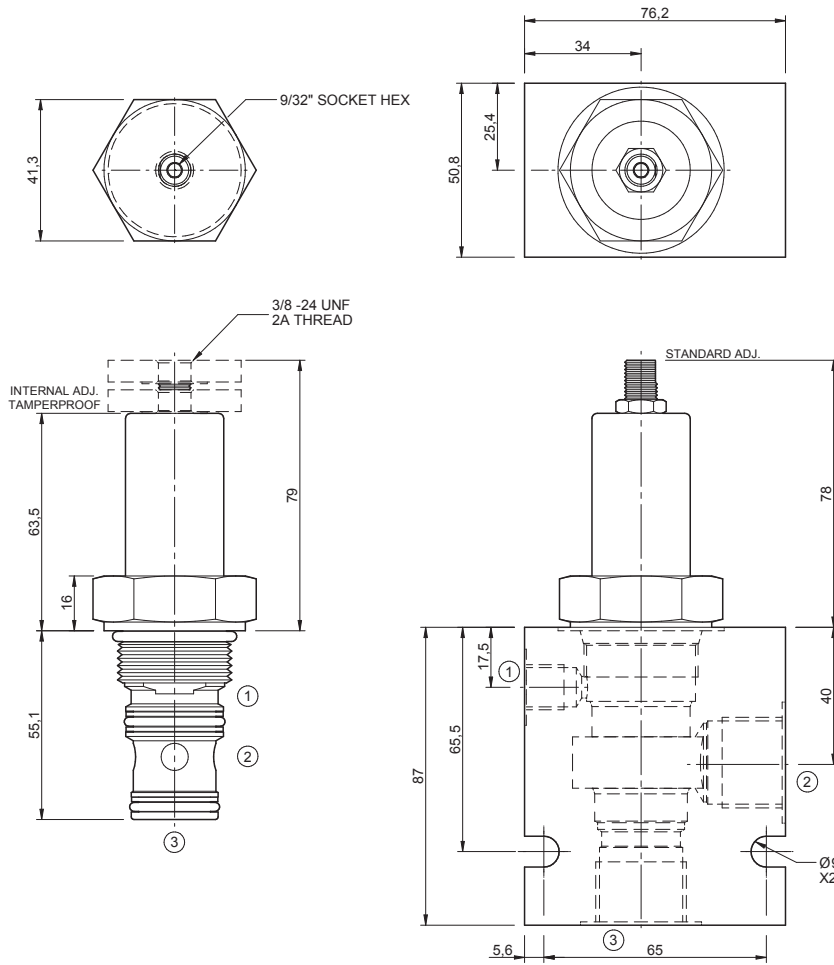


**Specifications**

Nom. Flow (lpm)	150
Max. Pressure (bar)	240
Hydraulic Oil	General purpose hydraulic fluid
Viscosity Range	3 to 640 cSt
Filtration	ISO 18/16/13
Operating Temp.	-40 to 120°C
Cartridge Torque	122 Nm
Cavity	SL16-3 (see cavity data page <b>CAV-SL16-3</b> )
Spare Seal Kit (Viton)	SK-DSL VHDE
Weight - Valve only	0.52 kg
Weight - Valve + Body	1.19 kg (alum) 2.50 kg (steel)

**Dimensions**

[mm]



**Ordering Code**

