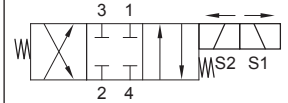


Up to 210 bar - 23 lpm

### Symbol



### Operation

This is a solenoid operated 4 way 3 position closed centre spool valve which can be used as a directional control for a parallel system. In the mid de-energised position, Pressure (2), Tank (4) and series ports (3) and (1) are closed.

Energise solenoid (S1) to connect (2) to (1) and (3) to (4).

Energise solenoid (S2) to connect (2) to (3) and (1) to (4).

**Manual override options available.**

### Features

- Hardened parts for long life.
- Efficient wet-armature construction.
- Cartridges are voltage interchangeable.
- Industry common cavity.
- Unitised, molded coil design.
- Continuous duty rated solenoid.
- Optional coil voltages and terminations.
- Optional "I" Coil: Weatherproof, Thermal, Shock, Immersion Safe.

Uses "P" Power coil.



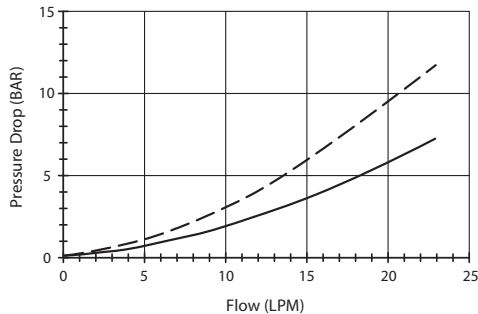
For higher flow see D-PQS4P.

Flow rating based on maximum differential load of 69 bar.

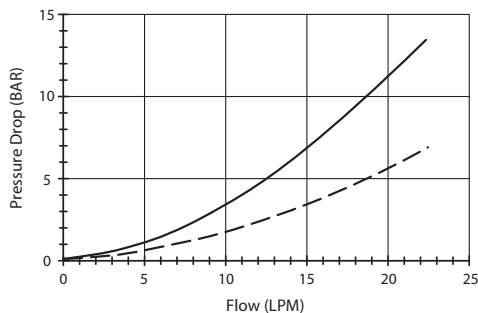
"OP" override is a push only non-detented button that actuates S2 direction.

### Performance

32 cSt / 38°C.



--- Port 2 to 1 (eng S1)    — Port 3 to 4 (eng S1)

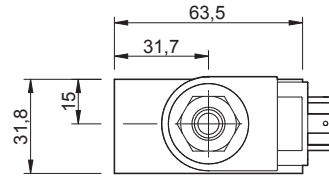
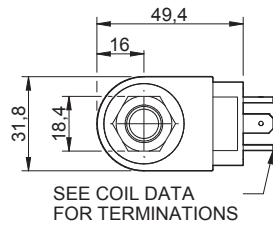


--- Port 1 to 4 (eng S2)    — Port 2 to 3 (eng S2)

### Specifications

|                                  |  |
|----------------------------------|--|
| Max. Flow (lpm)                  | 23   |
| Max. pressure (bar)              | 210  |
| Internal Leakage (32 cSt)        | 82 cc/min per path                               |
| Hydraulic oil                    | General purpose hydraulic fluid                  |
| Viscosity Range                  | 3 to 640 cSt                                     |
| Filtration                       | ISO 18/16/13                                     |
| Operating temp.                  | -40 to 120°C                                     |
| Voltage                          | DC / AC (see coil data page <b>Coil-P</b> )      |
| Cartridge Torque                 | 34 Nm  |
| Coil Nut Torque                  | 5 to 8 Nm  |
| Cavity                           | PQ08-4 (see cavity data page <b>CAV-PQ08-4</b> ) |
| Spare Seal Kit                   | SK-DPQVHDDD                                      |
| Weight - Cartridge only          | 0.19 kg  |
| Weight - Cartridge + Coil        | 0.38 kg  |
| Weight - Cartridge + Coil + Body | 0.75 kg (alum) 1.44 kg (steel)                   |

**Dimensions**  
[mm]



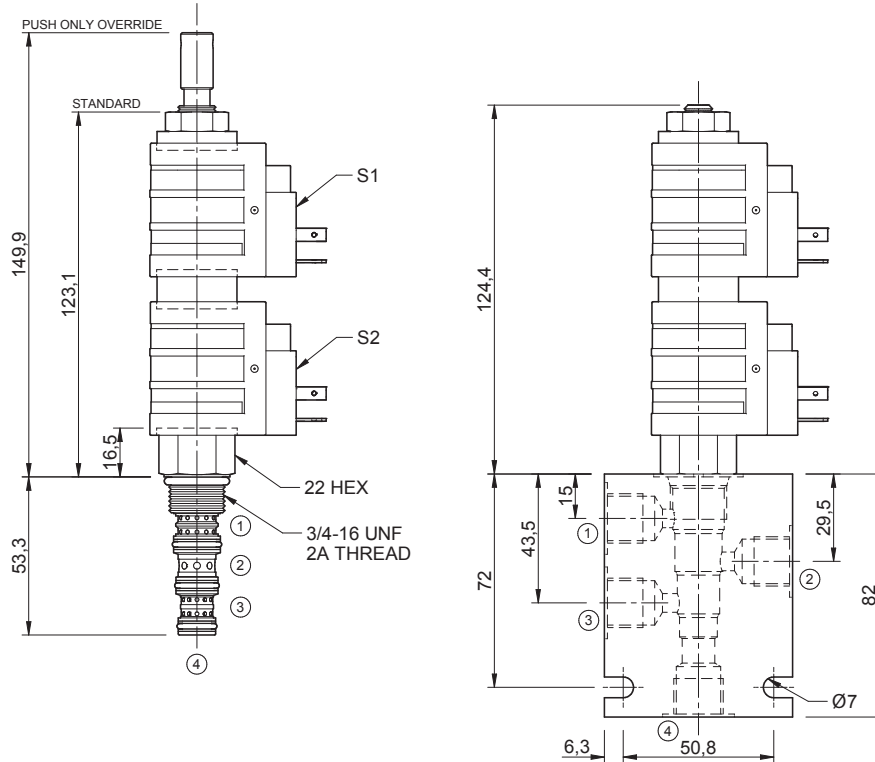
SEE COIL DATA FOR TERMINATIONS

**To Override**

Push to override.

Coils can be fitted in any orientation.

Refer to data sheet Coil-P for coil options.



**Ordering Code**

D-PQS4P — \*\* — \*\* — \*\* — \* — \* — \*

| Options                        |
|--------------------------------|
| 00 - Nitrile                   |
| V0 - Viton                     |
| 0P - Nitrile, push only overr. |
| VP - Viton, push only overr.   |

| Coil termination             |
|------------------------------|
| DL - Double lead             |
| DS - Double spade            |
| HC - EN 175301-803*          |
| CL - Conduit lead            |
| Options - See page Coil-P    |
| Omit if coil is not required |

| Voltage                   |
|---------------------------|
| 12 - 12 Vdc               |
| 24 - 24 Vdc               |
| 48 - 48 Vdc               |
| 25 - 24 Vac               |
| 11 - 110 Vac              |
| 23 - 240 Vac              |
| Options - See page Coil-P |

| Port size (BSP)          |
|--------------------------|
| A - 1/4"                 |
| B - 3/8"                 |
| Options - See page B-DPQ |

| No. of ports             |
|--------------------------|
| 4 - 4 ports              |
| Options - See page B-DPQ |

| Body material |
|---------------|
| A - Aluminium |
| S - Steel     |

\*Formerly DIN 43650 Hirschmann connector.