

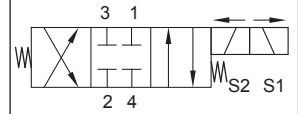
Up to 210 bar - 13 lpm

Operation

This is a solenoid operated 4 way 3 position closed centre spool valve which can be used as a directional control for a parallel system. In the mid de-energised position, Pressure (2), Tank (4) and series ports (3) and (1) are closed.

Energise solenoid (S1) to connect (2) to (1) and (3) to (4).

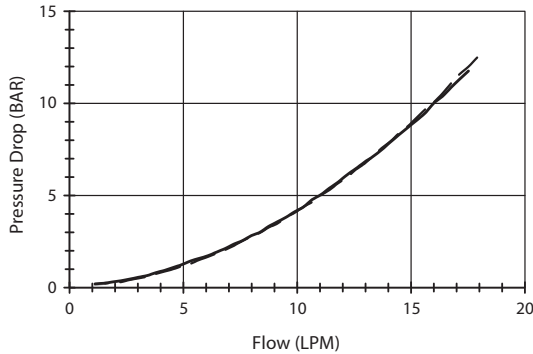
Energise solenoid (S2) to connect (2) to (3) and (1) to (4).

Symbol

Features

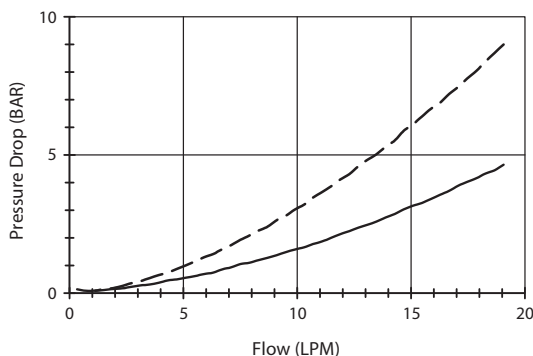
- Hardened parts for long life.
- Efficient wet-armature construction.
- Cartridges are voltage interchangeable.
- Industry common cavity.
- Unitised, molded coil design.
- Continuous duty rated solenoid.
- Optional coil voltages and terminations.
- Optional "I" Coil: Weatherproof, Thermal, Shock, Immersion Safe.

Performance

32 cSt / 38°C.



--- Port 2 to 1 (eng S1) ——— Port 3 to 4 (eng S1)

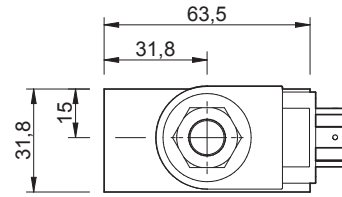
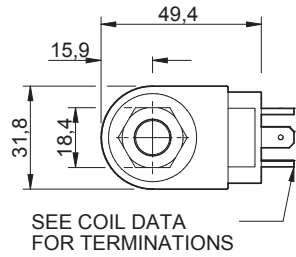


--- Port 2 to 3 (eng S2) ——— Port 1 to 4 (eng S2)

Specifications

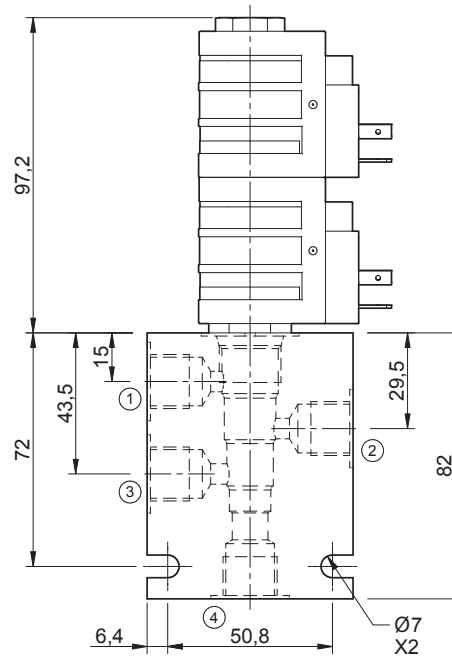
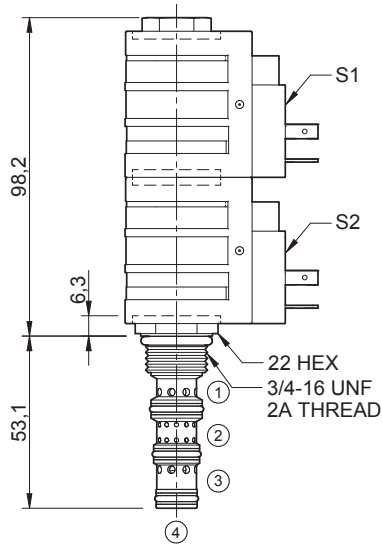
Max. Flow (lpm)	13 lpm
Max. pressure (bar)	210
Internal Leakage (32 cSt)	163 ml/min per path
Hydraulic oil	General purpose hydraulic fluid
Viscosity Range	3 to 640 cSt
Filtration	ISO 18/16/13
Operating temp.	-40 to 120°C
Voltage	DC / AC (see coil data page Coil-P)
Cartridge Torque	34 Nm
Coil Nut Torque	5 to 8 Nm
Cavity	PQ08-4 (see cavity data page CAV-PQ08-4)
Spare Seal Kit	SK-DPQVHDDD
Weight - Cartridge only	0.19 kg
Weight - Cartridge + Coils	0.57 kg
Weight - Cartridge + Coils + Body	0.95 kg (alum) 1.66 kg (steel)

Dimensions
[mm]



SEE COIL DATA FOR TERMINATIONS

Coils can be fitted in any orientation.
Refer to data sheet Coil-P for coil options.



Ordering Code

D-VQS4Q

Options	Coil termination	Voltage	Port size (BSP)	No. of ports	Body material
00 - Nitrile	DL - Double lead	06 - 06 Vdc	A - 1/4"	4 - 4 ports	A - Aluminium
V0 - Viton	DT - Deutsch on Leads DT04-2P	12 - 12 Vdc	B - 3/8"	Options - See page B-DPQ	S - Steel
	ML - Metric-Pack on Leads	24 - 24 Vdc	Options - See page B-DPQ		
	PL - Packard on Leads	36 - 36 Vdc			
	WL - Weatherpack on Leads	48 - 48 Vdc			
	SS - Single spade	25 - 24 Vac			
	DS - Double spade	11 - 120 Vac			
	HC - EN 175301-803* (AC&DC)	22 - 220 Vac			
	CL - Conduit Lead - (AC Only)	44 - 440 Vac			
	DI - Deutsch	Options - See page Coil-P			
	'I' coils (12 & 24 volts only) weather/immersion proof (IP69)				
	IA - AMP superseal				
	ID - Deutsch				
	IJ - AMP Jr. Timer				
	IM - Metripak				
	Options - See page Coil-P				
	Omit if coil is not required				

*Formerly DIN 43650 Hirschmann connector.