

Up to 210 bar - 9 lpm

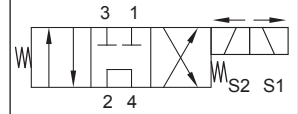
Operation

This is a solenoid operated 4 way 3 position tandem centre spool valve which is used to provide directional control in a hydraulic circuit. In the mid de-energised position service ports (1) and (3) are blocked, with pressure (2) connected to (4). Port (4) can be connected directly to Tank or connected in series to port (2) of an adjacent valve of the same type to provide multivalve series circuit control.

Energise solenoid (S1) to connect (2) to (1) and (3) to (4).

Energise solenoid (S2) to connect (2) to (3) and (1) to (4).

Symbol

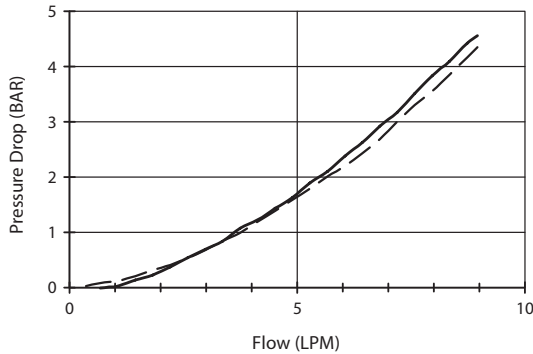


Features

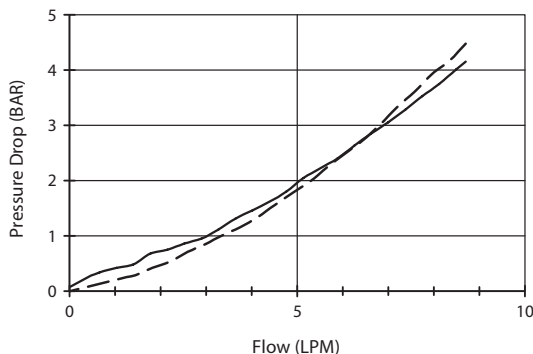
- Hardened parts for long life.
- Efficient wet-armature construction.
- Cartridges are voltage interchangeable.
- Industry common cavity.
- Unitised, molded coil design.
- Continuous duty rated solenoid.
- Optional coil voltages and terminations.
- Optional "I" Coil: Weatherproof, Thermal, Shock, Immersion Safe.

Performance

32 cSt / 38°C.



--- Port 2 to 3 (eng S1) ——— Port 1 to 4 (eng S1)

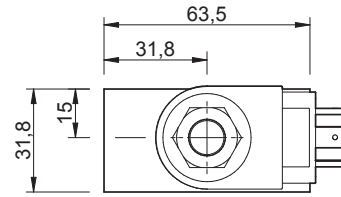
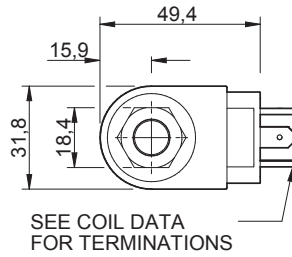


--- Port 2 to 1 (eng S2) ——— Port 3 to 4 (eng S2)

Specifications

Max. Flow (lpm)	9
Max. pressure (bar)	210
Internal Leakage (32 cSt)	245 ml/min per path
Hydraulic oil	General purpose hydraulic fluid
Viscosity Range	3 to 640 cSt
Filtration	ISO 18/16/13
Operating temp.	-40 to 120°C
Voltage	DC / AC (see coil data page Coil-P)
Cartridge Torque	34 Nm
Coil Nut Torque	5 to 8 Nm
Cavity	PQ08-4 (see cavity data page CAV-PQ08-4)
Spare Seal Kit	SK-DPQVHDDD
Weight - Cartridge only	0.19 kg
Weight - Cartridge + Coils	0.57 kg
Weight - Cartridge + Coils + Body	0.95 kg (alum) 1.66 kg (steel)

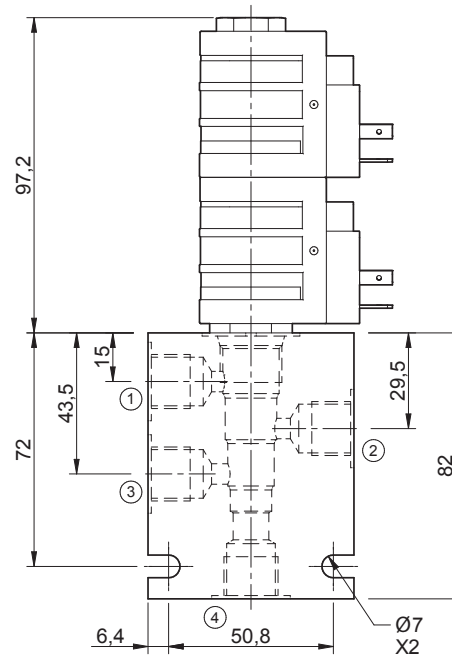
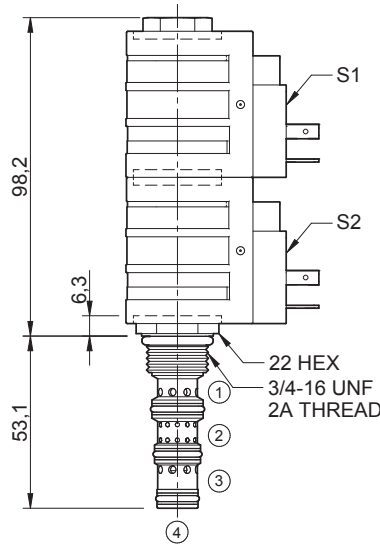
Dimensions
[mm]



SEE COIL DATA FOR TERMINATIONS

Coils can be fitted in any orientation.

Refer to data sheet Coil-P for coil options.



Ordering Code

D-VQS4R

	**	**	**	*	*	*
Options	Coil termination	Voltage	Port size (BSP)	No. of ports	Body material	
00 - Nitrile	DL - Double lead	06 - 06 Vdc	A - 1/4"	4 - 4 ports	A - Aluminium	
V0 - Viton	DS - Double spade	12 - 12 Vdc	B - 3/8"	Options - See page B-DPQ	S - Steel	
	HC - EN 175301-803*	24 - 24 Vdc	Options - See page B-DPQ			
	CL - Conduit lead	36 - 36 Vdc				
	Options - See page Coil-D	48 - 48 Vdc				
	Omit if coil is not required	25 - 24 Vac				
		11 - 120 Vac				
		22 - 220 Vac				
		44 - 440 Vac				
		Options - See page Coil-P				

*Formerly DIN 43650 Hirschmann connector.