

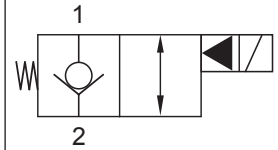
Up to 275 bar - 57 lpm


Operation

This is a solenoid operated 2 way normally closed poppet valve which is typically used to lock a load in position. When energised the poppet opens and releases the load from 1 to 2. De-energised the valve allows free flow from 2 to 1.

In the energised position it should be noted that 2 to 1 flow is restricted to only a pilot flow rate. If free flow is required in both directions when energised, valve type S2B should be used.

This valve can also be used as a directional valve.

Symbol

Features

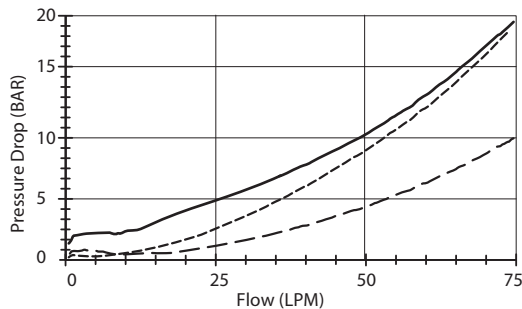
- Hardened parts for long life.
- Efficient wet-armature construction.
- Cartridges are voltage interchangeable.
- Industry common cavity.
- Unitised, molded coil design.
- Continuous duty rated solenoid.
- Optional coil voltages and terminations.
- Optional "I" Coil: Weatherproof, Thermal, Shock, Immersion Safe.



Uses "L" Coil.

Performance

32 cSt / 38°C.



- - - Port 1 to 2 (eng) - - - - Port 2 to 1 (eng)
 ——— Port 2 to 1 (de-eng)

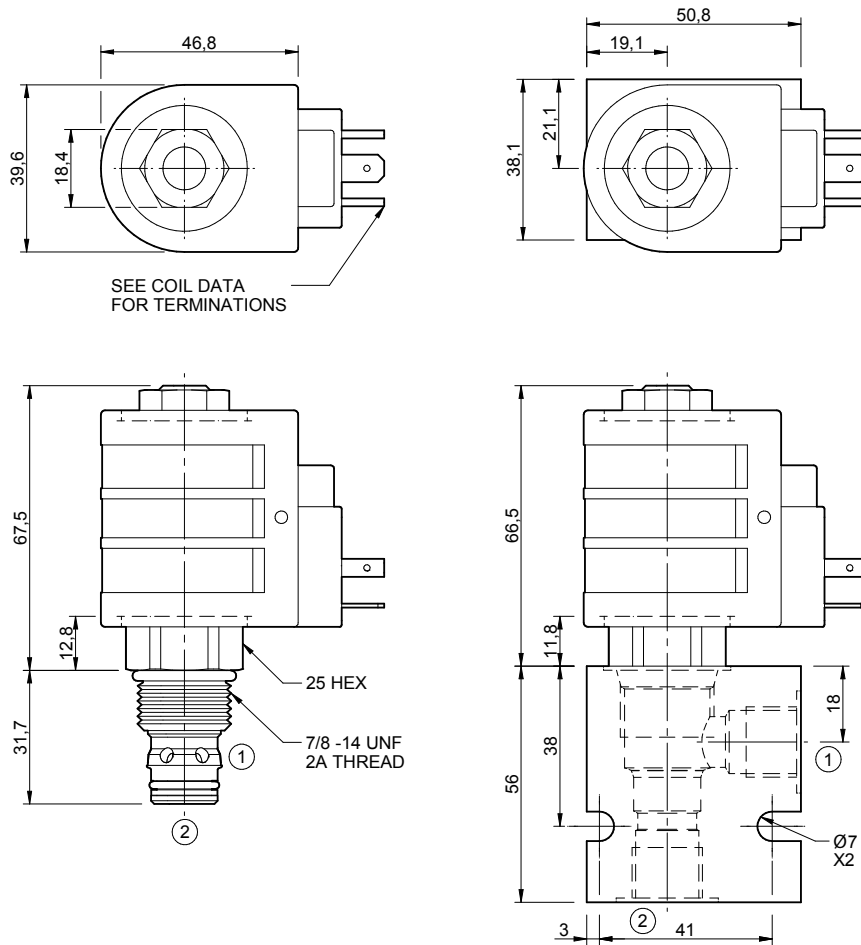
Specifications

| | |
|----------------------------------|--|
| Nom. Flow (lpm) | 57 |
| Max. pressure (bar) | 275 |
| Internal Leakage (32 cSt) | 0 to 0.25 cc/min |
| Hydraulic oil | General purpose hydraulic fluid |
| Viscosity Range | 3 to 640 cSt |
| Filtration | ISO 18/16/13 |
| Operating temp. | -40 to 120°C |
| Voltage | DC / AC (see coil data page Coil-L) |
| Cartridge Torque | 68 Nm |
| Coil Nut Torque | 5 to 8 Nm |
| Cavity | DE10-2 (see cavity data page CAV-DE10-2) |
| Spare Seal Kit (Viton) | SK-DDEVHA |
| Weight - Cartridge only | 0.17 kg |
| Weight - Cartridge + Coil | 0.48 kg |
| Weight - Cartridge + Coil + Body | 0.71 kg (alum) 1.13 kg (steel) |

Energisation Chart

| Solenoid | Flow Direction | |
|--------------|----------------|-----------|
| | 1 → 2 | 2 → 1 |
| De-energised | Load holding | Free flow |
| Energised | Free flow | Free flow |

Dimensions
[mm]



Coils can be fitted in any orientation.
Refer to data sheet Coil-L for coil options.

D-HES2B

| | | | | | | |
|----------------|--|-------------------------------------|------------------------------------|------------------------------------|----------------------|---|
| | ** | ** | ** | * | * | * |
| Options | Coil termination | Voltage | Port size (BSP) | No. of ports | Body material | |
| 00 - Nitrile | DL - Double lead | 06 - 06 Vdc | B - 3/8" | 2 - 2 ports | A - Aluminium | |
| V0 - Viton | DT - Deutsch on Leads DT04-2P | 12 - 12 Vdc | C - 1/2" | Options - See page B-DDE | S - Steel | |
| | ML - Metric-Pack on Leads | 24 - 24 Vdc | Options - See page B-DDE | | | |
| | PL - Packard on Leads | 36 - 36 Vdc | | | | |
| | WL - Weatherpack on Leads | 48 - 48 Vdc | | | | |
| | SS - Single spade | 25 - 24 Vac | | | | |
| | DS - Double spade | 11 - 120 Vac | | | | |
| | HC - EN 175301-803* (AC&DC) | 22 - 220 Vac | | | | |
| | CL - Conduit Lead - (AC Only) | 44 - 440 Vac | | | | |
| | DI - Deutsch | Options - See page Coil-L | | | | |
| | 'I' coils (12 & 24 volts only) weather/immersion proof (IP69) | | | | | |
| | IA - AMP superseal | | | | | |
| | ID - Deutsch | | | | | |
| | IJ - AMP Jr. Timer | | | | | |
| | IM - Metripak | | | | | |
| | Options - See page Coil-L | | | | | |
| | Omit if coil is not required | | | | | |

*Formerly DIN 43650 Hirschmann connector.