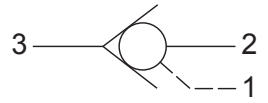




Up to 240 bar - 38 lpm

Symbol

Operation

The D-DFCPD allows free flow from (3) to (2), and blocks flow from (2) to (3). Flow will be blocked from (3) to (2) when sufficient pressure is applied at (1).

The cartridge has various "pilot ratios" (see options).

Example: 1/4 for 4:1 of the load pressure held at (3) is required at (1) to close the valve.

The check is spring biased to assure holding in static or no-load conditions.

Features

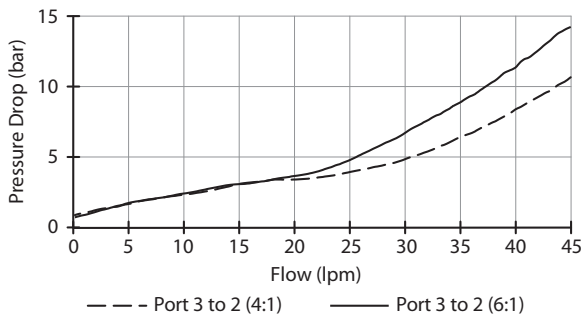
- Hardened parts for long life.
- Industry common cavity.



Special higher bias spring values available. Consult factory.

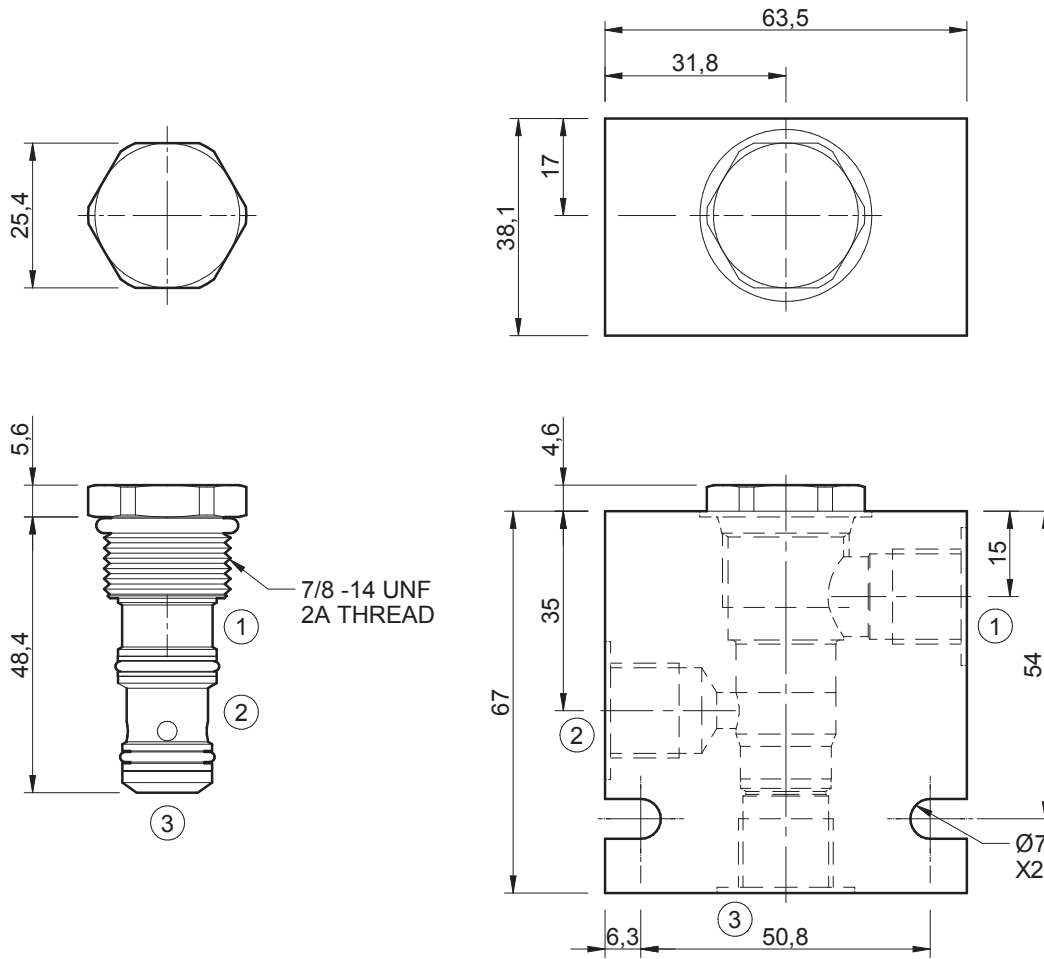
Performance

32 cSc / 38°C.


Specifications

Nom. Flow (lpm)	38
Max. Pressure (bar)	240
Pilot Ratio	Option 4:1 or 6:1
Internal Leakage (32 cSt)	2.5 cc/min from (2) to (3) 0.25cc/min from (3) to (2) when port (1) is piloted
Hydraulic Oil	General purpose hydraulic fluid
Viscosity Range	3 to 640 cSt
Filtration	ISO 18/16/13
Operating Temp.	-40 to 120°C
Cartridge Torque	41 Nm
Cavity	DF10-3 (see cavity data page CAV-DF10-3)
Spare Seal Kit (Viton)	SK-DDFVHDA
Weight - Valve only	0.09 kg
Weight - Valve + Body	0.45 kg (alum) 1.12 kg (steel)

Dimensions
[mm]



Ordering Code

