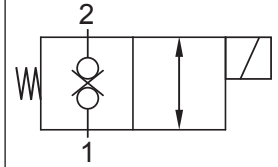




Up to 250 bar - 15 lpm

**Symbol**



**Operation**

When de-energised the T-PBS2I blocks flow from (1) to (2) and from (2) to (1). When energised the valve allows flow from (1) to (2) and from (2) to (1).

**Manual override options available.**

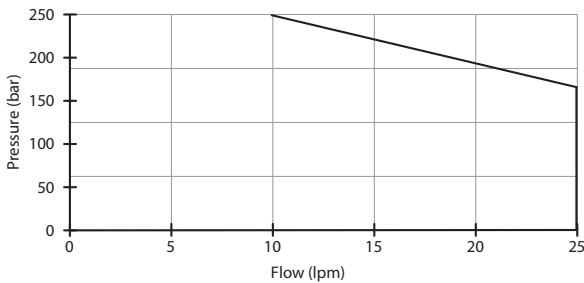
**Features**

- Hardened parts for long life.
- Efficient wet-armature construction.
- Cartridges are voltage interchangeable.
- Manual override options.
- Industry common cavity.
- 720 hours salt spray protection.
- Unitised, molded coil design.
- Continuous duty rated solenoid.
- Optional coil voltages and terminations.
- Optional "I" Coil: Weatherproof, Thermal, Shock, Immersion Safe.

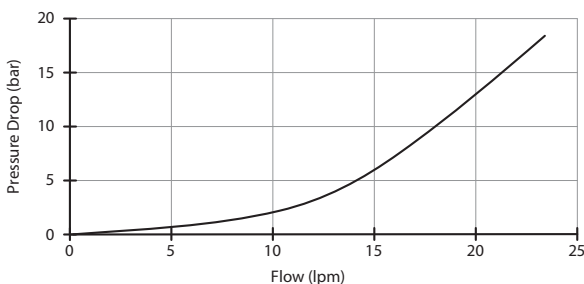
**Performance**

32 cSt / 38°C.

Pressure vs. Flow Limits.



— Port 1 to 2 (eng)



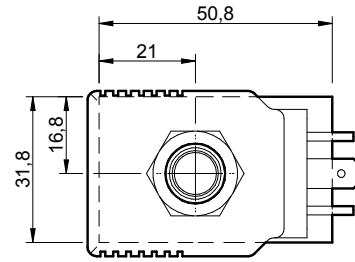
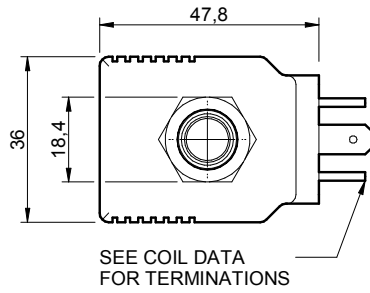
— Port 2 to 1 (eng)

**Specifications**

Nom. Flow (lpm)	15 (see graph)
Max. pressure (bar)	250 (see graph)
Internal Leakage (32 cSt)	0 to 0.50 cc/min at 250 bar
Hydraulic oil	General purpose hydraulic oil
Viscosity Range	3 to 640 cSt
Filtration	ISO 18/16/13
Operating temp.	-20 to 120°C
Voltage	DC / AC (see coil data page <b>Coil-P</b> )
Cartridge Torque	34 Nm
Coil Nut Torque	5 to 8 Nm (max.)
Cavity	PB08-2 (see cavity data page <b>CAV-PB08-2</b> )
Spare Seal Kit (Viton)	SK-DPBVHD
Weight - Cartridge only	0.13 kg
Weight - Cartridge + Coil	0.48kg
Weight - Cartridge + Coil + Body	0.66 kg (alum) 0.99 kg (steel)

**Dimensions**

[mm]



SEE COIL DATA FOR TERMINATIONS

**To Override**

**Screw Override**

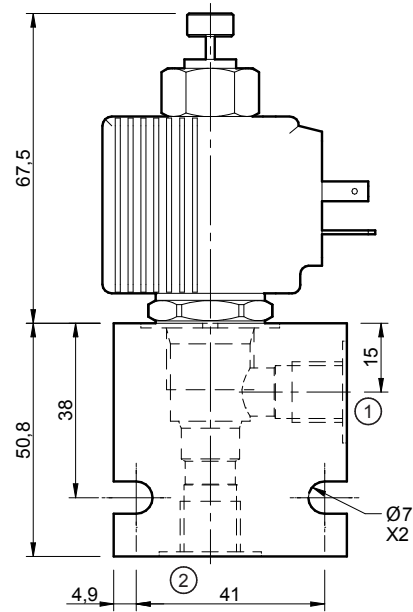
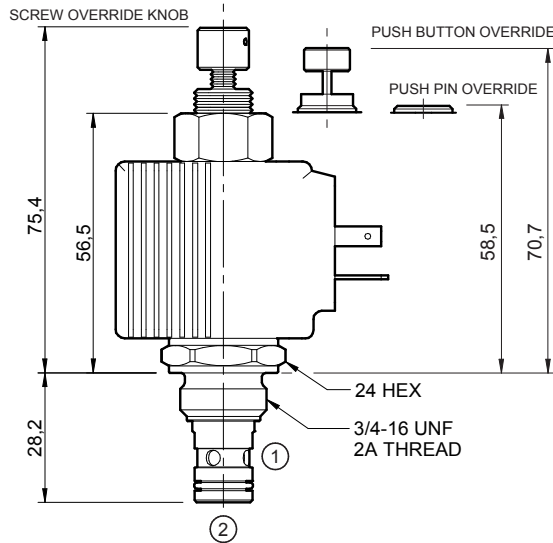
Screw clockwise to open.

**Push Button Override**

Push to override.

**Push Pin Override**

Push to override.



Coil shown is JH (standard option).

**Ordering Code**

**T-PBS2I**

	**	**	**	*	*	*
<b>Options</b>	<b>Coil Termination</b>	<b>DC Voltage</b>	<b>Port size (BSP)</b>	<b>No. of ports</b>	<b>Body material</b>	
00 - Nitrile	JL - Double lead (1)	12 - 12 Vdc	A - 1/4"	2 - 2 ports	A - Aluminium	
V0 - Viton	JH - EN 175301-803* (1)	24 - 24 Vdc	B - 3/8"	<b>Options -</b> See page B-DPB	S - Steel	
0P - Nitrile, push pin overr.	JD - Deutsch (1)		<b>Options -</b> See page B-DPB		<b>For pressures over 210 bar use steel.</b>	
VP - Viton, push pin overr.	DS - Double Spade (2)					
0B - Nitrile, push button overr.		<b>AC Voltage</b>				
VB - Viton, push button overr.	HC - EN 175301-803* (2)	25 - 24 Vac				
0K - Nitrile, screw overr.		11 - 110 Vac				
VK - Viton, screw overr.	<b>Compatible Coils</b>	23 - 250 Vac				
	J, K, P & PI (immersion proof)					
	For details & options see coil datasheets					

(1) - J Coil.  
(2) - P Coil.

\*Formerly DIN 43650 Hirschmann connector.