



Up to 245 bar - Flow options up to 15/30/45 lpm

This is an electro-proportional 2-way, normally closed poppet type flow control valve used for blocking or load holding applications.

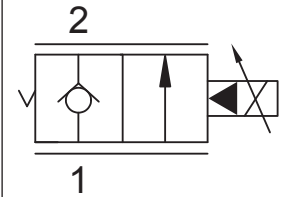
#### Operation

When de-energised the T-EEP2A blocks flow from (1) to (2) and allows reverse flow from(2) to (1).

When energised, the valve allows flow from (1) to (2). Flow is proportional to current applied to the coil.

A compensator must be used to create a pressure compensated flow control function. **Manual override options available.**

#### Symbol



#### Features

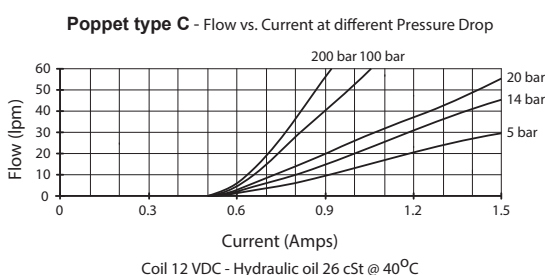
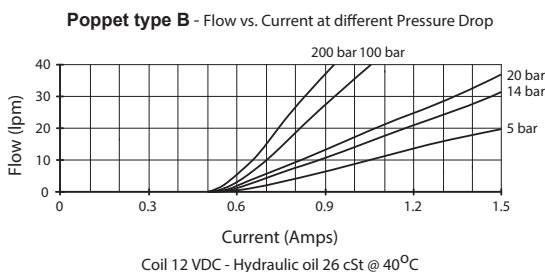
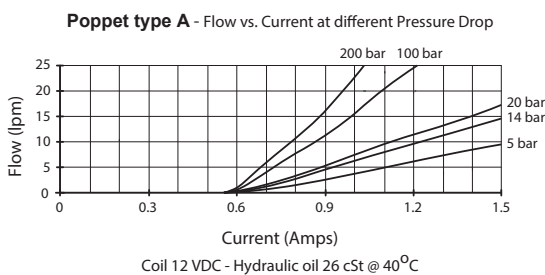
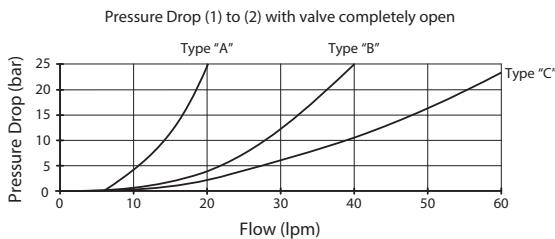
- Efficient wet-armature construction.
- Cartridges are voltage interchangeable.
- Manual override options.
- Industry common cavity.
- Unitised, molded coil design.
- Continuous duty rated solenoid.
- Optional coil voltages and terminations.



*Curves are attained without pressure compensator.*

*The valve can work with a pressure drop up to 200 bar.*

#### Performance.



#### Valve Specifications

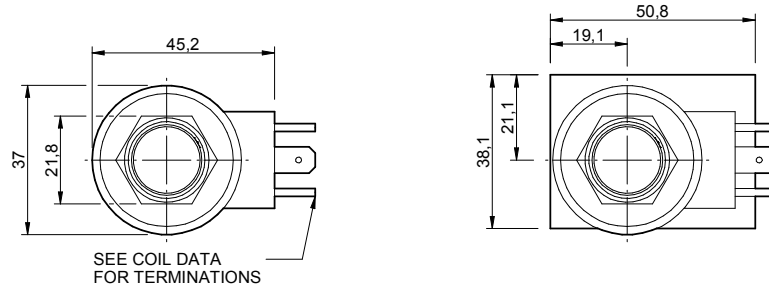
Flow Range (lpm)	see curves for various versions
Max. Pressure (bar)	245
Leakage	0 - 0.50 cc/min at 245 bar
Hysteresis	+/- 3%
Hydraulic Oil	General purpose hydraulic fluid
Viscosity Range	3 to 640 cSt
Filtration	ISO 18/16/13
Operating Temp.	-40 to 120°C
Cartridge Torque	50 Nm
Coil Nut Torque	3 - 4 Nm
Cavity	DE10-2 (see cavity data page <b>CAV-DE10-2</b> )
Spare Seal Kit (Viton)	SK-DDEVHA
Weight - Valve only	0.32 kg
Weight - Valve + Body	0.90 kg (alum) 1.98 kg (steel)

#### Coil Specifications

Current Supply	PWM (Pulse Width Modulation)
Rated Current Range	500 - 1450 mA
PWM or Super-imposed Dither Frequency	100 Hz
Coil Resistance	7.2 Ohm +/- 5% at 20°C

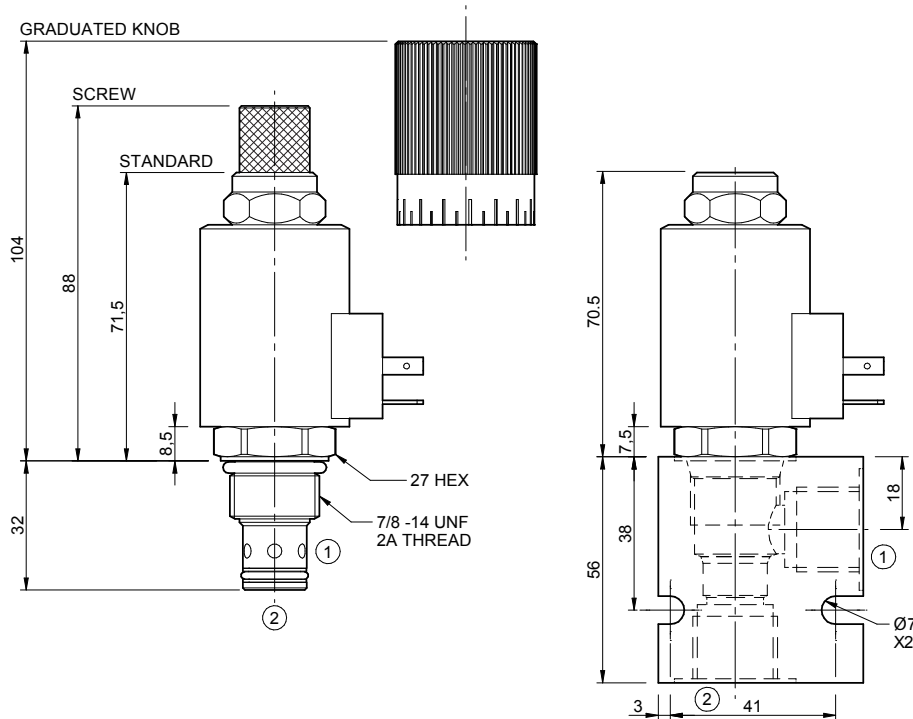
**Dimensions**

[mm]



**To Override**

Screw clockwise to close.



**Ordering Code**

**T-EEP2A**

	**	**	**	*	*	*
<b>Options</b>	<b>Coil termination</b>	<b>Voltage</b>	<b>Port size (BSP)</b>	<b>No. of ports</b>	<b>Body material</b>	
<b>Up to 15 lpm</b>	DL - Double lead	12 - 12 Vdc	B - 3/8"	2 - 2 ports	A - Aluminium	
A0 - Nitrile standard	DI - Deutsch - Integral DT04-2P	24 - 24 Vdc	C - 1/2"	<b>Options -</b> See page B-DDE	S - Steel	
AS - Nitrile, screw overr.	HC - EN 175301-803*	<b>Options -</b> See page Coil-F	<b>Options -</b> See page B-DDE		<b>For pressures over 210 bar use steel.</b>	
AK - Nitrile, grad. screw overr.	<b>Options -</b> See page Coil-F					
<b>Up to 30 lpm</b>	Omit if coil is not required					
B0 - Nitrile standard						
BS - Nitrile, screw overr.						
BK - Nitrile, grad. screw overr.						
<b>Up to 45 lpm</b>						
C0 - Nitrile standard.						
CS - Nitrile, screw overr.						
CK - Nitrile, grad. screw overr.						

**Notes:**

1) For other seals, consult factory.

\*Formerly DIN 43650 Hirschmann connector.