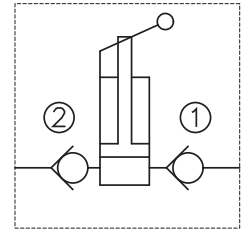


Up to 280 bar - 8.8 cm³/stroke

Operation

The K-DEHPD hand pump when pipe handle is lifted, primes thru port (2) and when pushed provides flow pressure to outlet port (1).

Symbol

Features

- Industry common cavity.
- Large displacement per stroke.



This product is not intended as a load holding device.

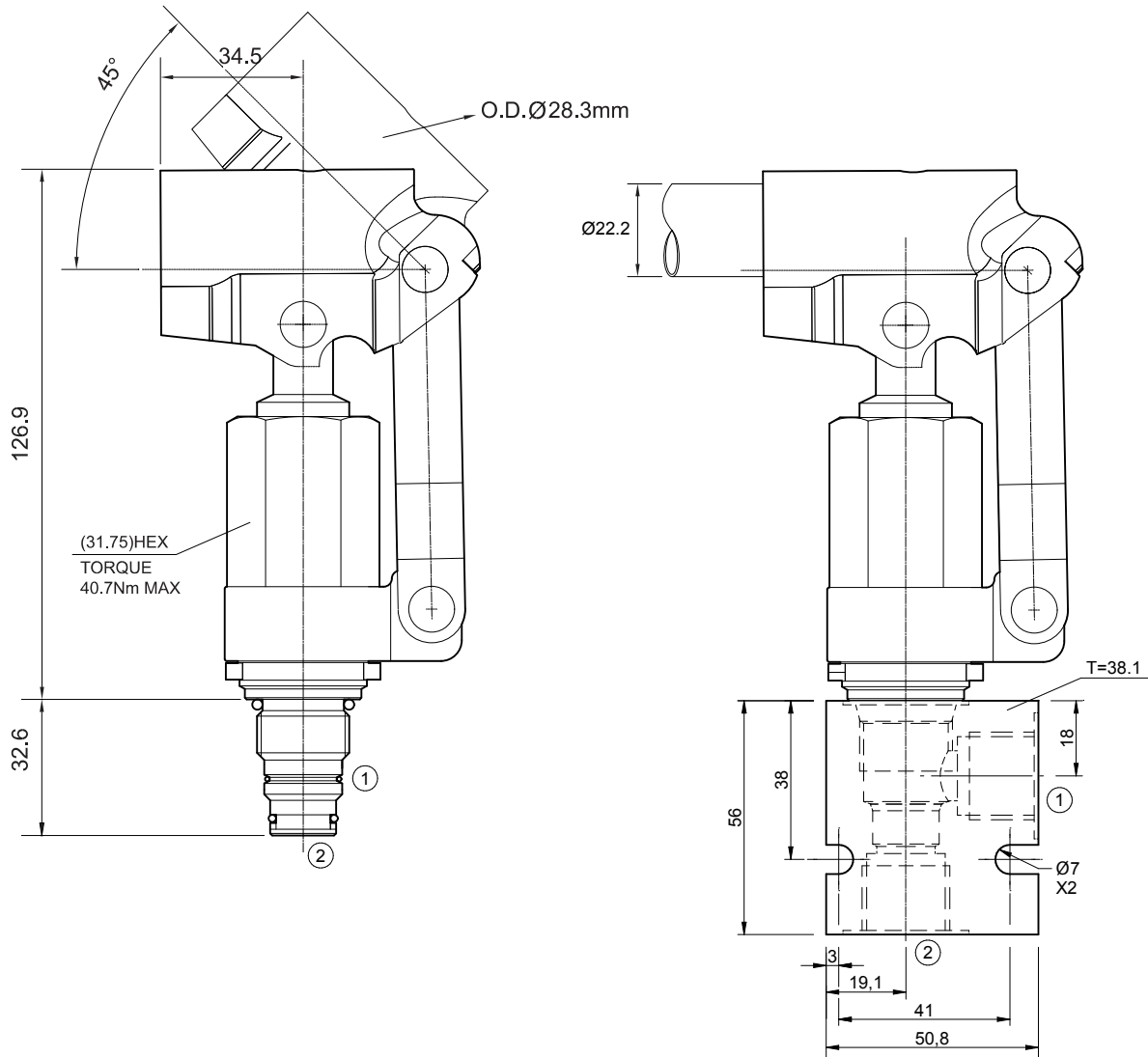
Linkage is not to be removed. Handle options available.

Specifications

Nom. Flow	K-DEHPD4	K-DEHPD8
	4.0 cm ³ /stroke	8.8 cm ³ /stroke
Max. Pressure (bar)	280	210
Internal Leakage (32 cSt)	0.1 cc/min	
Hydraulic Oil	General purpose hydraulic fluid	
Viscosity Range	3 to 640 cSt	
Filtration	ISO 18/16/12	
Operating Temp.	-30 to 120°C	
Cartridge Torque	41 Nm	
Cavity	DE10-2 (see cavity data page CAV-DE10-2)	
Spare Seal Kit (Viton)	SK-DDEVHA	
Weight - Valve only	0.69 kg	
Weight - Valve + Body	0.92 kg (alum) 1.34 kg (steel)	

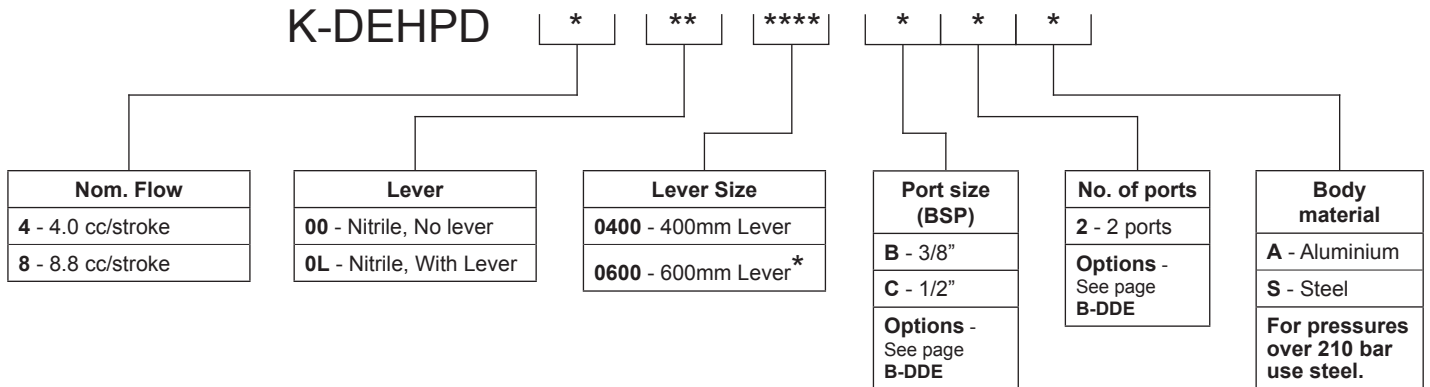
Dimensions

[mm]



Ordering Code

K-DEHPD



Lever Part No.
PT-LEV009 - 400mm
PT-LEV012 - 600mm

* Required for pressures over 240 bar (K-DEHPD4)