



Up to 245 bar - Flow options up to 65/85/110 lpm

This is an electro-proportional 2-way, normally closed poppet type flow control valve used for blocking or load holding applications.

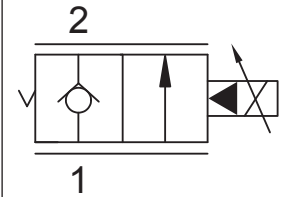
Operation

When de-energised the T-ETP2A blocks flow from (1) to (2) and allows reverse flow from (2) to (1).

When energised, the valve allows flow from (1) to (2). Flow is proportional to current applied to the coil. A compensator must be used to create a pressure compensated flow control function.

Manual override options available.

Symbol



Features

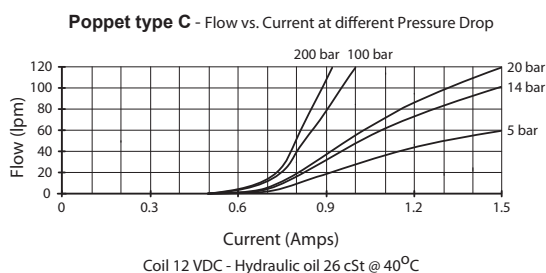
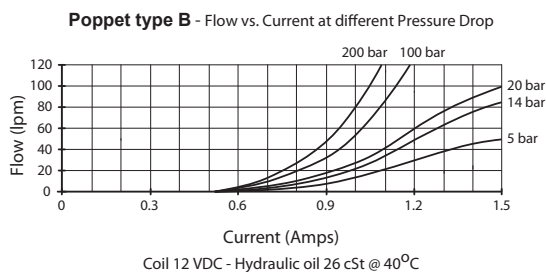
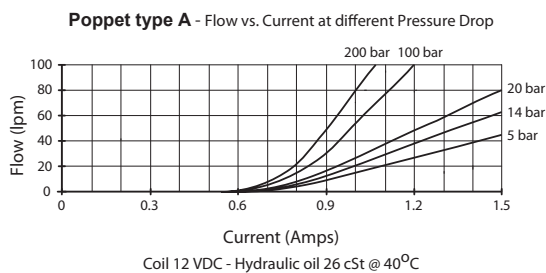
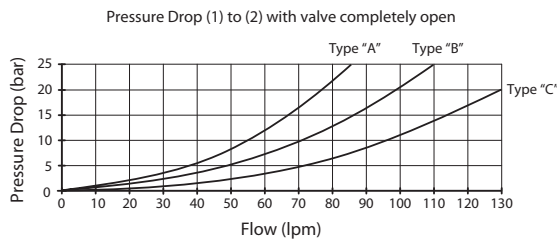
- Efficient wet-armature construction.
- Cartridges are voltage interchangeable.
- Manual override options.
- Industry common cavity.
- Unitised, molded coil design.
- Continuous duty rated solenoid.
- Optional coil voltages and terminations.



Curves are attained without pressure compensator.

The valve can work with a pressure drop up to 200 bar.

Performance.



Valve Specifications

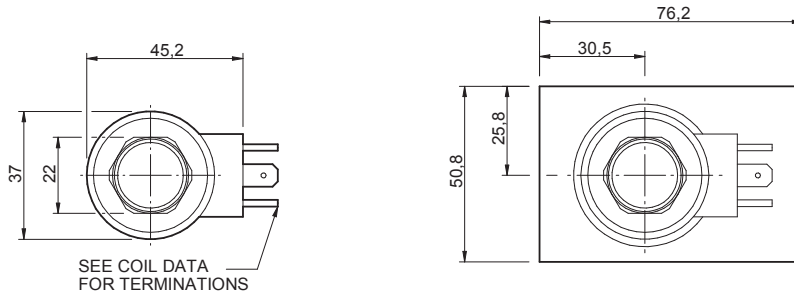
Flow Range (lpm)	see curves for various versions
Max. Pressure (bar)	245
Leakage	0 - 0.50 cc/min at 245 bar
Hysteresis	+/- 3%
Hydraulic Oil	General purpose hydraulic fluid
Viscosity Range	3 to 640 cSt
Filtration	ISO 18/16/13
Operating Temp.	-40 to 120 °C
Cartridge Torque	50 Nm
Coil Nut Torque	3 - 4 Nm
Cavity	TT12-2 (see cavity data page CAV-TT12-2)
Spare Seal Kit (Viton)	SK-DTTVHD
Weight - Valve only	0.32 kg
Weight - Valve + Body	0.90 kg (alum) 1.98 kg (steel)

Coil Specifications

Current Supply	PWM (Pulse Width Modulation)
Rated Current Range	500 - 1450 mA
PWM or Super-imposed Dither Frequency	100 Hz
Coil Resistance	7.2 Ohm +/- 5% at 20°C

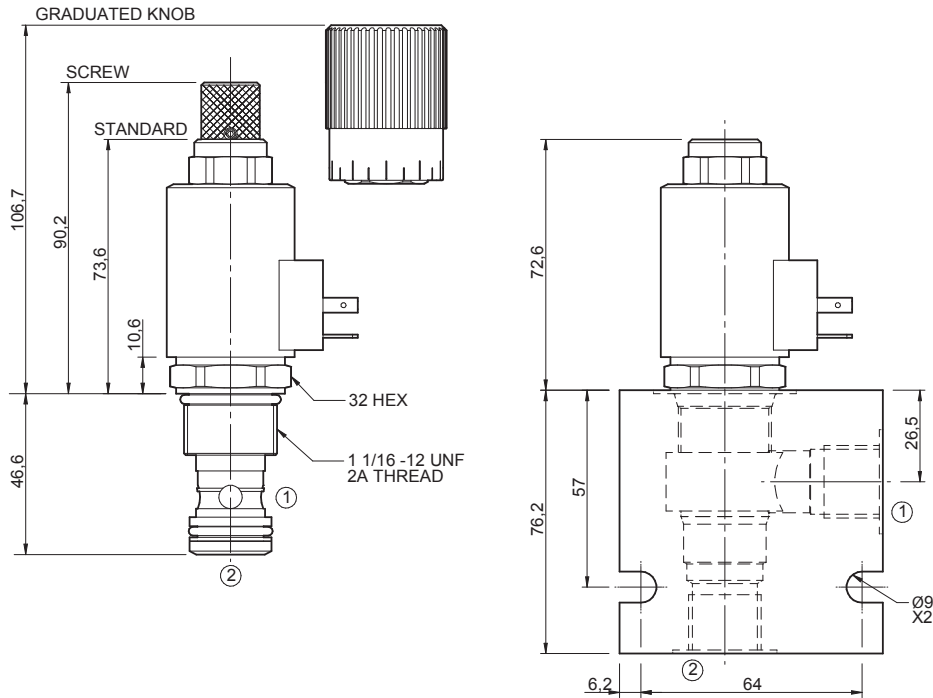
Dimensions

[mm]



To Override

Screw clockwise to close.



Ordering Code

T-ETP2A

Options	Coil termination	Voltage	Port size (BSP)	No. of ports	Body material
Up to 65 lpm	DL - Double lead	12 - 12 Vdc	C - 1/2"	2 - 2 ports	A - Aluminium
A0 - Nitrile standard	DI - Deutsch - Integral DT04-2P	24 - 24 Vdc	D - 3/4"	Options - See page B-DTT	S - Steel
AS - Nitrile, screw overr.	HC - EN 175301-803*	Options - See page Coil-F	Options - See page B-DTT		For pressures over 210 bar use steel.
AK - Nitrile, grad. screw overr.	Options - See page Coil-F				
Up to 85 lpm	Omit if coil is not required				
B0 - Nitrile standard					
BS - Nitrile, screw overr.					
BK - Nitrile, grad. screw overr.					
Up to 110 lpm					
C0 - Nitrile standard.					
CS - Nitrile, screw overr.					
CK - Nitrile, grad. screw overr.					

Notes:

1) For other seals, consult factory.

*Formerly DIN 43650 Hirschmann connector.