



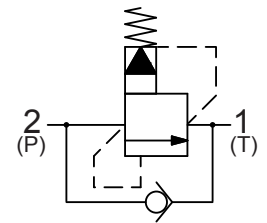
Up to 275 bar - 57 lpm

This is a pilot operated spool type relief valve, typically used to provide system relief protection. This valve also has a reverse free flow function (e.g. for anti-cavitation purposes). It is ideal for continuous duty and accurate stable pressure control with constant or varying flows.

**Operation**

The D-DERVR blocks flow from (2) to (1) until sufficient pressure is present at (2) to force the pilot stage open, allowing the main stage to shift, opening (2) to (1). The relief flow path is from (2) to (1). Free reverse flow, from (1) to (2), occurs when the pressure at (1) is at least 0.7 bar higher than at port (2).

**Symbol**



**Adjustment**

Turn  to increase pressure.

**Features**

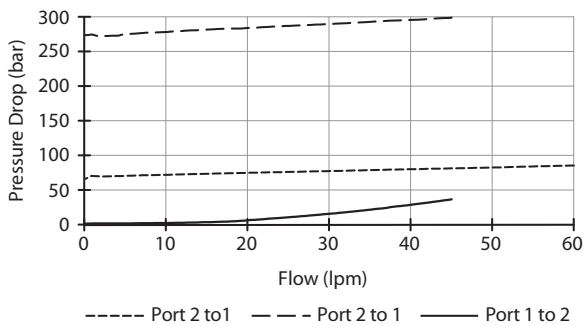
- Hardened parts for long life.
- Industry common cavity.



Consult Performance chart for flow capacity port 1 to 2

**Performance**

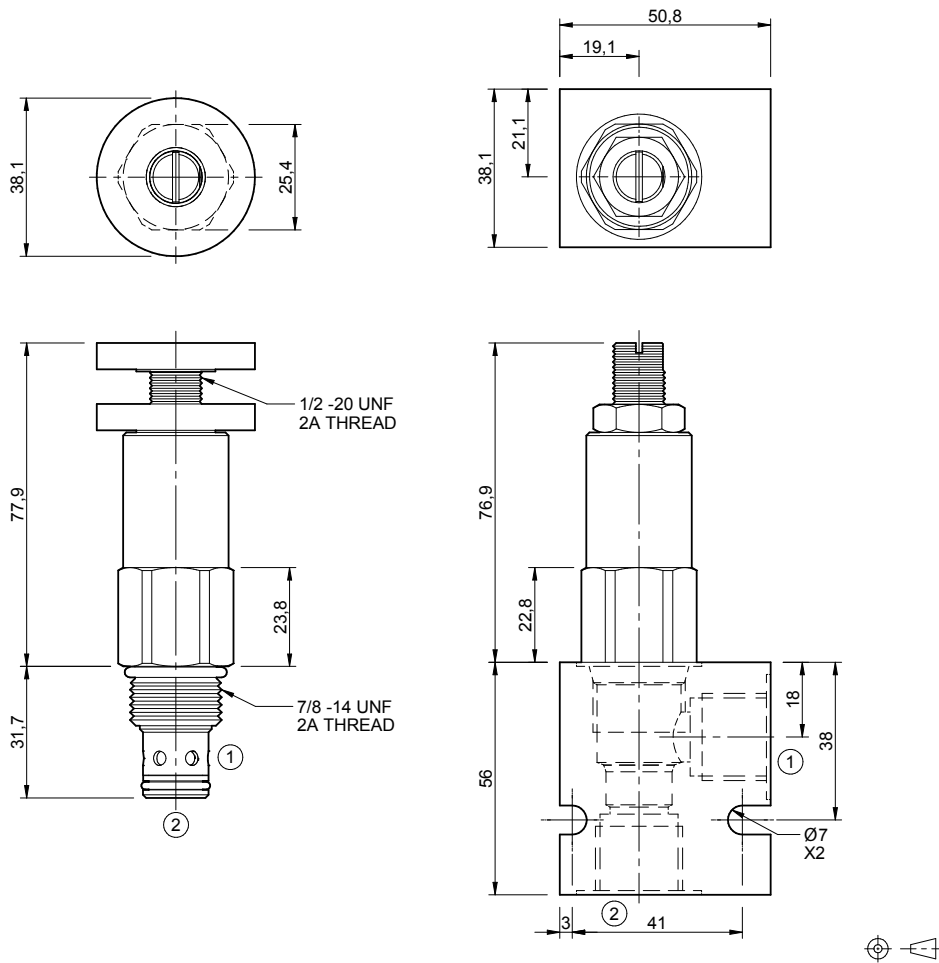
32 cSc / 38°C.



**Specifications**

Nom. Flow (lpm)	76
Max. Pressure (bar)	275
Hydraulic Oil	General purpose hydraulic fluid
Viscosity Range	3 to 640 cSt
Filtration	ISO 18/16/13
Operating Temp.	-40 to 120°C
Cartridge Torque	41 Nm
Cavity	DE10-2 (see cavity data page <b>CAV-DE10-2</b> )
Spare Seal Kit (Viton)	SK-DDEVHA
Weight - Valve only	0.25 kg
Weight - Valve + Body	0.48 kg (alum) 0.90 kg (steel)

**Dimensions**  
[mm]



**Ordering Code**

**D-DERVR**

