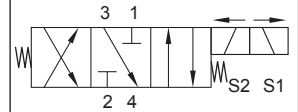


Up to 210 bar - 23 lpm

### Symbol



### Operation

This is a solenoid operated 4 way 3 position (3) to (4) centre spool valve which can be used in a parallel hydraulic circuit to give direction to a cylinder.

The connection between port (3) to (4) in the midposition allows for a pilot line on a load holding valve to relieve to tank allowing positive setting of the load holding valve.

**Manual override options available.**

### Features

- Hardened parts for long life.
- Efficient wet-armature construction.
- Cartridges are voltage interchangeable.
- Industry common cavity.
- Unitised, molded coil design.
- Continuous duty rated solenoid.
- Optional coil voltages and terminations.
- Optional "I" Coil: Weatherproof, Thermal, Shock, Immersion Safe.

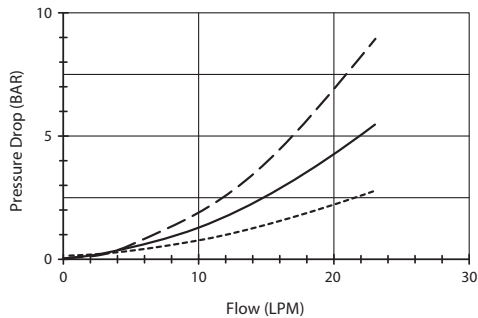


Uses "L" Coil.

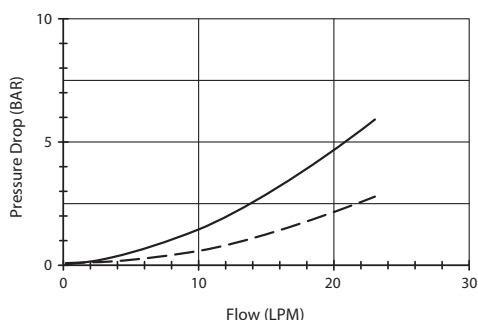
Flow rating is at 69 bar maximum differential loading.

### Performance

32 cSt/ 38°C.



--- Port 3 to 4 (de-eng)    - - - - - Port 3 to 4 (eng S1)  
 ——— Port 2 to 1 (eng S1)

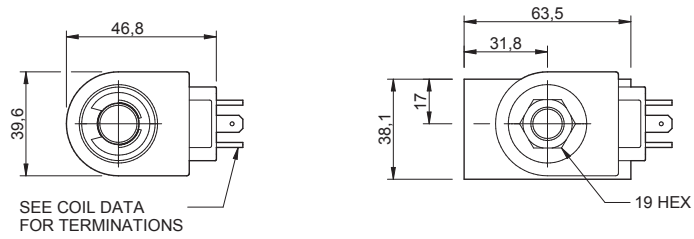


--- Port 1 to 4 (eng S2)    ——— Port 2 to 3 (eng S2)

### Specifications

Max. Flow (lpm)	23
Max. pressure (bar)	210
Internal Leakage (32 cSt)	82 cc/min per path
Hydraulic oil	General purpose hydraulic fluid
Viscosity Range	3 to 640 cSt
Filtration	ISO 18/16/13
Operating temp.	-40 to 120°C
Voltage	DC / AC (see coil data page <b>Coil-L</b> )
Cartridge Torque	41 Nm
Coil Nut Torque	5 to 8 Nm
Cavity	DG10-4 (see cavity data page <b>CAV-DG10-4</b> )
Seal Kit	SK-DDGVHDDD
Weight - Cartridge only	0.28 kg
Weight - Cartridge + Coil	0.59 kg
Weight - Cartridge + Coil + Body	1.05 kg (alum)    1.92 kg (steel)

**Dimensions**  
[mm]



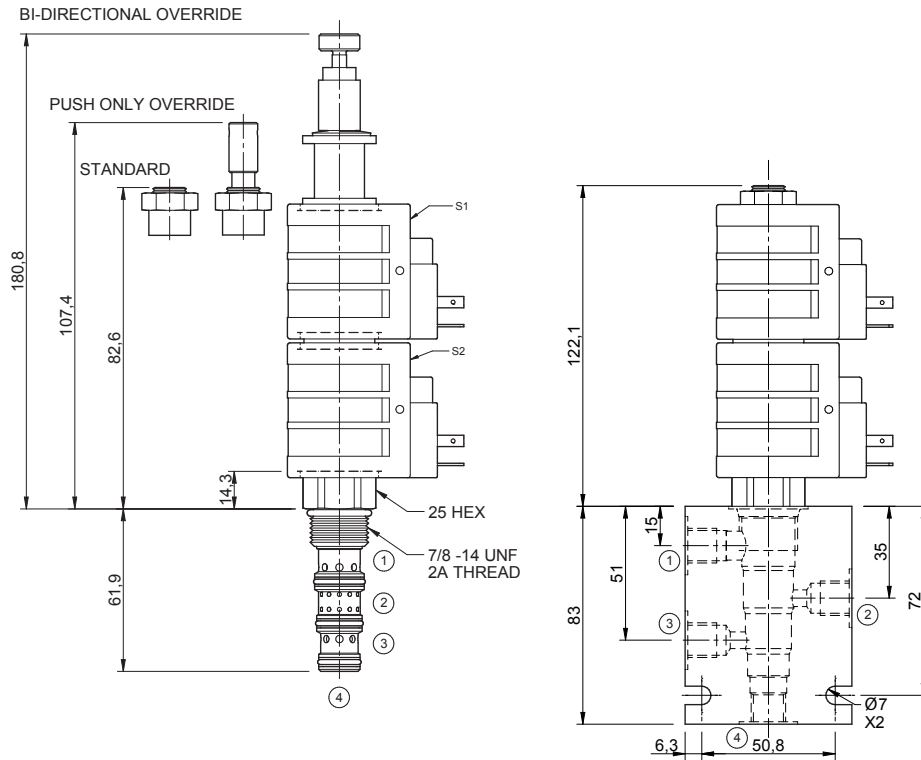
**To Override**

**Bi-Directional Override.**  
Push to shift in direction S2.  
Pull to shift in direction S1.

**Push Only Override.**  
Push to shift in direction S2.

Coils can be fitted in any orientation.

Refer to data sheet **Coil-L** for coil options.



**Ordering Code**

**D-DGS4S** — **\*\*** — **\*\*** **\*\*** — **\*** **\*** **\***

Options
<b>00</b> - Nitrile
<b>V0</b> - Viton
<b>0M</b> - Nitrile, bi-direct. override.
<b>VM</b> - Viton, bi-direct. override.
<b>0P</b> - Nitrile, push override.
<b>VP</b> - Viton, push override.

Coil termination
<b>DL</b> - Double lead
<b>DS</b> - Double spade
<b>HC</b> - EN 175301-803*
<b>Options</b> - See page <b>Coil-L</b>
Omit if coil is not required

Voltage
<b>12</b> - 12 Vdc
<b>24</b> - 24 Vdc
<b>48</b> - 48 Vdc
<b>25</b> - 24 Vac
<b>11</b> - 110 Vac
<b>23</b> - 240 Vac
<b>Options</b> - See page <b>Coil-L</b>

Port size (BSP)
<b>A</b> - 1/4"
<b>B</b> - 3/8"
<b>Options</b> - See page <b>B-DDG</b>

No. of ports
<b>4</b> - 4 ports
<b>Options</b> - See page <b>B-DDG</b>

Body material
<b>A</b> - Aluminium
<b>S</b> - Steel

\*Formerly DIN 43650 Hirschmann connector.