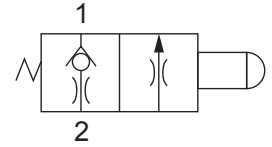


Up to 275 bar - 4 lpm

**Symbol**



This normally closed, push to open manually operated poppet valves is typically used as a low flow or pilot manual override.

**Operation**

The D-HBMCP blocks flow from (2) to (1) until an operator pushes the knob in allowing pressure at port 2 to drop to port 1 pressure.

**Features**

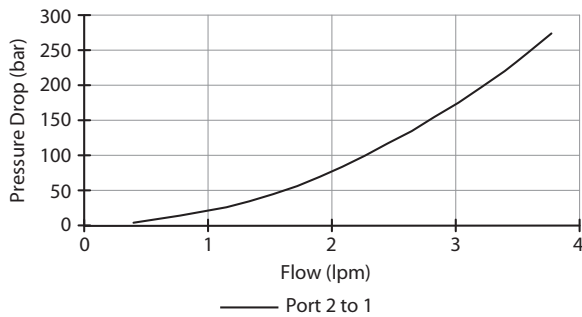
- Hardened parts for long life.
- Industry common cavity



*Good as a pilot dump valve. Port 1 should be limited to < 34 bar to allow actuation (23 kg), Port 2 actuation load at 76 bar (23 kg).*

**Performance**

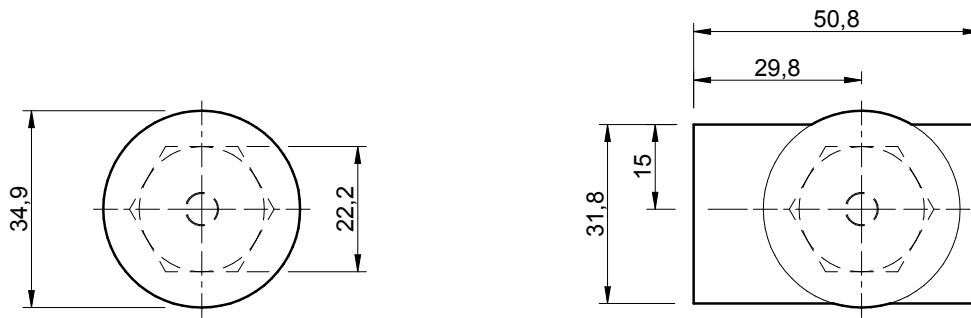
32 cSc / 38°C.



**Specifications**

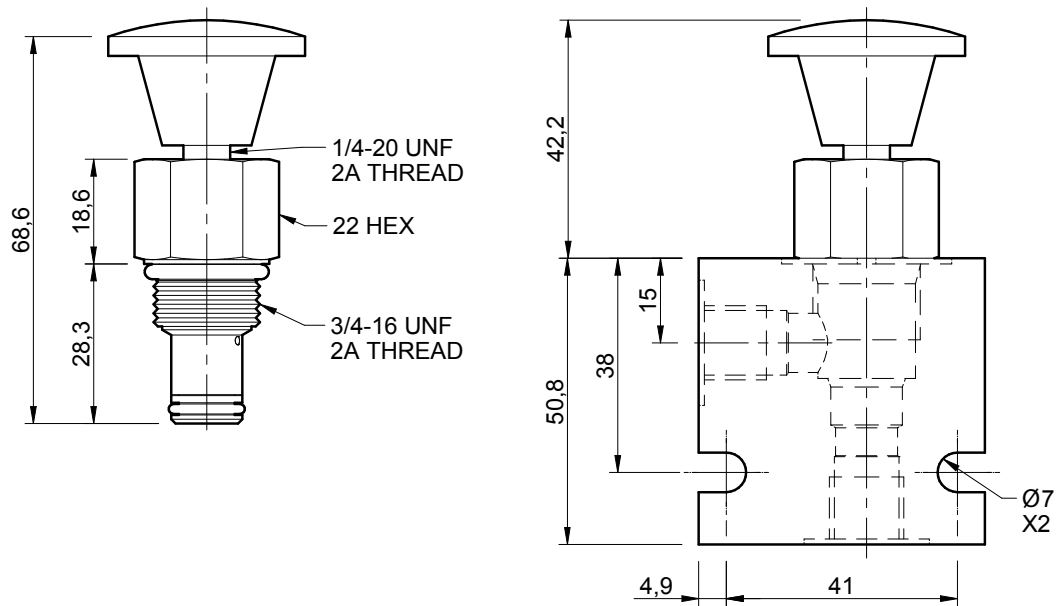
Nom. Flow (lpm)	4
Max. Pressure (bar)	275
Internal Leakage (32 cSt)	0.25 cc/min
Hydraulic Oil	General purpose hydraulic fluid
Viscosity Range	3 to 640 cSt
Filtration	ISO 18/16/13
Operating Temp.	0 to 70°C
Cartridge Torque	34 Nm
Cavity	PB08-2 (see cavity data page <b>CAV-PB08-2</b> )
Spare Seal Kit (Viton)	SK-DPBVHA
Weight - Valve only	0.06 kg
Weight - Valve + Body	0.24 kg (alum) 0.57 kg (steel)

**Dimensions**  
[mm]



**To Override**

**Push knob.**



**Ordering Code**

**D-HBMCP**

