



Up to 240 bar - 150 lpm

This is a pilot operated spool type relief valve, typically used to provide system relief protection. This valve also has a reverse free flow function (e.g. for anti-cavitation purposes). It is ideal for continuous duty and accurate stable pressure control with constant or varying flows.

Operation

The D-SJRVR blocks flow from (2) to (1) until sufficient pressure is present at (2) to force the pilot stage off its seat, allowing the main stage spool to shift, opening (2) to (1). The relief flow path is from (2) to (1). Reverse flow, from (1) to (2), occurs when the pressure at (1) is at least 2.1 bar higher than at port (2). The cartridge offers smooth transition in response to load changes in common hydraulic circuits.

Adjustment

Turn  to increase pressure.

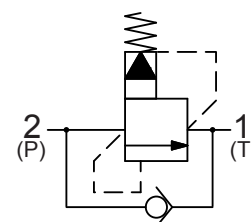
Features

- Hardened parts for long life.
- Industry common cavity.



Consult Performance chart for flow capacity port 1 to 2

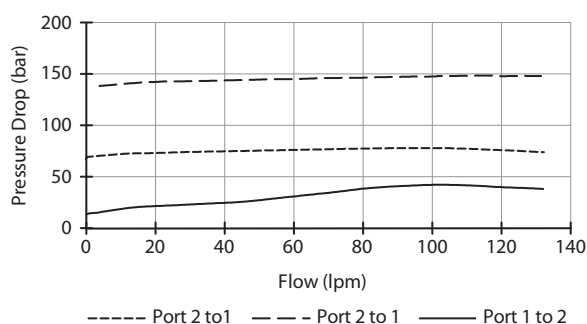
Symbol



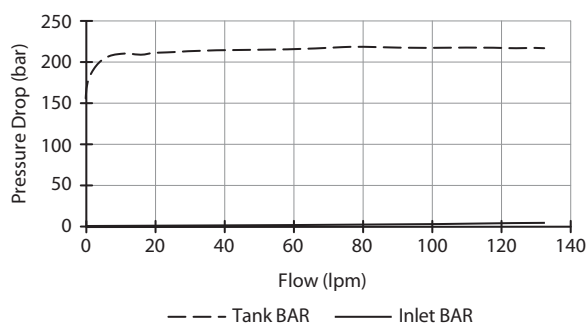
Performance

32 cSc / 38°C.

Standard Body



Standard Body

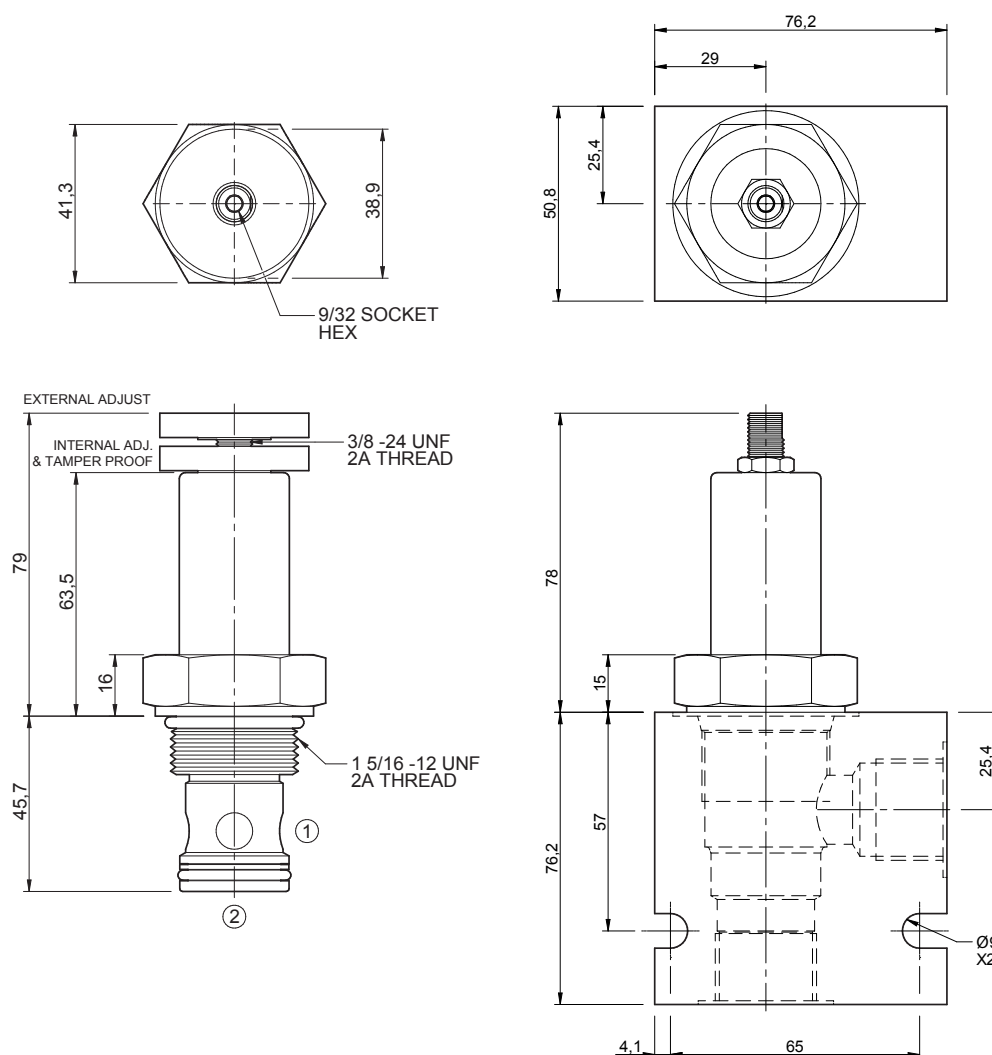


Specifications

Nom. Flow (lpm)	150
Max. Pressure (bar)	240
Hydraulic Oil	General purpose hydraulic fluid
Viscosity Range	3 to 640 cSt
Filtration	ISO 18/16/13
Operating Temp.	-40 to 120°C
Cartridge Torque	122 Nm
Cavity	SJ16-2 (see cavity data page CAV-SJ16-2)
Spare Seal Kit (Viton)	SK-DSJVHA
Weight - Valve only	0.51 kg
Weight - Valve + Body	1.08 kg (alum) 2.14 kg (steel)

Dimensions

[mm]


Ordering Code
D-SJRVR

D-SJRVR

**

*

*

*

Options
00 - Nitrile
V0 - Viton
0K - Nitrile, Knob
VK - Viton, Knob
0I - Nitrile, Internal Adj.
VI - Viton, Internal Adj.
0T - Nitrile, Tamper Proof
VT - Viton, Tamper Proof

Pressure setting
3500 - 34 to 240 bar
<i>Tamper Proof</i>
Fill in 4 digit pressure setting e.g. 034B - 34 bar

Port size (BSP)
D - 3/4"
E - 1"
Options - See page B-DSJ

No. of ports
2 - 2 ports
Options - See page B-DSJ

Body material
A - Aluminium
S - Steel
For pressures over 210 bar use steel.

Knob Part No.
PT-KN22020049