




Up to 240 bar - 150 lpm

Operation

The D-SLPCE with an external orifice in parallel with ports (3) and (1) maintains a constant flow rate across the external orifice, regardless of load pressure changes in the system upstream of (3), or in the bypass leg at (2) as long as pressure at (2) is less than (1). The valve's spool maintains a constant differential pressure across the external orifice, thereby regulating the hydraulic flow rate across the external orifice (see options table for pressure ranges).

When used with an orifice as described above, it functions as a priority type regulator, delivering pump flow first to the external orifice, then bypassing excess to (2). All ports may be fully pressurised.

Adjustment

Turn  to increase pressure.

Features

- Hardened parts for long life.
- Industry common cavity.

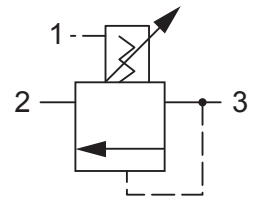
Can be used as an adjustable logic element.



Great as an adjustable pressure setting regulation device in brake, transmission & cooling systems. Because the spring chamber is separately drained, the outlet flow can be used for lower pressure functions. For fixed version see D-SLPCA-0P.

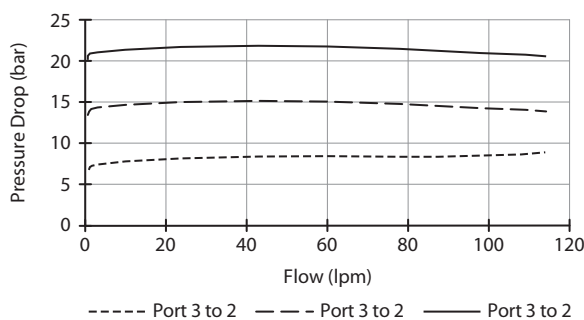
For higher spring differential pressure ranges consult factory.

Symbol



Performance

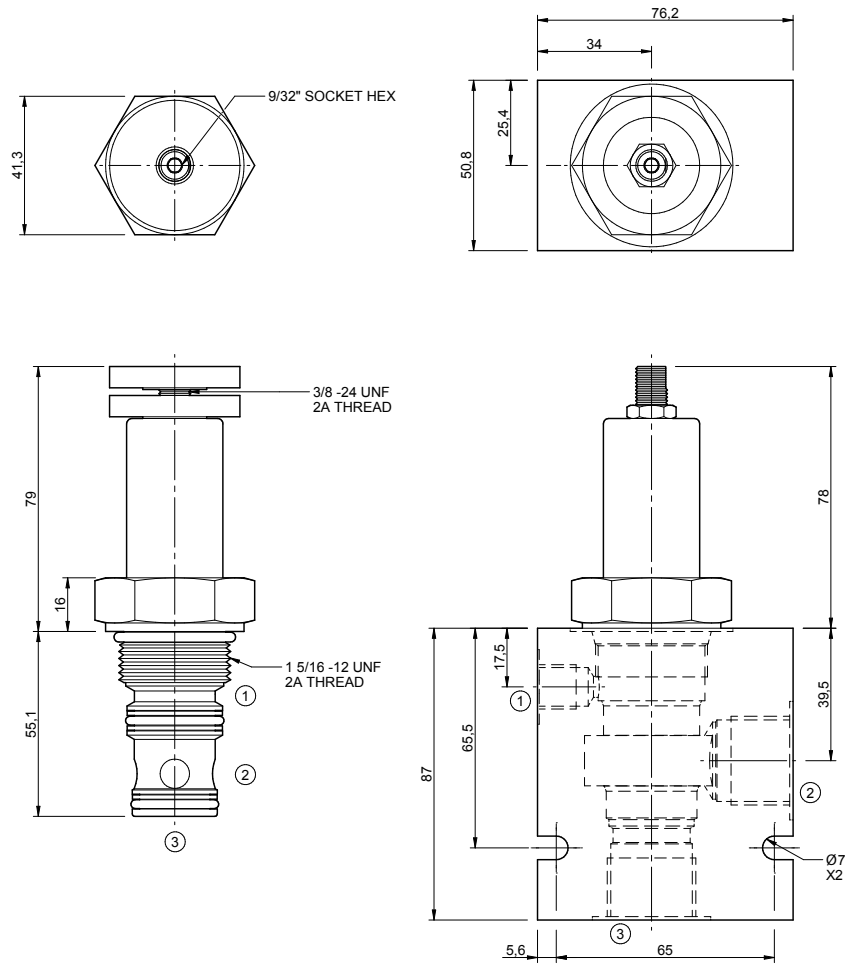
32 cSc / 38°C.



Specifications

Nom. Flow (lpm)	150
Max. Pressure (bar)	240
Hydraulic Oil	General purpose hydraulic fluid
Viscosity Range	3 to 640 cSt
Filtration	ISO 18/16/13
Operating Temp.	-40 to 120°C
Cartridge Torque	122 Nm
Cavity	SL16-3 (see cavity data page CAV-SL16-3)
Spare Seal Kit (Viton)	SK-DSL VHDE
Weight - Valve only	0.52 kg
Weight - Valve + Body	1.15 kg (alum) 2.34 kg (steel)

Dimensions
[mm]



Ordering Code

