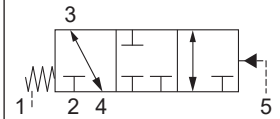




Up to 240 bar - 150 lpm

Operation

In neutral the D-SOPTT allows flow between ports (3) and (4), port (2) is blocked. With application of a remote pilot signal at (5), the valve's spool shifts to allow flow between ports (2) and (3), while port (4) is blocked. During transition all ports are closed. The spring chamber is vented to the tank through port (1). The vented spring chamber allows the valve to be fully pressurised at ports (2), (3), and (4) without affecting required pilot pressure. Pressure at (1) will affect required pilot pressure. A typical application for this valve is a high flow 3 way diverter valve using a pilot sized solenoid 3 way 2 position (eg. D-PPS3A).

Symbol

Features

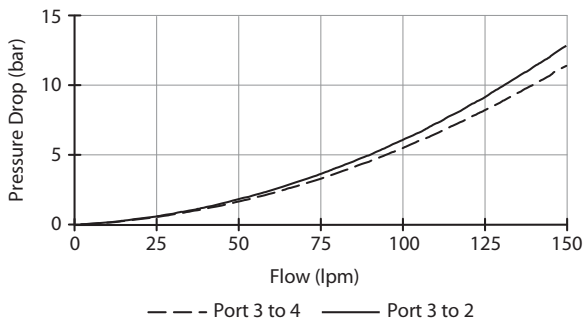
- Hardened parts for long life.
- Industry common cavity



A rate limiting orifice less than 1.5 mm diameter is recommended at port 5.

Performance

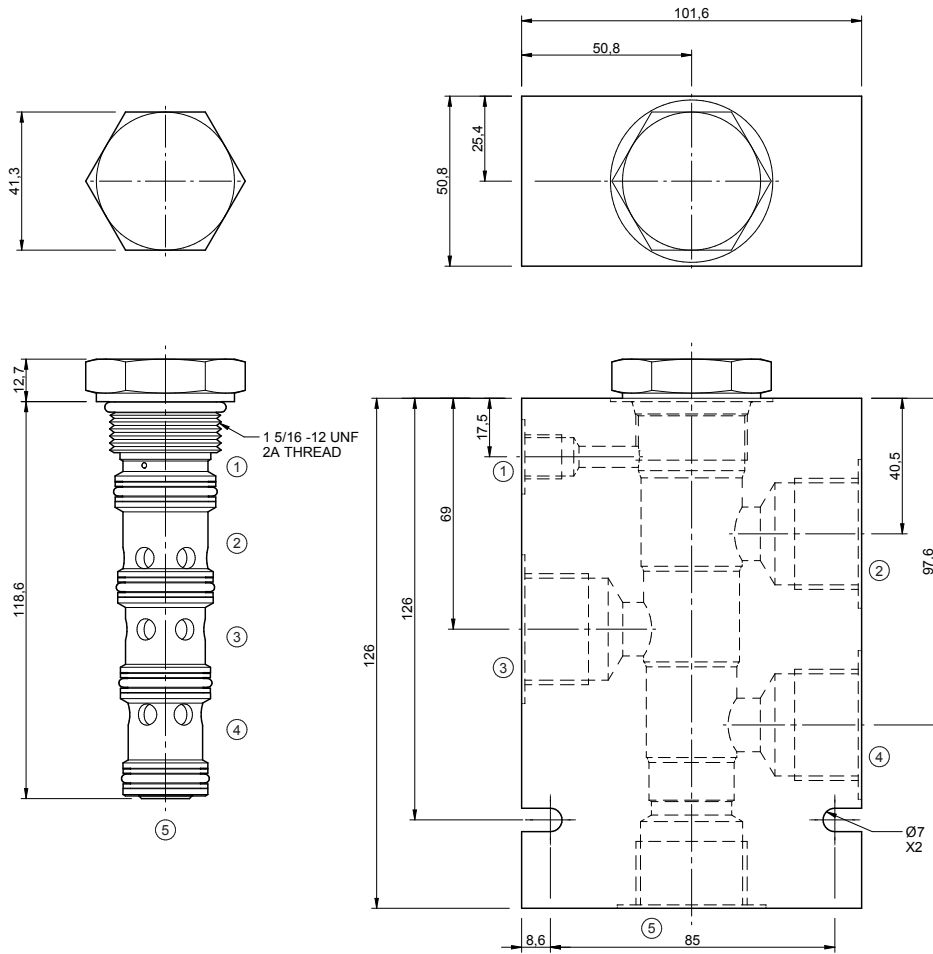
32 cSc / 38°C.


Specifications

Nom. Flow (lpm)	150
Max. Pressure (bar)	210
Internal Leakage (32 cSt)	164 cc/min
Hydraulic Oil	General purpose hydraulic fluid
Viscosity Range	3 to 640 cSt
Filtration	ISO 18/16/13
Operating Temp.	-40 to 120°C
Cartridge Torque	122 Nm
Cavity	SO16-5S (see cavity data page CAV-S016-S5)
Spare Seal Kit (Viton)	SK-DSOVHBBBB
Weight - Valve only	0.50 kg
Weight - Valve + Body	2.14 kg (alum) 5.23 kg (steel)

Dimensions

[mm]



Ordering Code

