

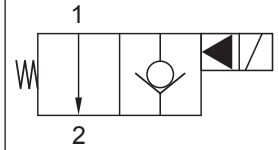
Up to 350 bar - 45 lpm


**Operation**

This is a solenoid operated 2 way normally open poppet valve. When de-energised flow goes from 1 to 2; energised, flow is blocked by a load holding poppet.

This valve is typically used as a solenoid operated dump valve. If flow is required in both directions in the de-energised position, valve S2D can be used.

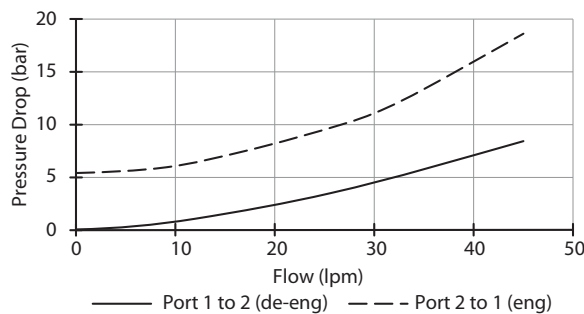
**Manual override options available.**

**Symbol**

**Features**

- Hardened parts for long life.
- Efficient wet-armature construction.
- Cartridges are voltage interchangeable.
- Manual override options.
- Industry common cavity.
- 720 hours salt spray protection.
- Unitised, molded coil design.
- Continuous duty rated solenoid.
- Optional coil voltages and terminations.
- Optional "I" Coil: Weatherproof, Thermal, Shock, Immersion Safe.

**Performance**

32 cSt / 38°C.


**Specifications**

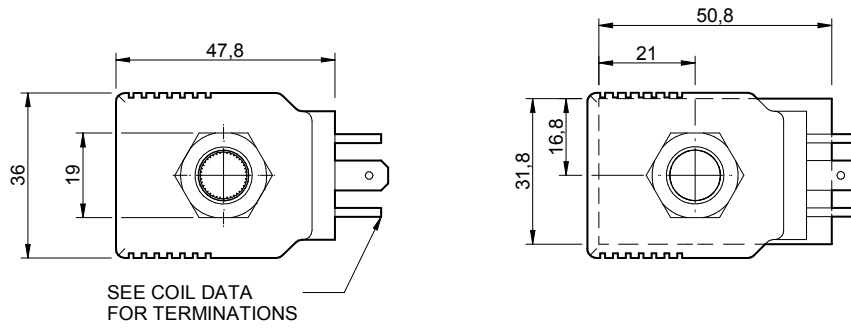
Nom. Flow (lpm)	45
Max. pressure (bar)	350
Internal Leakage (32 cSt)	0 to 0.25 cc/min at 350 bar
Hydraulic oil	General purpose hydraulic oil
Viscosity Range	3 to 640 cSt
Filtration	ISO 18/16/13
Operating temp.	-40 to 120°C
Voltage	DC / AC (see coil data page <b>Coil-P</b> )
Cartridge Torque	47 Nm
Coil Nut Torque	6 to 8 Nm (max.)
Cavity	PB08-2 (see cavity data page <b>CAV-PB08-2</b> )
Spare Seal Kit (Viton)	SK-DPBVHA
Weight - Cartridge only	0.13 kg
Weight - Cartridge + Coil	0.32 kg
Weight - Cartridge + Coil + Body	0.50 kg (alum) 0.83 kg (steel)

**Energisation Chart**

Solenoid	Flow Direction	
	1 → 2	2 → 1
De-energised	Free Flow	Restricted flow
Energised	Load holding	Free Flow

**Dimensions**

[mm]

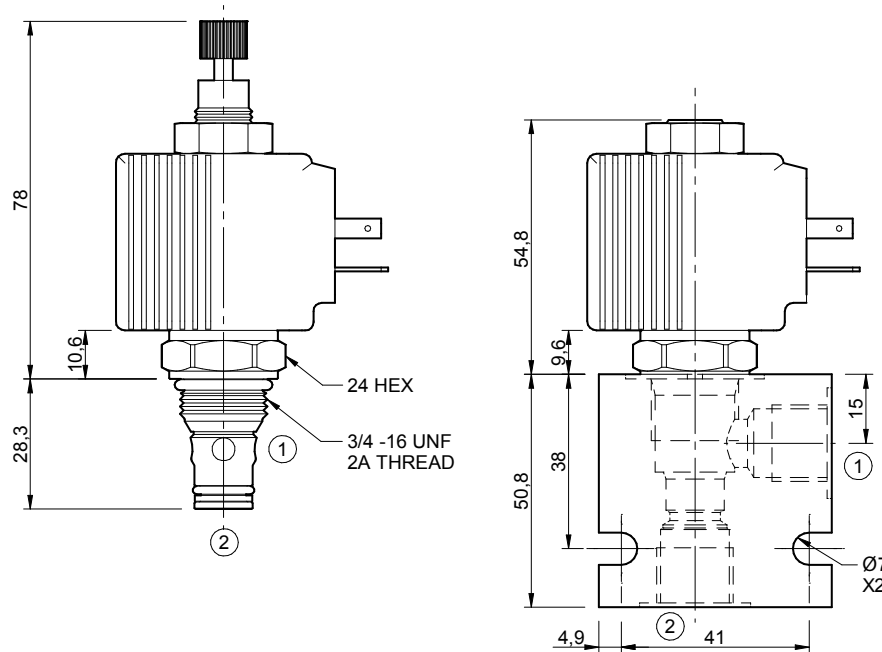


SEE COIL DATA FOR TERMINATIONS

**To Override**

Screw clockwise to close.

Coil shown is JH (standard option).



**Ordering Code**

**T-HBS2C**

	**	**	**	*	*	*
<b>Options</b>	<b>Coil Termination</b>	<b>DC Voltage</b>	<b>Port size (BSP)</b>	<b>No. of ports</b>	<b>Body material</b>	
00 - Nitrile	JL - Double lead (1)	12 - 12 Vdc	A - 1/4"	2 - 2 ports	A - Aluminium	
V0 - Viton	JH - EN 175301-803* (1)	24 - 24 Vdc	B - 3/8"	<b>Options -</b> See page B-DPB	S - Steel	
OK - Nitrile, overr., knob	JD - Deutsch (1)		<b>Options -</b> See page B-DPB			For pressures over 210 bar use steel.
VK - Viton, overr., knob	DS - Double Spade (2)					
	HC - EN 175301-803* (2)	<b>AC Voltage</b>				
	<b>Compatible Coils</b>	25 - 24 Vac				
	J, K, P & PI (immersion proof)	11 - 110 Vac				
	For details & options see coil datasheets	23 - 250 Vac				

(1) - J Coil.  
(2) - P Coil.

\*Formerly DIN 43650 Hirschmann connector.