

Up to 240 bar - Up to 150 lpm



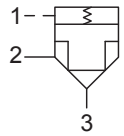
This is a logic valve typically used for basic blocking applications.

**Operation**

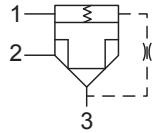
The D-SLPLB with an orifice between ports (3) and (1) maintains a constant flow rate from (3) regardless of load pressure changes in the system upstream of (3), or in the bypass leg at (2) as long as pressure at (2) is less than (1). Used for basic blocking applications.

**Symbol**

Pilot to Close



Vent to Open



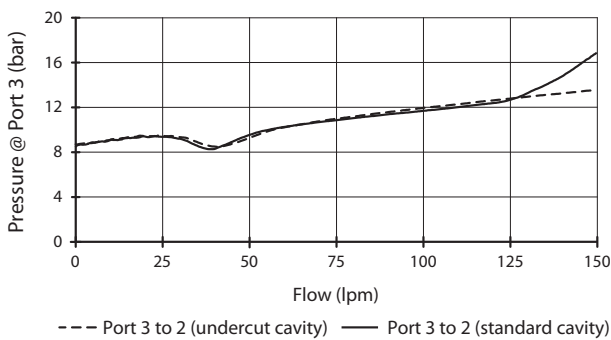
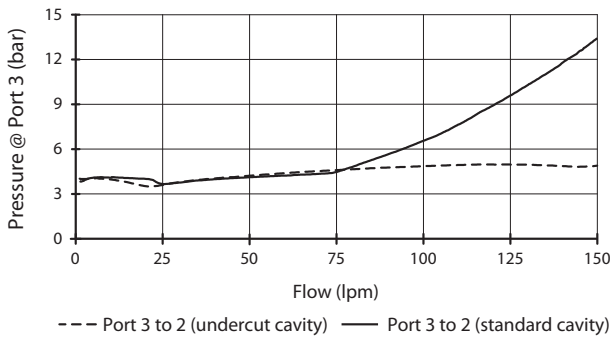
**Features**

- Hardened parts for long life
- Industry common cavity.



For bidirectional applications see D-SLPLC. For metering see D-SLPCA or D-SLPCB.

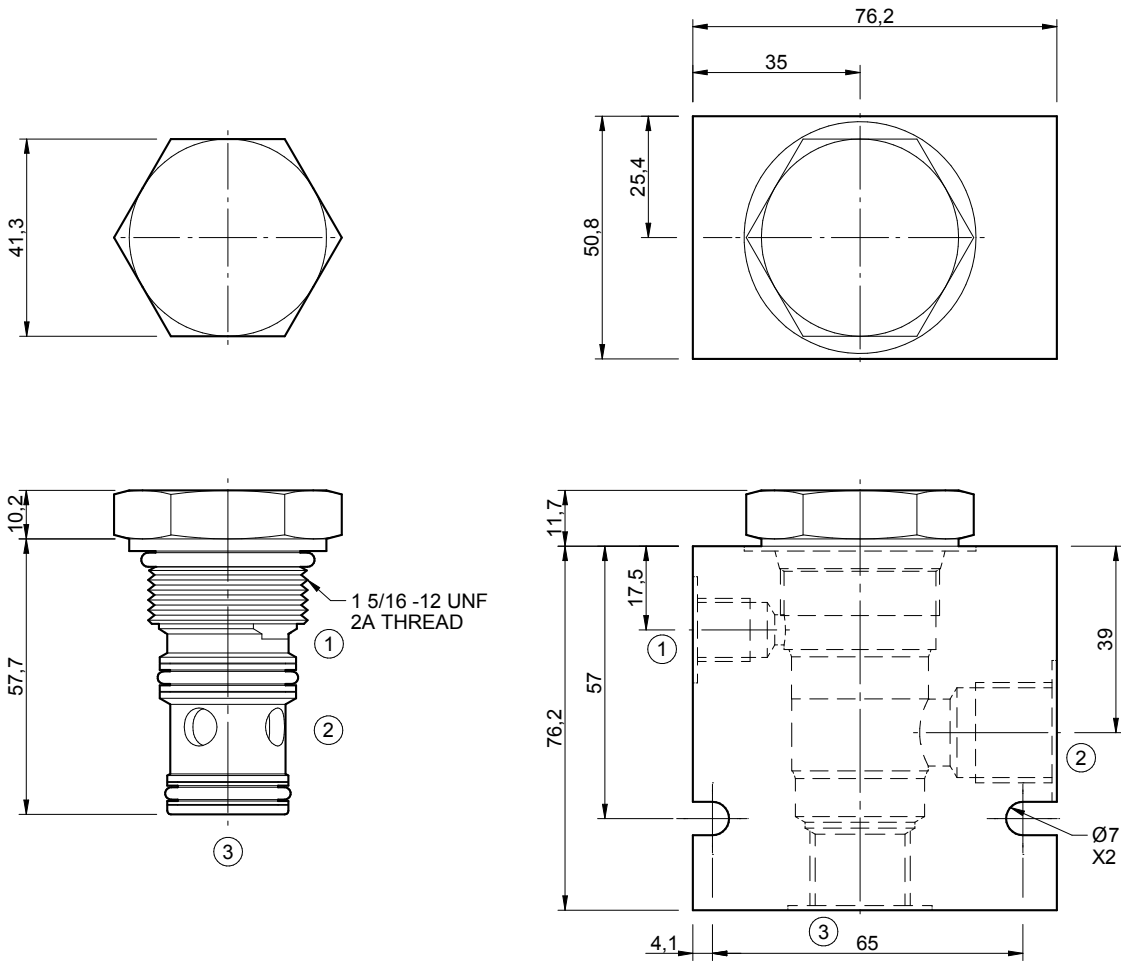
**Performance.**



**Valve Specifications**

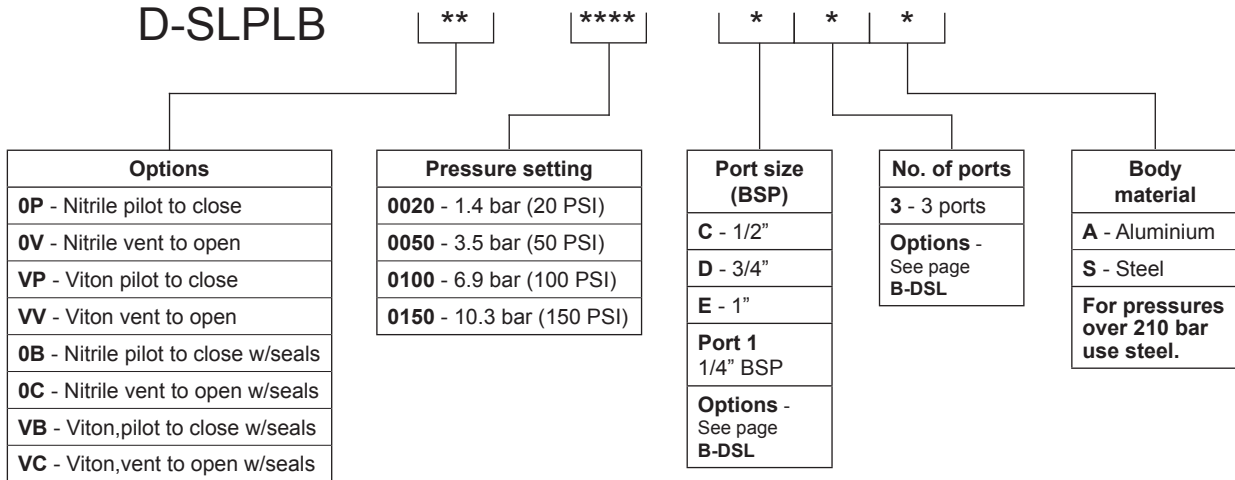
Nominal Flow (lpm)	150
Max. Pressure (bar)	240
Hydraulic Oil	General purpose hydraulic fluid
Viscosity Range	3 to 640 cSt
Filtration	ISO 18/16/13
Operating Temp.	-40 to 120°C
Cartridge Torque	122 Nm
Cavity	SL 16-3 (see cavity data page <b>CAV-SL16-3</b> )
Spare Seal Kit (Viton)	SK-DSL VHDA
Seat Ratio	Area of the Pilot is 1.5 times the area of the seat at Port 3
Weight - Valve only	0.31 kg
Weight - Valve + Body	0.98 kg (alum) 2.29 kg (steel)

**Dimensions**  
[mm]



**Ordering Code**

**D-SLPLB**



\*Formerly DIN 43650 Hirschmann connector.