

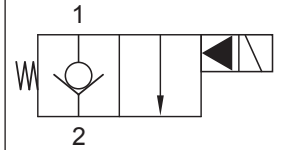
Up to 275 bar - 55 lpm


Operation

This is a solenoid operated 2 way normally closed poppet valve which is typically used to lock a load in position. When energised the poppet opens and releases the load from 1 to 2. De-energised the valve allows free flow from 2 to 1.

In the energised position it should be noted that 2 to 1 flow is restricted to only a pilot flow rate. If free flow is required in both directions when energised, valve type S2B should be used.

This valve can also be used as a directional valve.

Symbol

Features

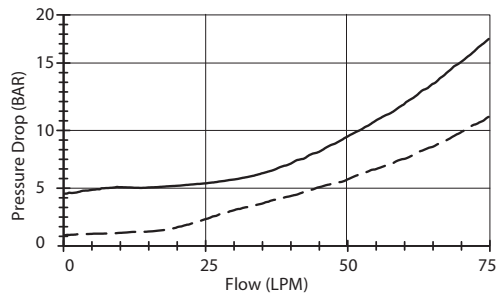
- Hardened parts for long life.
- Efficient wet-armature construction.
- Cartridges are voltage interchangeable.
- Industry common cavity.
- Unitised, molded coil design.
- Continuous duty rated solenoid.
- Optional coil voltages and terminations.
- Optional "I" Coil: Weatherproof, Thermal, Shock, Immersion Safe.



Uses "L" Coil.

Performance

32 cSt / 38°C.



--- Port 1 to 2 (de-eng) — Port 2 to 1 (de-eng)

Specifications

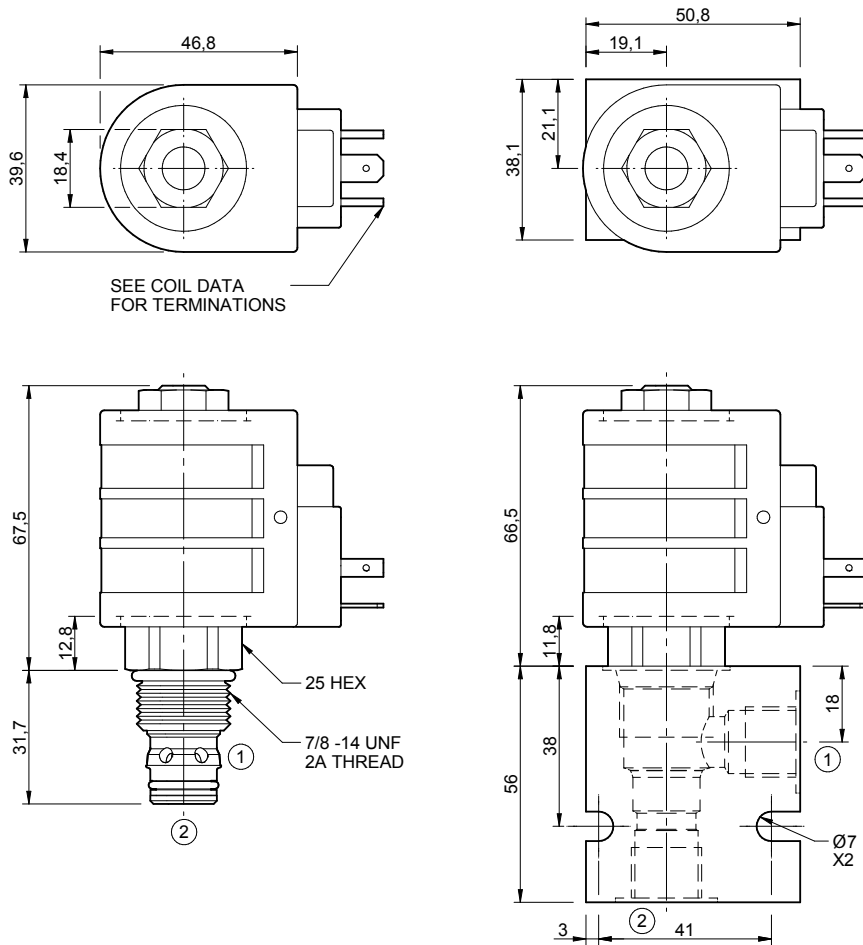
Nom. Flow (lpm)	55
Max. pressure (bar)	275
Internal Leakage (32 cSt)	0 to 0.25 cc/min @ 275 bar
Hydraulic oil	General purpose hydraulic fluid
Viscosity Range	3 to 640 cSt
Filtration	ISO 18/16/13
Operating temp.	-40 to 120°C
Voltage	DC / AC (see coil data page Coil-L)
Cartridge Torque	68 Nm
Coil Nut Torque	5 to 8 Nm
Cavity	DE10-2 (see cavity data page CAV-DE10-2)
Spare Seal Kit (Viton)	SK-DDEVHA
Weight - Cartridge only	0.17 kg
Weight - Cartridge + Coil	0.48 kg
Weight - Cartridge + Coil + Body	0.71 kg (alum) 1.13 kg (steel)

Energisation Chart

Solenoid	Flow Direction	
	1 → 2	2 → 1
De-energised	Load holding	Free flow
Energised	Free flow	Restricted flow

Dimensions

[mm]



Coils can be fitted in any orientation.

Refer to data sheet Coil-L for coil options.

D-HES2A

	**	**	**	*	*	*
Options	Coil termination			Voltage		Port size (BSP)
00 - Nitrile	DL - Double lead	DT - Deutsch on Leads DT04-2P	ML - Metric-Pack on Leads	06 - 06 Vdc	12 - 12 Vdc	B - 3/8"
V0 - Viton	PL - Packard on Leads	WL - Weatherpack on Leads	SS - Single spade	24 - 24 Vdc	36 - 36 Vdc	C - 1/2"
	DS - Double spade	HC - EN 175301-803* (AC&DC)	DI - Deutsch	48 - 48 Vdc	25 - 24 Vac	Options - See page B-DDE
	CL - Conduit Lead - (AC Only)	'I' coils (12 & 24 volts only) weather/immersion proof (IP69)	IA - AMP superseal	11 - 120 Vac	22 - 220 Vac	No. of ports 2 - 2 ports
	DI - Deutsch	Options - See page Coil-L	ID - Deutsch	44 - 440 Vac	Options - See page B-DDE	Body material A - Aluminium S - Steel For pressures over 210 bar use steel.
	Options - See page Coil-L	Omit if coil is not required	IJ - AMP Jr. Timer			

*Formerly DIN 43650 Hirschmann connector.