



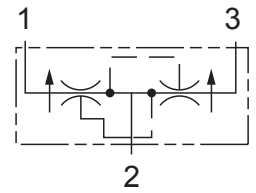
Up to 240 bar - 45 lpm

Operation

In the dividing mode, the D-DGFDT will divert input flow from port (2) to ports (3) and (1), based on the ratio specified, regardless of operating pressure.

The D-DGFDT will combine input flows from ports (3) and (1).

Should circuit operation result in a blockage of either (3) or (1), the opposite port may also close under certain conditions. Should this potential exist, consult the factory.

Symbol

Features

- Hardened parts for long life.
- Industry common cavity.

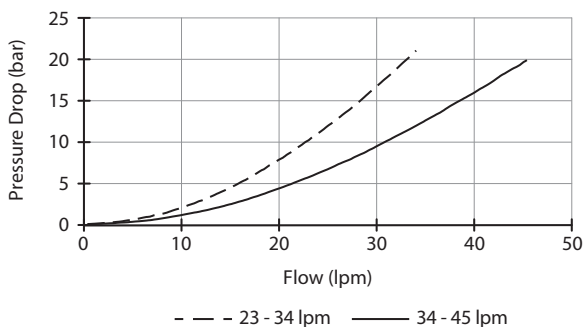
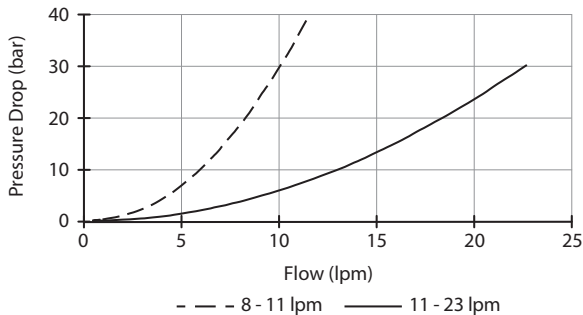


Do not exceed maximum flow per model.

Use where wheel slip (or "drag") needs to be accomplished.

Performance

32 cSc / 38°C.


Specifications

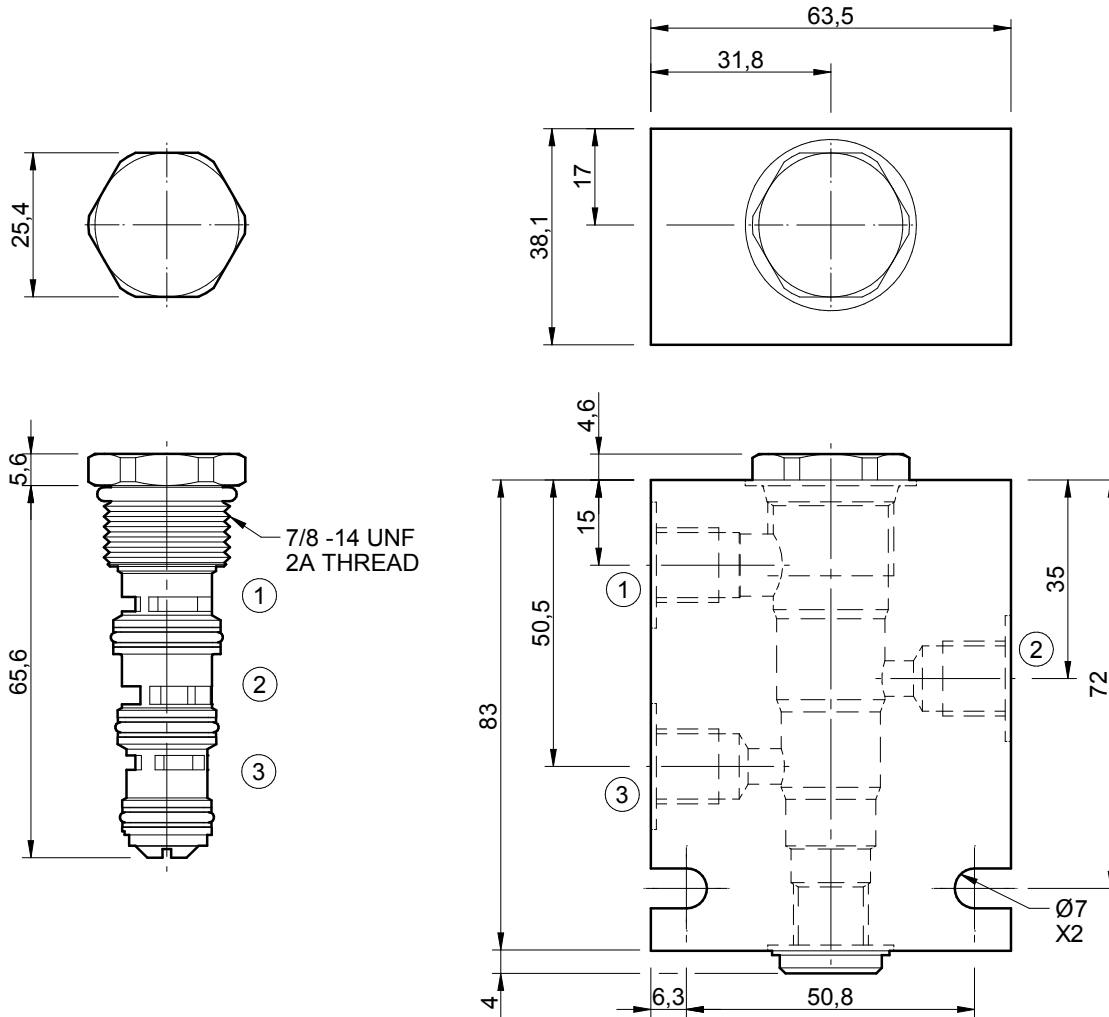
Nom. Flow (lpm)	45
Max. Pressure (bar)	240
Accuracy of Flow Splits	±10% of max. rated inlet flow
Hydraulic Oil	General purpose hydraulic fluid
Viscosity Range	3 to 640 cSt
Filtration	ISO 18/16/13
Operating Temp.	-40 to 120 °C
Cartridge Torque	41 Nm
Cavity	DG10-4 (see cavity data page CAV-DG10-4)
Spare Seal Kit (Viton)	SK-DDGVHDDD
Weight - Valve only	0.10 kg
Weight - Valve + Body	0.56 kg (alum) 1.43 kg (steel)

Traction Flow with 1 Leg Unloaded

8 to 11 lpm Valve	1 lpm
11 to 23 lpm Valve	3 lpm
23 to 34 lpm Valve	4 lpm
34 to 45 lpm Valve	6 lpm

Dimensions

[mm]



Ordering Code

D-DGFDT

