

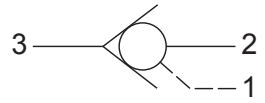
Up to 240 bar - 76 lpm

Operation

The D-SLCPD allows free flow from (3) to (2), and blocks flow from (2) to (3). Flow will be blocked from (3) to (2) when sufficient pressure is applied at (1).

The cartridge has a 2:1 pilot ratio, meaning that at least one half of the load pressure held at (3) is required at (1) to close the valve. The check is spring biased to assure holding in static or no-load conditions.

Symbol



Features

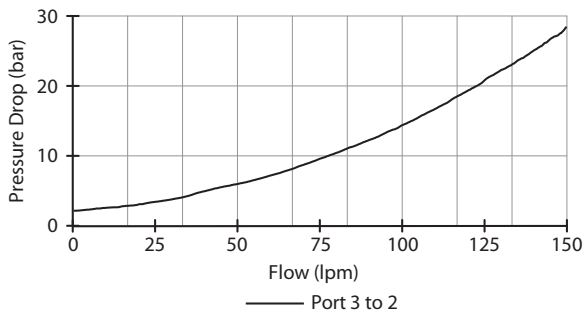
- Hardened parts for long life.
- Industry common cavity.



Special higher bias spring values available. Consult factory.

Performance

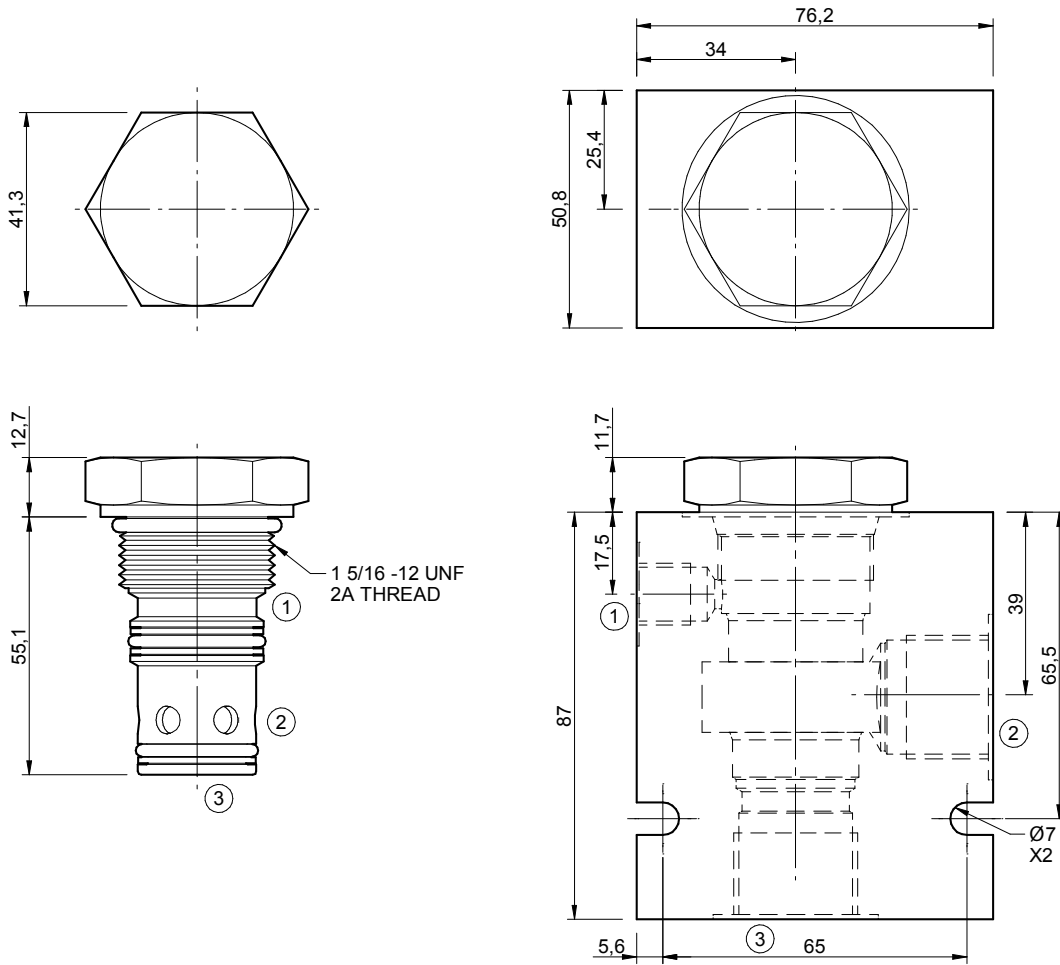
32 cSc / 38°C.



Specifications

Nom. Flow (lpm)	76
Max. Pressure (bar)	240
Pilot Ratio	2:1
Internal Leakage (32 cSt)	0.25 cc/min
Hydraulic Oil	General purpose hydraulic fluid
Viscosity Range	3 to 640 cSt
Filtration	ISO 18/16/13
Operating Temp.	-40 to 120°C
Cartridge Torque	122 Nm
Cavity	SL16-3 (see cavity data page CAV-SL16-3)
Spare Seal Kit (Viton)	SK-DSKVHBA
Weight - Valve only	0.31 kg
Weight - Valve + Body	0.98 kg (alum) 1.29 kg (steel)

Dimensions
[mm]



Ordering Code

