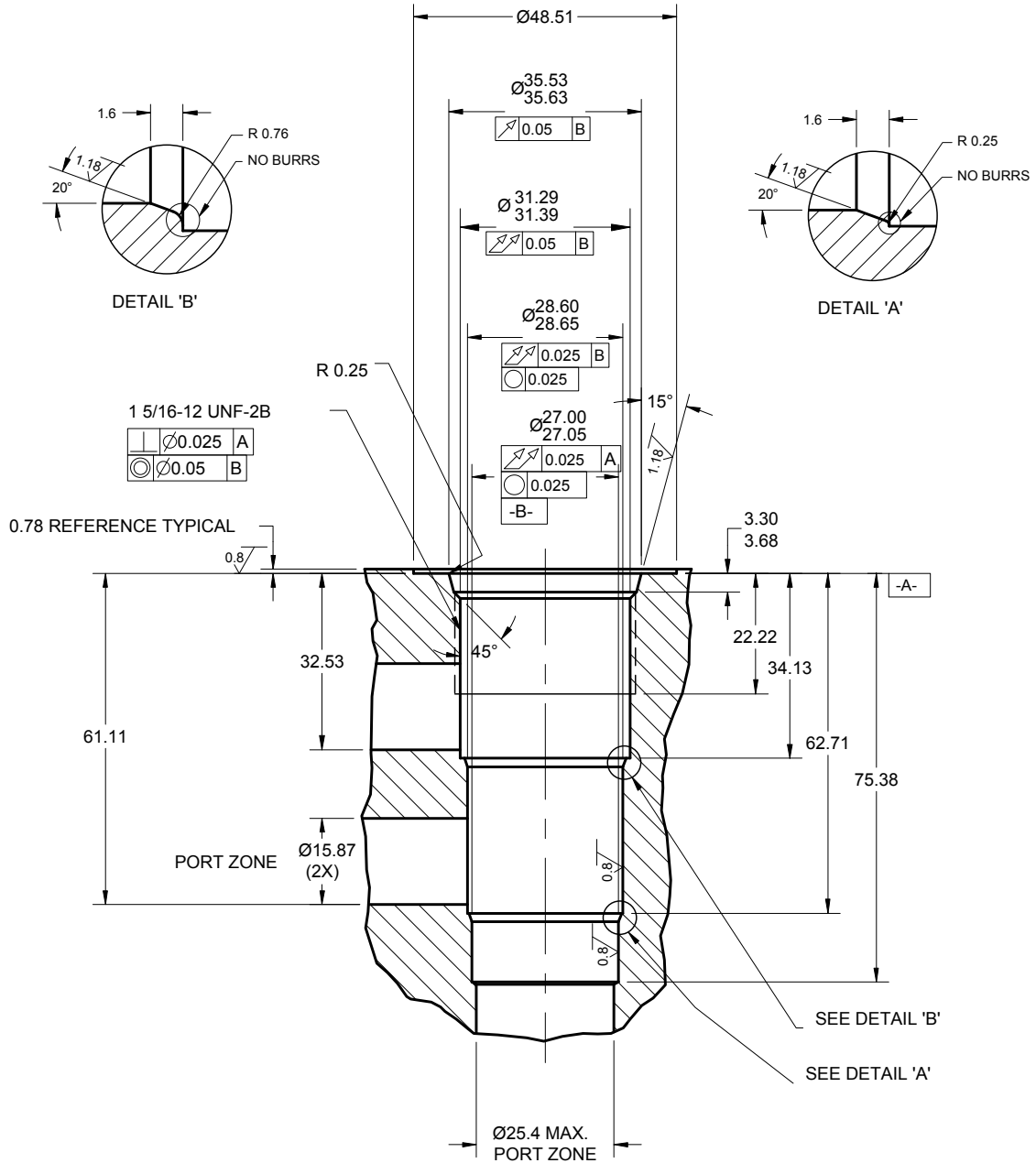


16 size, 1 5/16-12 thread, "Super" series



NOTES:

- 1.) CAVITY CAN BE MACHINED WITH DELTA FORM TOOL #40500018.
- 2.) ALL MACHINED SURFACES TO BE $0.8\sqrt{\text{ }}$ FINISH OR BETTER, EXCLUDING THREADS.
- 3.) IT IS VERY IMPORTANT THAT VALVE CAVITIES MEET ALL DIMENSIONAL AND QUALITY STANDARDS OF CONCENTRICITY AND PERPENDICULARITY. THREADS MUST BE PERPENDICULAR TO THE SPOTFACE SURFACE.