

Up to 250 bar - Flow options up to 15/30/45 lpm

This is an electro-proportional, normally closed poppet type, restrictive type, pressure compensated flow control used for blocking or load holding applications.

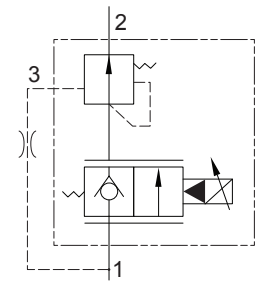
Operation

When de-energised the T-EGC2A blocks flow from (1) to (2) and allows reverse flow from (2) to (1). When energised, the valve regulates flow from (1) to (2) regardless of load pressure. Flow is proportional to current applied to the coil.

Port (3) must be connected via a dampening orifice to port (1) to provide load sense function to the compensator. (also see standard body with integral orifice (0.8mm) and connections B-TEG).

Manual override options available.

Symbol

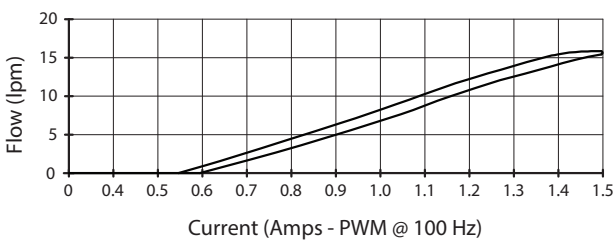


Features

- Efficient wet-armature construction.
- Cartridges are voltage interchangeable.
- Manual override options.
- Industry common cavity.
- Unitised, molded coil design.
- Continuous duty rated solenoid.
- Optional coil voltages and terminations.

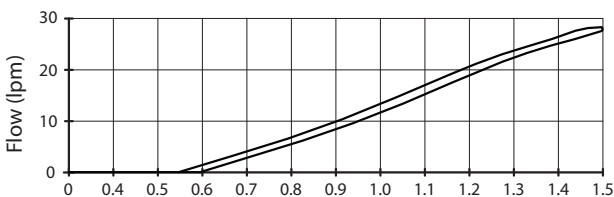
Performance.

Type A - Flow vs. Current. 14 bar Compensated



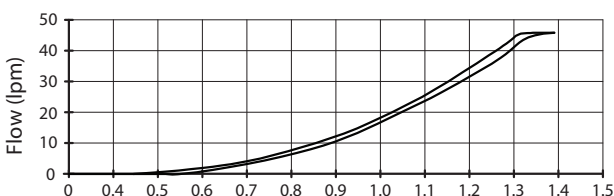
Coil 12 VDC - 7.2 Ohm @ 20°C

Type B - Flow vs. Current. 14 bar Compensated



Coil 12 VDC - 7.2 Ohm @ 20°C

Type C - Flow vs. Current. 14 bar Compensated

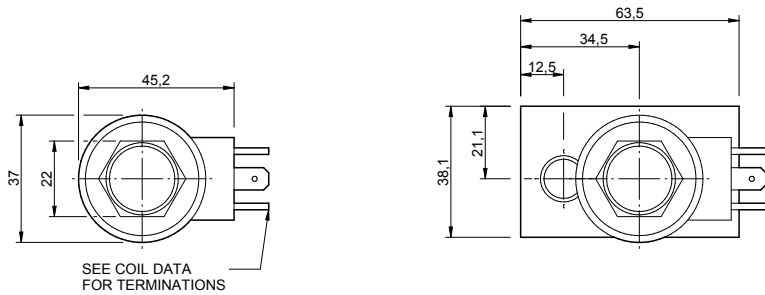


Coil 12 VDC - 7.2 Ohm @ 20°C

Valve Specifications

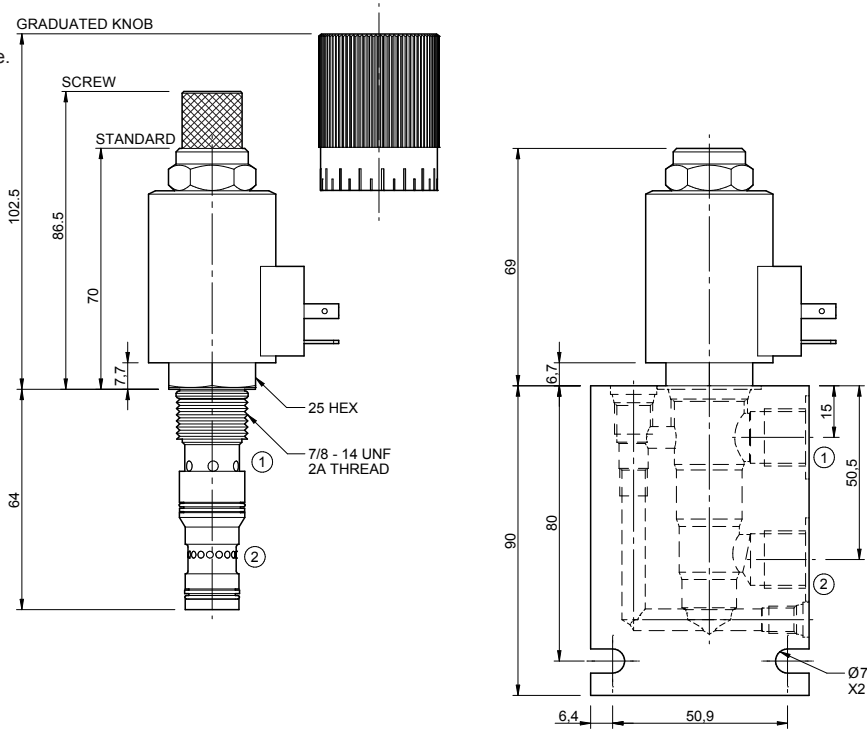
Flow Range (lpm)	see curves for various versions
Max. Pressure (bar)	250
Leakage	0 - 0.25 cc/min at 250 bar
Typical accuracy w/i the control range	+/- 5%
Hydraulic Oil	General purpose hydraulic fluid
Viscosity Range	3 to 400 cSt
Filtration	ISO 18/16/13
Operating Temp.	-25 to 115°C
Cartridge Torque	45 Nm
Coil Nut Torque	3 - 4 Nm
Cavity	DG10-4 (see cavity data page CAV-DG10-4)
Spare Seal Kit (Viton)	SK-T-EGC2A
Weight - Valve only	0.24 kg
Weight - Valve + Body	0.73 kg (alum) 1.64 kg (steel)

Dimensions
[mm]



To Override

Screw clockwise to close.



Ordering Code

T-EGC2A

	**	**	**	*	2	*
Options	Coil termination		Voltage		Port size (BSP)	Body material
Up to 15 lpm	DL - Double lead		12 - 12 Vdc		B - 3/8"	A - Aluminium
A0 - Nitrile standard	DI - Deutsch - Integral DT04-2P		24 - 24 Vdc		C - 1/2"	S - Steel
AS - Nitrile, screw overr.	HC - EN 175301-803*		Options - See page Coil-F			
AK - Nitrile, grad. screw overr.	Options - See page Coil-F					
Up to 30 lpm	Omit if coil is not required					
B0 - Nitrile standard						
BS - Nitrile, screw overr.						
BK - Nitrile, grad. screw overr.						
Up to 45 lpm						
C0 - Nitrile standard.						
CS - Nitrile, screw overr.						
CK - Nitrile, grad. screw overr.						

Notes:

1) For other seals, consult factory.

*Formerly DIN 43650 Hirschmann connector.