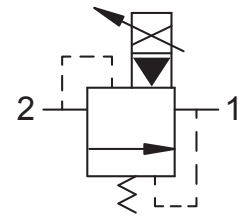




Up to 210 bar - Up to 75 lpm

Symbol



Operation

The D-EEPRB blocks flow from (2) to (1) until sufficient pressure is present at (2) to offset a spring induced force. As solenoid current is increased, it offsets a portion of this force, resulting in a lower relief pressure. Can be infinitely adjusted across a prescribed range in response to a PWM (Pulse Width Modulated) current. Pressure output is inversely proportional to the current input. With full current applied to the solenoid, the valve will free flow from (2) to (1) at approximately 7 bar.

Note: Backpressure on port (1) becomes additive to the pressure setting at a 1:1 ratio.

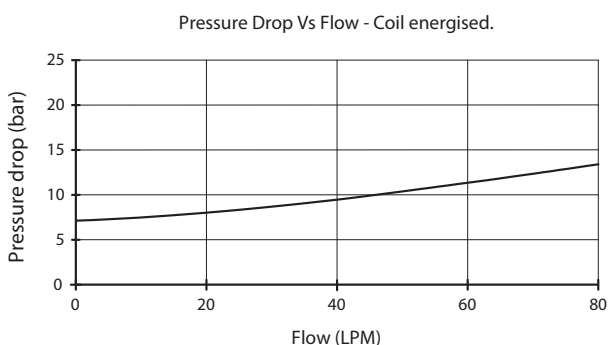
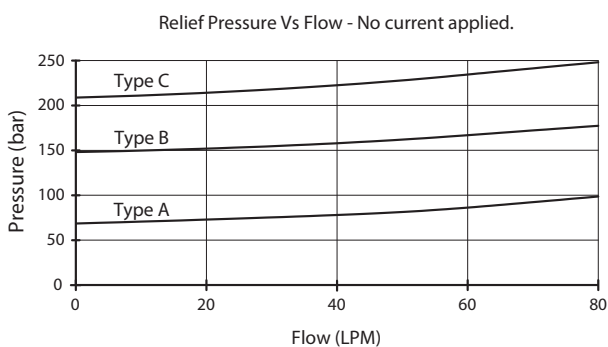
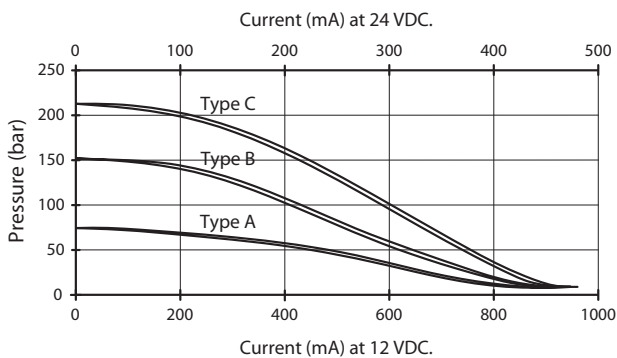
Features

- Efficient wet-armature construction.
- Cartridges are voltage interchangeable.
- Industry common cavity.
- Unitised, molded coil design.
- Continuous duty rated solenoid.
- Optional coil voltages and terminations.



Great for fan drive motor control.

Performance.



Valve Specifications

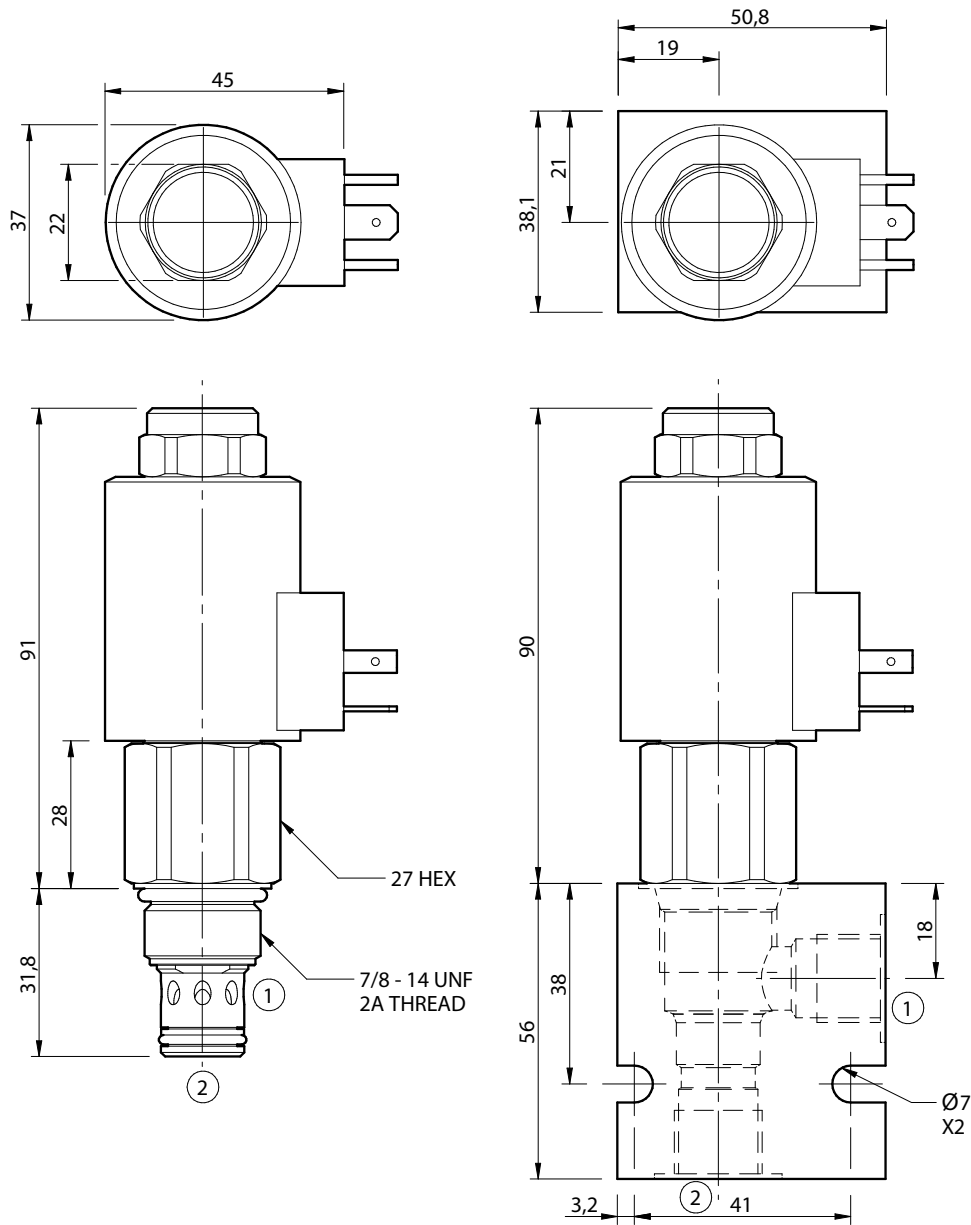
Flow Range (lpm)	0-75
Operating Range (bar)	7-210
Typical Hysteresis	10%
Hydraulic Oil	General purpose hydraulic fluid
Viscosity Range	3 to 640 cSt
Filtration	ISO 18/16/13
Operating Temp.	-40 to 120 °C
Cartridge Torque	41 Nm
Coil Nut Torque	3 - 4 Nm
Cavity	DE10-2 (see cavity data page CAV-DE10-2)
Spare Seal Kit (Viton)	SK-DEVHD
Weight - Valve only	0.28 kg
Weight - Cartridge + Coil	0.47 kg
Weight - Cartridge + Coil + Body	0.70 kg (alum) 1.12 kg (steel)

Coil Specifications

Current Supply	PWM (Pulse Width Modulation)
Rated Current Range	100 - 1000 mA
PWM or Super-imposed Dither Frequency	120 - 200 Hz or higher
Coil Resistance (12 vdc)	7.2 Ohm +/- 5% at 20°C

Dimensions

[mm]


Ordering Code
D-EEPRB

Options	Coil termination	Voltage	Port size (BSP)	No. of ports	Body material
0A - Nitrile (7 - 70 bar) VA - Viton (7 - 70 bar) 0B - Nitrile (7 - 150 bar) VB - Viton (7 - 150 bar) 0C - Nitrile (7 - 210 bar) VC - Viton (7 - 210 bar)	HC - EN 175301-803* DI - Deutsch JT - AMP Jr. Timer Options - See page Coil-F Omit if coil is not required	12 - 12 Vdc 24 - 24 Vdc Options - See page Coil-F	B - 3/8" C - 1/2" Options - See page B-DDE	2 - 2 ports Options - See page B-DDE	A - Aluminium S - Steel

*Formerly DIN 43650 Hirschmann connector.