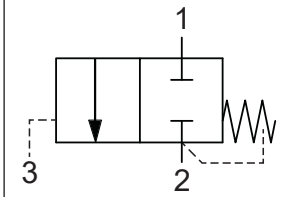




Up to 276 bar - 38 lpm

Operation

The D-HFPDE blocks flow at ports (2) and (1). On attainment of a predetermined pressure at (3), the valve shifts to allow flow from (1) to (2).

Symbol

Features

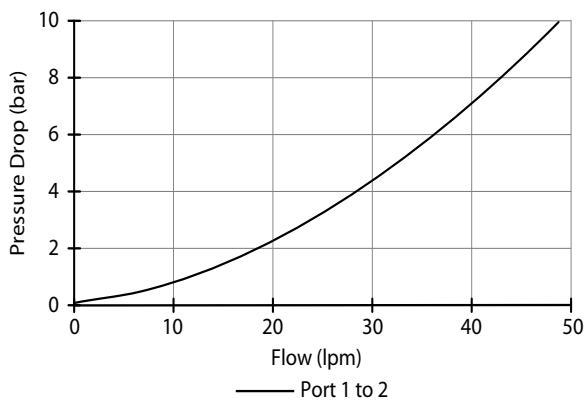
- Hardened parts for long life and low leakage.
- Industry common cavity.



0.8 to 1.5 mm diameter orifice recommended beneath port 3

Performance

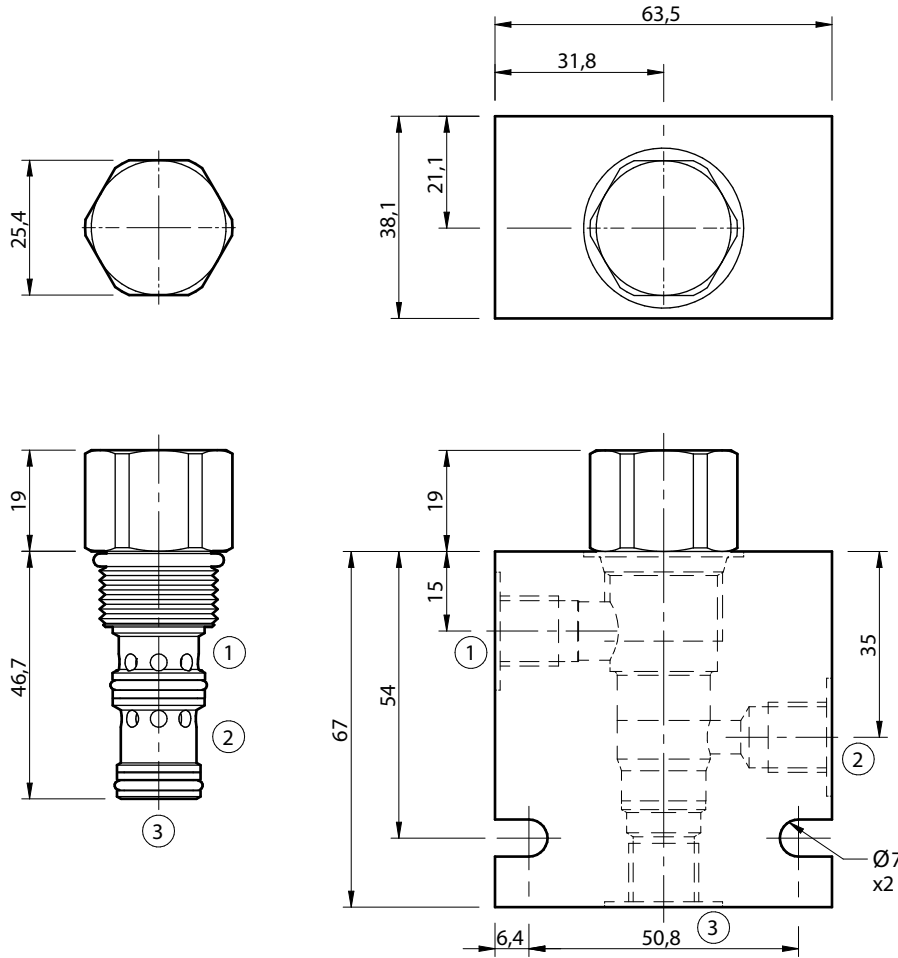
32 cSt / 38°C.


Specifications

Nom. Flow (lpm)	38
Max. Pressure (bar)	276
Internal Leakage (32 cSt)	82 cc/min
Hydraulic Oil	General purpose hydraulic fluid
Viscosity Range	3 to 640 cSt
Filtration	ISO 18/16/13
Operating Temp.	-40 to 120°C
Cartridge Torque	40.6 Nm
Cavity	DF10-3 (see cavity data page CAV-DF10-3)
Spare Seal Kit (Viton)	SK-DDFVHAA
Weight - Valve only	0.26 kg
Weight - Valve + Body	0.63 kg (alum) 1.32 kg (steel)

Dimensions

[mm]



Ordering Code

