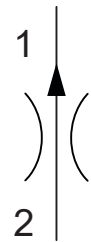




Up to 240 bar - 19-95 lpm

**Symbol**

**Operation**

The D-SJFCF maintains a constant flow rate out of (1) regardless of load pressure changes in the circuit downstream of (1). The valve begins to respond to load changes when the flow through the valve creates a pressure differential across the control orifice, in excess of the spring load. Consult chart for regulation performance. Reverse flow (1) to (2) returns through the control orifice and is non-compensated.

**Features**

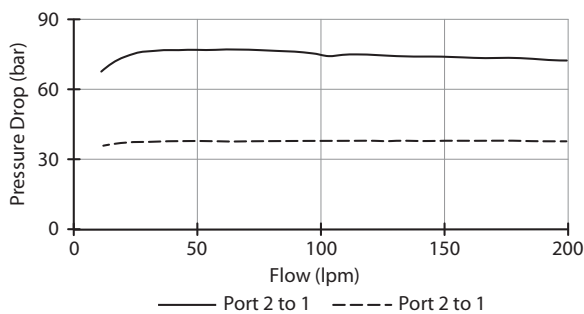
- Hardened parts for long life and low leakage.
- Industry common cavity.



For adjustable setting see D-SJFCA

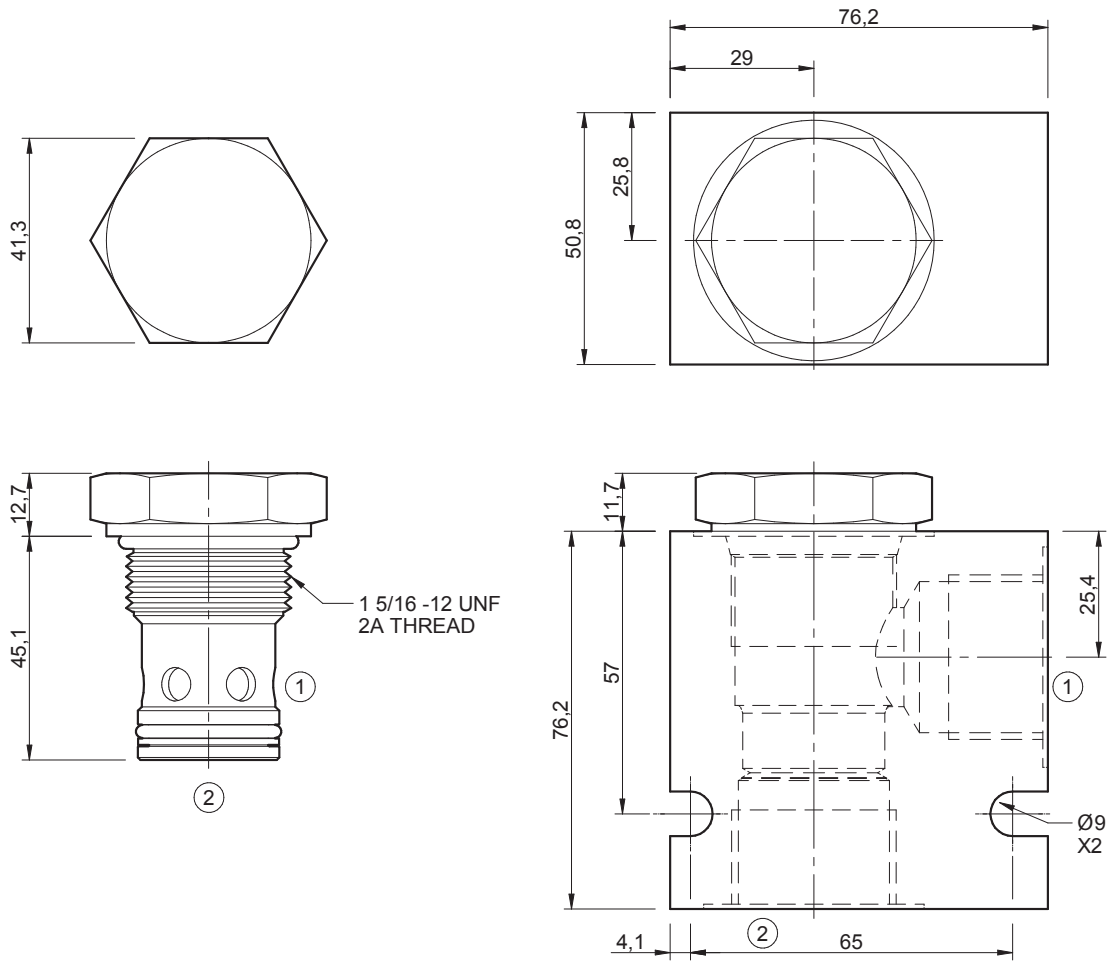
**Performance**

32 cSc / 38°C.


**Specifications**

Nom. Flow (lpm)	19 - 95
Max. Pressure (bar)	240
Hydraulic Oil	General purpose hydraulic fluid
Viscosity Range	3 to 640 cSt
Filtration	ISO 18/16/13
Operating Temp.	-40 to 120°C
Cartridge Torque	122 Nm
Cavity	SJ16-2 (see cavity data page <b>CAV-SJ16-2</b> )
Spare Seal Kit (Viton)	SK-DSJVHA
Weight - Valve only	0.29 kg
Weight - Valve + Body	0.86 kg (alum) 1.92 kg (steel)

**Dimensions**  
[mm]



**Ordering Code**

