



Size: 04, ISO 4401

Up to 350 bar - Up to 25 lpm

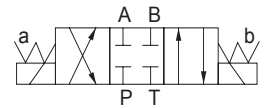
Description

These directional control valves are solenoid operated spool type. They control the start, stop and direction of an oil flow. The robust construction provides for high pressure operation, and has a wide range of spool, operating voltage and over-ride options.

Features

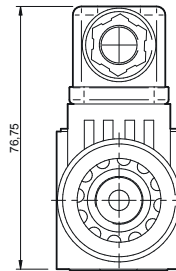
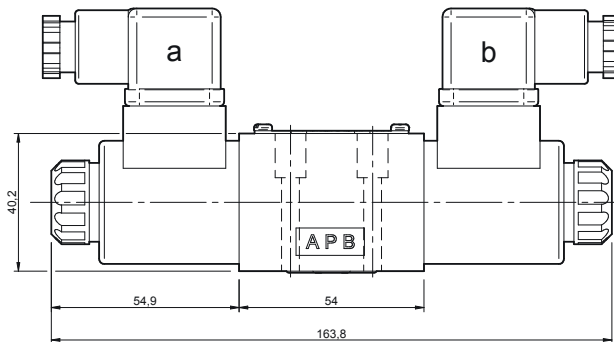
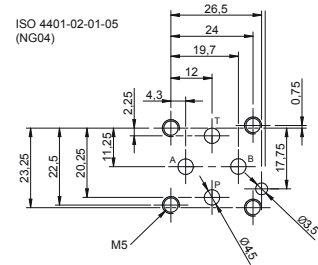
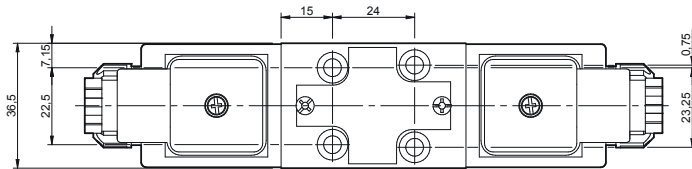
- Wide range of spool options
- Low internal leakage
- Detent and non-detent override option

Symbol



Dimensions

[mm]



Installation Advice

Mounting Orientation: Any, horizontal preferred.
 Bolt: M5X35. Grade 12.9. Allow a minimum thread engagement of 1.5x D.
 Tightening Torque: 5-6Nm.
 Mounting Surface: Ra 0.8 roughness.

Ordering Code

RS2 — 0711 / * **** — * * HY

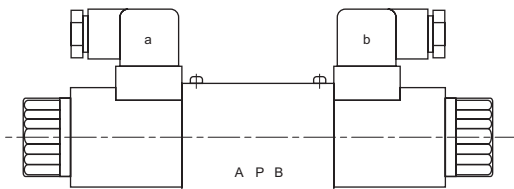
Spool Type	Coil Connector Type	Voltage Options	Plug Options for Din Type Coils	Manual Over-Ride & Other Options
Seals	00 - No Coil(s)	00 - No Coil(s)	0 - No Coil Plugs	M - Std Flush Push Pin
N - Nitrile	HC - Din 43650 (Std)	12 - 12v DC	D - Std Din Plugs supplied	WP - Waterproof Push Button
V - Viton	ID - Deutsch DT	24 - 24v DC	L - LED Din Plug with protective rectifier	S - Screw Detent
	DL - Double Leadwire **			X - Special Option
	** Available on request.			

Specifications

Working Pressure (Bar)	P, A & B Ports	315 (350 intermitent)	
	T Port	100	
Max. Working Flow (lpm)	25		
Working Fluids	General purpose hydraulic fluid		
Fluid Temp.(C°)	-20 to 70		
Viscosity Range, Centistokes (Cst)	2.8 to 380		
Weights (Kg)	Single Solenoid	1.45	
	Double Solenoid	1.95	
Working Voltage	Direct Current	12	24
Coil Power (Watts)	25 (12 Volts = 2.1 Amps, 24 Volts = 1.0 Amps)		
Response Time (ms)	Open	50-60	
	Closed	50-70	
Switching Frequency - Cycles / Hour	15000		
Insulation Grade	IP65		

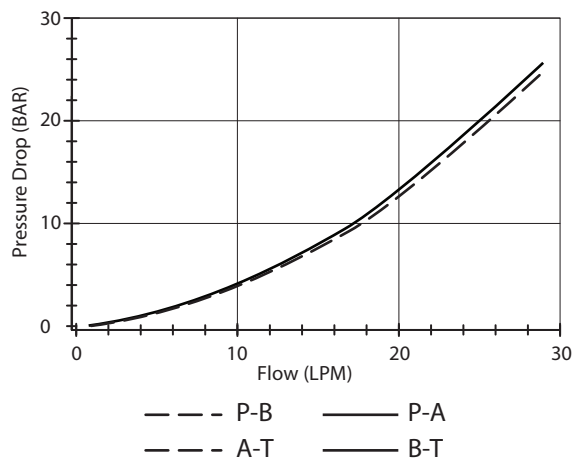
* = Consult RFP Ltd.

Coil Identification



When Solenoid 'A' is energised flow = P → B, A → T. When Solenoid 'B' is energised flow = P → A, B → T

Pressure Drop Curves





Size: 04, ISO 4401

Up to 350 bar - Up to 25 lpm

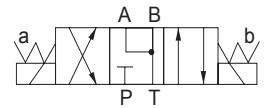
Description

These directional control valves are solenoid operated spool type. They control the start, stop and direction of an oil flow. The robust construction provides for high pressure operation, and has a wide range of spool, operating voltage and over-ride options.

Features

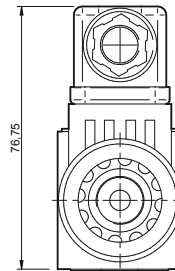
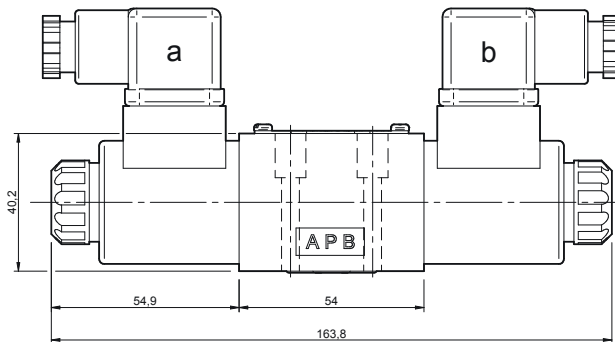
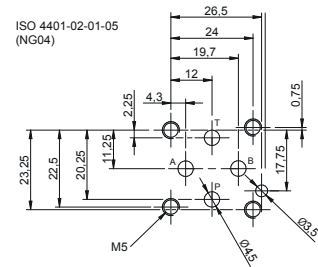
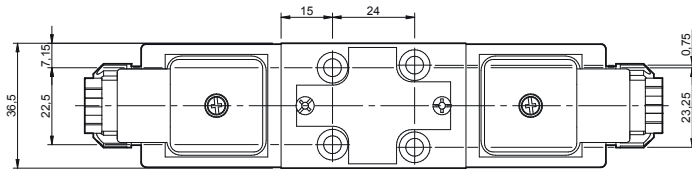
- Wide range of spool options
- Low internal leakage
- Detent and non-detent override option

Symbol



Dimensions

[mm]



Installation Advice

Mounting Orientation: Any, horizontal preferred.
 Bolt: M5X35. Grade 12.9. Allow a minimum thread engagement of 1.5x D.
 Tightening Torque: 5-6Nm.
 Mounting Surface: Ra 0.8 roughness.

Ordering Code

RS2 — 0713 / * **** — * * HY

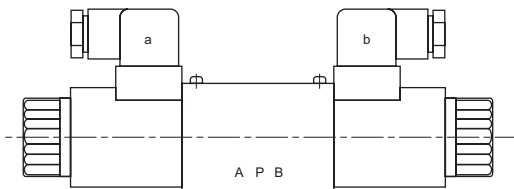
Spool Type	Coil Connector Type	Voltage Options	Plug Options for Din Type Coils	Manual Over-Ride & Other Options
Seals	00 - No Coil(s)	00 - No Coil(s)	0 - No Coil Plugs	M - Std Flush Push Pin
N - Nitrile	HC - Din 43650 (Std)	12 - 12v DC	D - Std Din Plugs supplied	WP - Waterproof Push Button
V - Viton	ID - Deutsch DT	24 - 24v DC	L - LED Din Plug with protective rectifier	S - Screw Detent
	DL - Double Leadwire **			X - Special Option
	** Available on request.			

Specifications

Working Pressure (Bar)	P, A & B Ports	315 (350 intermitent)	
	T Port	100	
Max. Working Flow (lpm)	25		
Working Fluids	General purpose hydraulic fluid		
Fluid Temp.(C°)	-20 to 70		
Viscosity Range, Centistokes (Cst)	2.8 to 380		
Weights (Kg)	Single Solenoid	1.45	
	Double Solenoid	1.95	
Working Voltage	Direct Current	12	24
Coil Power (Watts)	25 (12 Volts = 2.1 Amps, 24 Volts = 1.0 Amps)		
Response Time (ms)	Open	50-60	
	Closed	50-70	
Switching Frequency - Cycles / Hour	15000		
Insulation Grade	IP65		

* = Consult RFP Ltd.

Coil Identification



When Solenoid 'A' is energised flow = P → B, A → T. When Solenoid 'B' is energised flow = P → A, B → T

Pressure Drop Curves

