



Size: 06, ISO 4401

Up to 350 bar - Up to 80 lpm

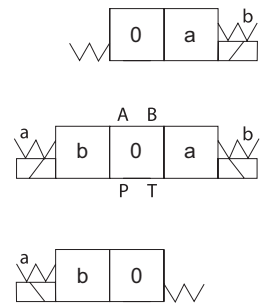
### Description

These solenoid operated directional spool valves are designed to control the start, stop and direction of oil flow for both single and double acting hydraulic circuits. The robust construction for high pressure operation, together with optimised large flow paths for low pressure drop, make these valves ideal for providing the accurate and energy efficient control required by modern hydraulically controlled machines.

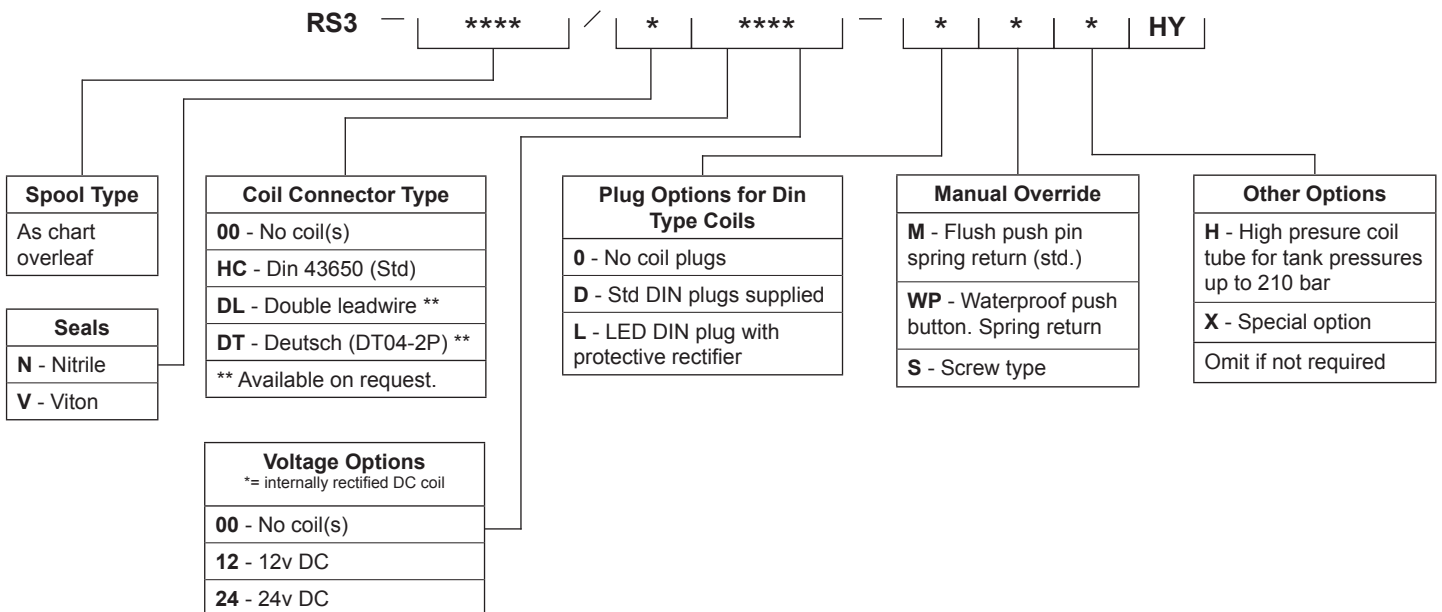
### Features

- Wide range of spool options
- Low internal leakage
- Low pressure drop design
- Detent and non-detent override option

### Symbol



### Ordering Code



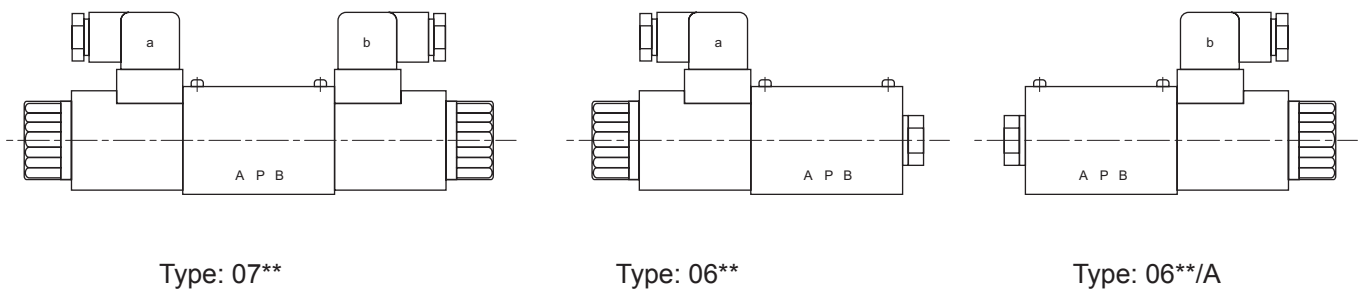
**Spool Type Chart**

0711		0611		0611/A		0631							
0710		0610		0610/A		0630							
0713		0613		0613/A		0632							
0715		0615		0615/A		0631/A							
0714		0614		0614/A		0630/A							
3C7		2B7B		2B7BL		0632/A							
0718		0618		0618/A		<p>Mechanical position *</p> <table border="1"> <tbody> <tr> <td>0751</td> <td></td> </tr> <tr> <td>0750</td> <td></td> </tr> <tr> <td>0752</td> <td></td> </tr> </tbody> </table>		0751		0750		0752	
0751													
0750													
0752													
0717		0617		0617/A									
0716		0616		0616/A									
3C12		2B12B		2B12BL		<p>No return spring and no mechanical positioning *</p> <table border="1"> <tbody> <tr> <td>0771</td> <td></td> </tr> <tr> <td>0770</td> <td></td> </tr> <tr> <td>0772</td> <td></td> </tr> </tbody> </table>		0771		0770		0772	
0771													
0770													
0772													
0758		0658		0658/A									
0719		0619		0619/A									

\* Must be horizontally mounted

= Non Standard.

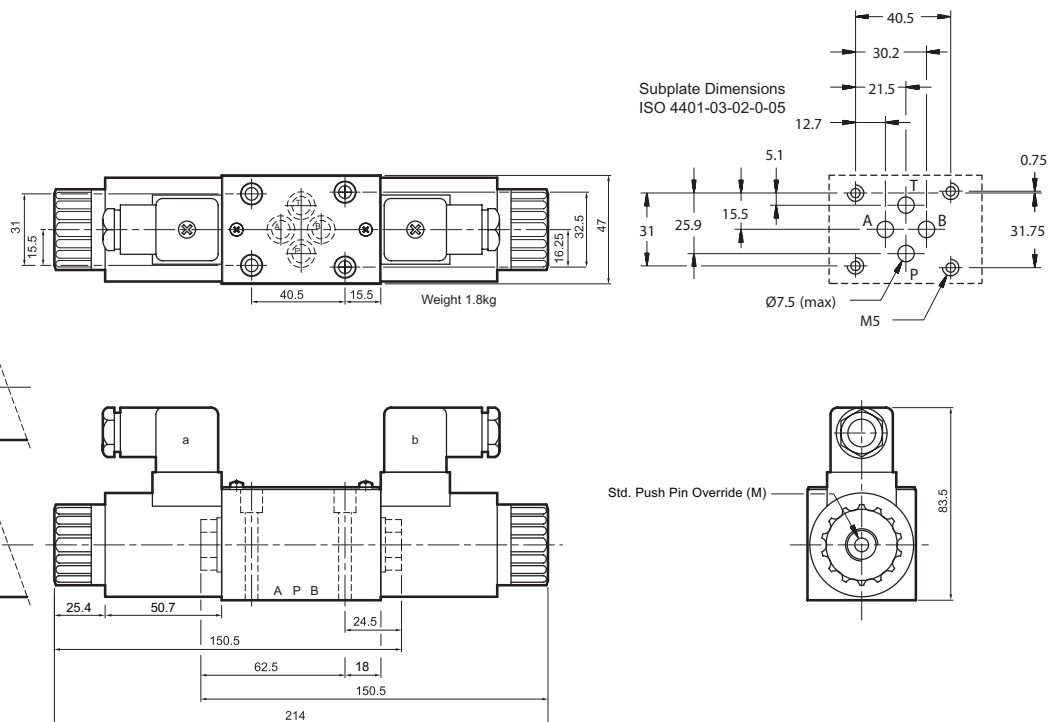
**Coil Identification**



**Specifications**

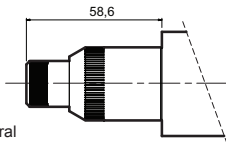
Working Pressure (Bar)	P, A & B Ports	315 (350 Bar intermittent)
	T Port	100
Max. Working Flow (lpm)	up to 80 (see Flow Pressure Performance graph)	
Working Fluids	General purpose hydraulic fluid	
Fluid Temp.(C°)	-20 to 70	
Viscosity Range, Centistokes (Cst)	2.8 to 380	
Weights (Kg)	Single Solenoid	1.45
	Double Solenoid	1.95
Response Time (ms)	Open	50-60
	Closed	50-70
Switching Frequency - Cycles/Hour	15000	
Insulation Grade	IP65	
Duty Rating	Continuous	
Working Voltage (V)	DC	
	12	24
Resistance @ 20°C (Ohms)	4.80	19.20
Current (A)	2.50	1.25
Watts	30	30

**Dimensions**  
[mm]



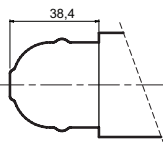
**Screw Type (S) Override**

**To Override**  
 ↻ to override.  
 ↺ unscrew fully for neutral de-energised position.



**Waterproof Push Button (WP) Override**

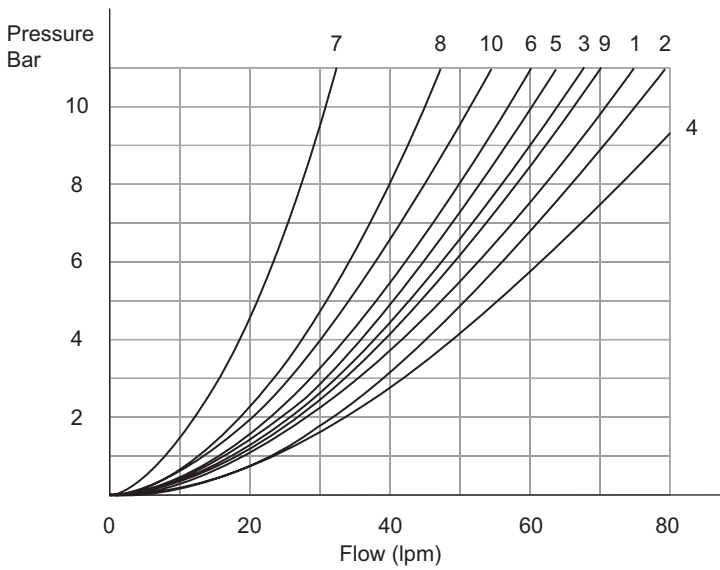
**To Override**  
 Push to override. Spring return.



**Installation Advice**

Mounting Orientation: Any, horizontal preferred.  
 Bolt: M5X45. Grade 12.9. Allow a minimum thread engagement of 1.5x D.  
 Tightening Torque: 7 Nm.  
 Mounting Surface: 4401 - 03 - 02 - 0 - 05 Ra 0.8 roughness.  
 Spare Seal Kit: SK-RS3-00(Nitrile)  
 SK-RS3-0V(Viton)

**Pressure Drop Curves**

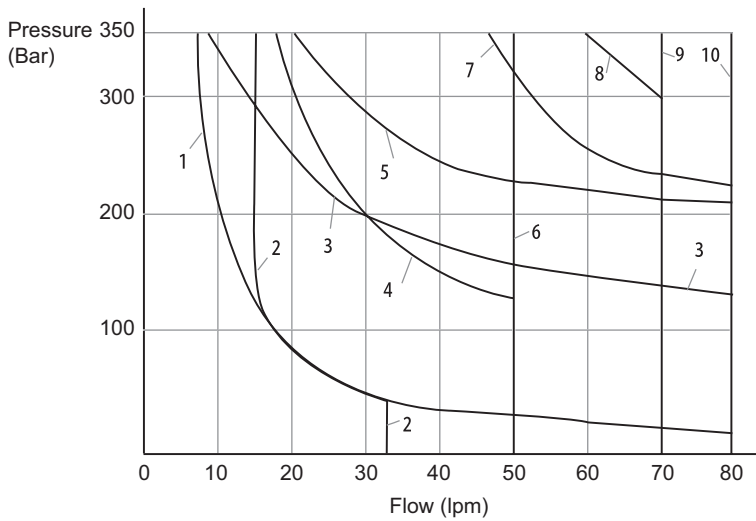


Spool Code	Direction			
	P → A	P → B	A → T	B → T
0632, 0632/A	3	3	-	-
0630	1	1	3	1
0631, 0631/A	5	5	3	3
0711	3	3	1	1
0715	1	3	1	1
0714	10	10	9	9
0710	2	4	2	2
0713	1	1	2	1
0717/3C12	3	3	4	9
0718	2	3	3	3
0758	3	1	1	1
0719	5	5	4	-
3C7	1	2	1	1

Tested with solenoid at working temperature with -10% rated voltage.  
 Mineral Oil: 41Cst @ 50°C

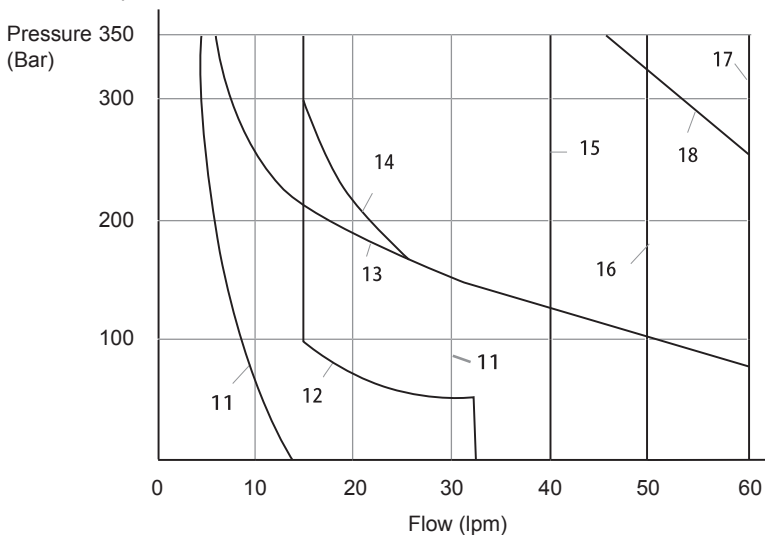
**Flow Pressure Performance**

**DC Solenoid Operation**



DC Solenoid Operation 12v, 24v	
Curve	Symbol
1	0632, 0632/A
2	3C7
3	0632, 0632/A
4	0715, 0758
5	0713
6	0714, 0710
7	0772, 0752, 0717, 3C12
8	0630, 0631, 0631/A
9	0718
10	0711, 0719, 0770, 0750, 0771, 0751

**AC Solenoid Operation**



AC Solenoid Operation 110v, 220v, 50 Hz	
Curve	Symbol
11	0632, 0632/A
12	3C7
13	0632, 0632/A
14	0715, 0758
15	0714
16	0630
17	0772, 0752, 0770, 0750, 0771, 0751, 0711, 0717, 0718, 0719, 3C12
18	0630, 0631, 0631/A