




Up to 240 bar - 57 lpm

This is a direct-acting differential area poppet type relief valve, typically used to provide main relief protection against surge and overload conditions. It is fast acting and dirt tolerant and can be used for continuous duty and intermittent applications providing accurate stable pressure control. It also has a flat pressure rise versus increase in flow rate and a has reasonably high flow capacity relative to physical size.

### Operation

The D-DERCD blocks flow from (1) to (2) until sufficient pressure is present at (1) to force the poppet to open and allow metered flow from (1) to (2). The cartridge offers smooth transition in response to load changes in common hydraulic circuits.

### Adjustment

Turn  to increase pressure.

### Features

- Hardened parts for long life.
- Industry common cavity.

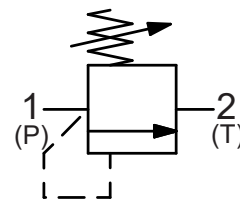


*Installation Space Saving Product.*

*Concealed adjustment / cannot be field adjusted.*

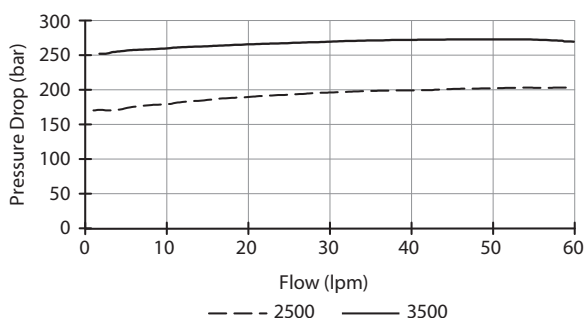
*Not recommended for crossover relief valve applications, use D-DERWD*

### Symbol



### Performance

32 cSt / 38°C.

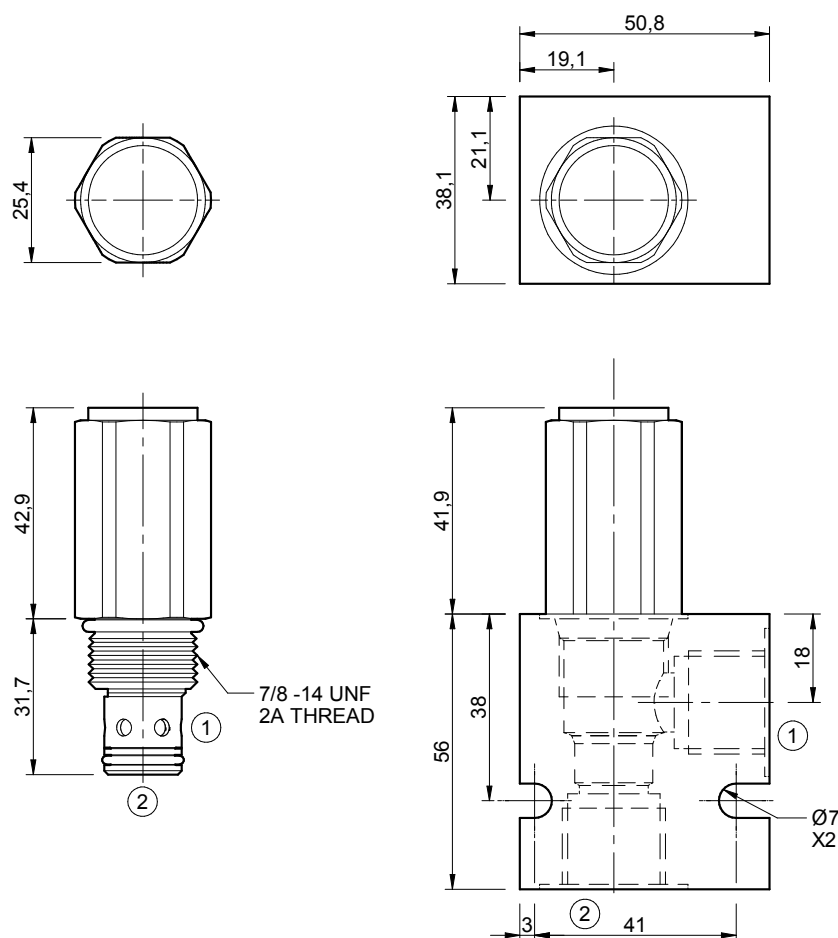


### Specifications

Nom. Flow (lpm)	57
Max. Pressure (bar)	240
Hydraulic Oil	General purpose hydraulic fluid
Viscosity Range	3 to 640 cSt
Filtration	ISO 18/16/13
Operating Temp.	-40 to 120°C
Cartridge Torque	41 Nm
Cavity	DE10-2 (see cavity data page <b>CAV-DE10-2</b> )
Spare Seal Kit (Viton)	SK-DDEVHA
Weight - Valve only	0.17 kg
Weight - Valve + Body	0.40 kg (alum) 0.82 kg (steel)

## Dimensions

[mm]



### Ordering Code

