



Up to 275 bar - 57 lpm

This is a direct-acting differential area poppet type relief valve, typically used to provide main relief protection against surge and overload conditions. It is fast acting and dirt tolerant and can be used for continuous duty and intermittent applications providing accurate stable pressure control. It also has a flat pressure rise versus increase in flow rate and a has reasonably high flow capacity relative to physical size.

Operation

The D-DERVD blocks flow from (1) to (2) until sufficient pressure is present at (1) to force the poppet to open and allow metered flow from (1) to (2). The cartridge offers smooth transition in response to load changes in common hydraulic circuits.

Adjustment

Turn  to increase pressure.

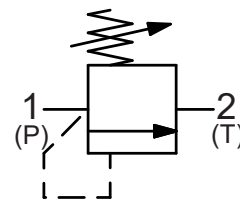
Features

- Hardened parts for long life.
- Industry common cavity.



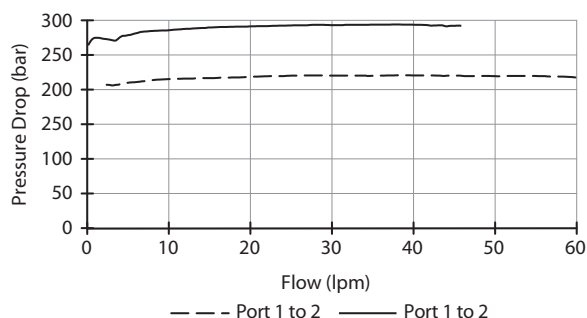
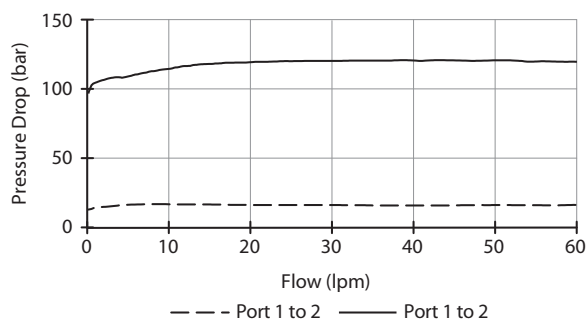
*Good adjustment resolution.
good pressure vs. flow characteristic.*

Symbol



Performance

32 cSt / 38°C.

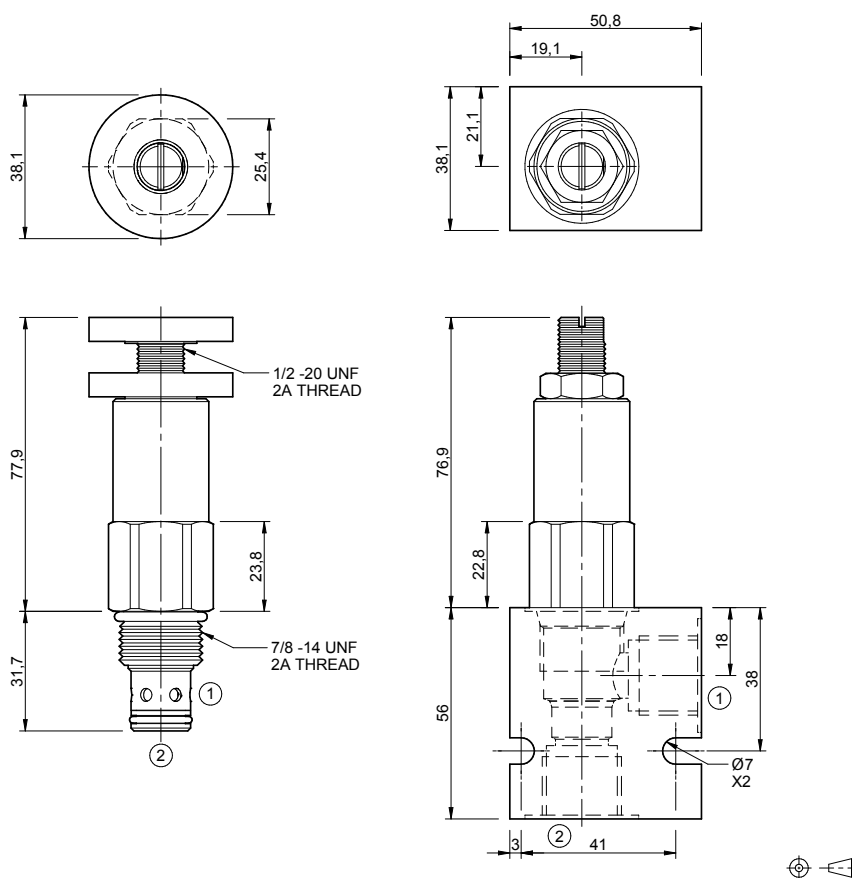


Specifications

Nom. Flow (lpm)	57
Max. Pressure (bar)	275
Hydraulic Oil	General purpose hydraulic fluid
Viscosity Range	3 to 640 cSt
Filtration	ISO 18/16/13
Operating Temp.	-40 to 120°C
Cartridge Torque	41 Nm
Cavity	DE10-2 (see cavity data page CAV-DE10-2)
Spare Seal Kit (Viton)	SK-DDEVHA
Weight - Valve only	0.26 kg
Weight - Valve + Body	0.49 kg (alum) 0.91 kg (steel)

Dimensions

[mm]



Ordering Code

D-DERVD

Options 00 - Nitrile V0 - Viton A0 - Nitrile, Screen W0 - Viton, Screen 0K - Nitrile, Knob VK - Viton, Knob AK - Nitrile, Knob, Screen VK - Viton, Knob, Screen Use screen only if flow direction is from (1) to (2).	Pressure setting 0200 - 3 to 14 bar 1500 - 14 to 103 bar 3000 - 103 to 207 bar 4000 - 172 to 276 bar	Port size (BSP) B - 3/8" C - 1/2" Options - See page B-DDE	No. of ports 2 - 2 ports Options - See page B-DDE	Body material A - Aluminium S - Steel For pressures over 210 bar use steel.
Knob Part No. PT-KN22020004				