




Up to 350 bar - 150 lpm

This is a direct-acting differential area poppet type relief valve, typically used to provide main relief protection against surge and overload conditions. It is fast acting and dirt tolerant and can be used for continuous duty and intermittent applications providing accurate stable pressure control. It also has a flat pressure rise versus increase in flow rate and a has reasonably high flow capacity relative to physical size.

Operation

The D-HERVD blocks flow from (1) to (2) until sufficient pressure is present at (1) to force the poppet to open and allow metered flow from (1) to (2). The cartridge offers smooth transition in response to load changes in common hydraulic circuits.

Adjustment

Turn  to increase pressure.

Features

- Hardened parts for long life.
- Industry common cavity.

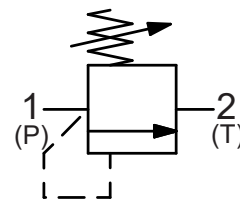


Good pressure vs. flow characteristic.

Recommended return line pressure as shown on Performance graph.

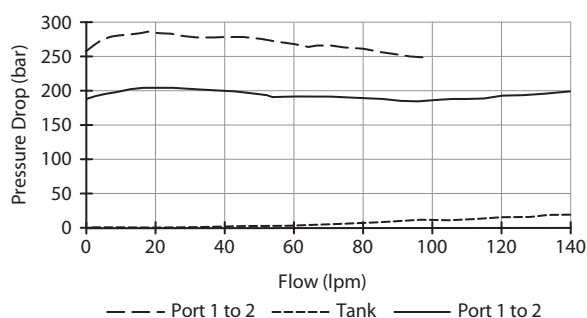
Undercut cavity recommended for max. flows. (consult factory for details)

Symbol



Performance

32 cSt / 38°C.

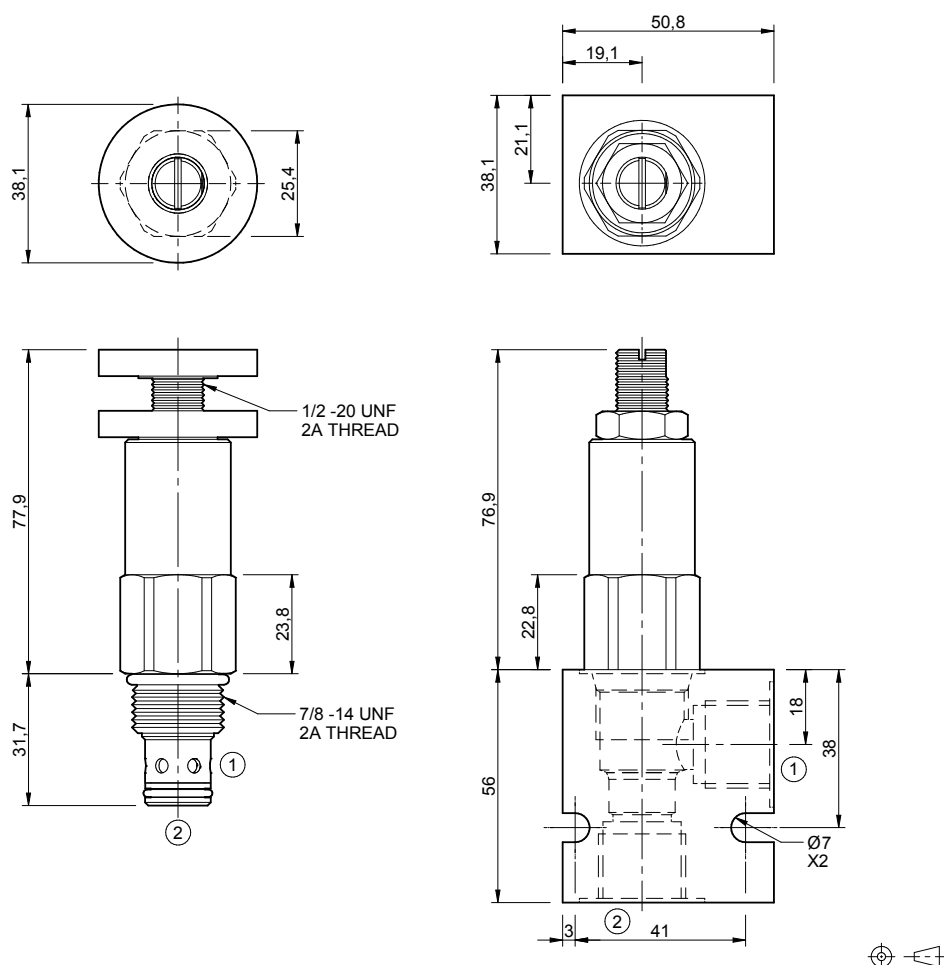


Specifications

Nom. Flow (lpm)	150
Max. Pressure (bar)	350
Hydraulic Oil	General purpose hydraulic fluid
Viscosity Range	3 to 640 cSt
Filtration	ISO 18/16/13
Operating Temp.	-40 to 120°C
Cartridge Torque	68 Nm
Cavity	DE10-2 (see cavity data page CAV-DE10-2)
Spare Seal Kit (Viton)	SK-DDEVHA
Weight - Valve only	0.26 kg
Weight - Valve + Body	0.49 kg (alum) 0.91 kg (steel)

Dimensions

[mm]



Ordering Code

D-HERVD

Options
00 - Nitrile
V0 - Viton
A0 - Nitrile, Screen
W0 - Viton, Screen
0K - Nitrile, Knob
VK - Viton, Knob
AK - Nitrile, Knob, Screen
VK - Viton, Knob, Screen
Use screen only if flow direction is from (1) to (2).

Pressure setting
5000 - 69 to 350 bar

Port size (BSP)
B - 3/8"
C - 1/2"
Options - See page B-DDE

No. of ports
2 - 2 ports
Options - See page B-DDE

Body material
A - Aluminium
S - Steel
For pressures over 210 bar use steel.

Knob Part No.
PT-KN22020004