




Up to 240 bar - 30 lpm

This is a direct-acting differential area poppet type relief valve, typically used to provide main relief protection against surge and overload conditions. It is fast acting and dirt tolerant and can be used for continuous duty and intermittent applications providing accurate stable pressure control. It also has a flat pressure rise versus increase in flow rate and a has reasonably high flow capacity relative to physical size.

Operation

The D-PBRVD blocks flow from (1) to (2) until sufficient pressure is present at (1) to force the poppet to open and allow metered flow from (1) to (2). The cartridge offers smooth transition in response to load changes in common hydraulic circuits.

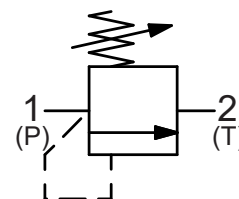
Adjustment

Turn  to increase pressure.

Features

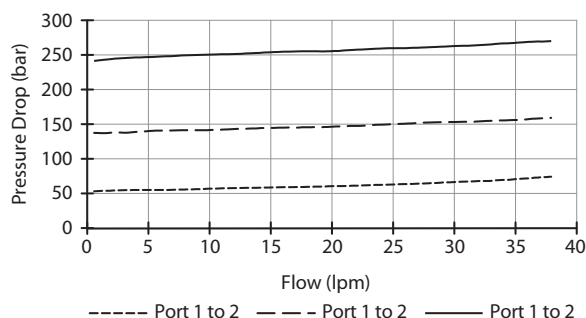
- Hardened parts for long life.
- Industry common cavity.

Symbol



Performance

32 cSc / 38°C.

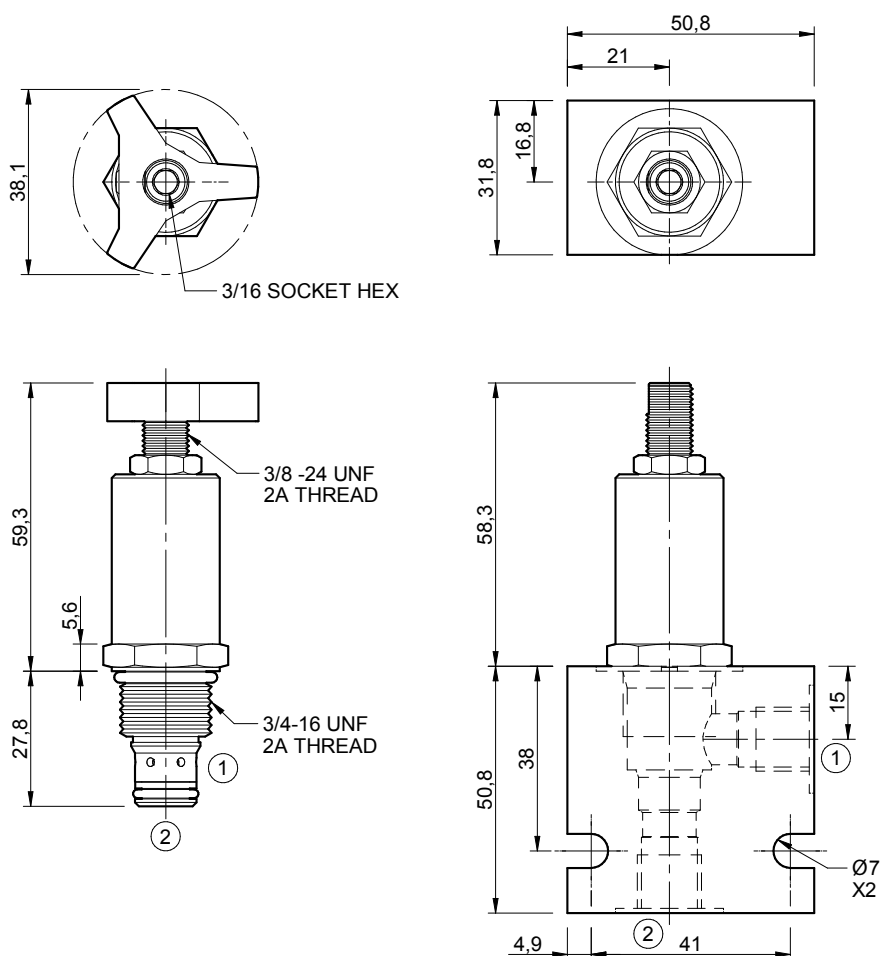


Specifications

Nom. Flow (lpm)	30
Max. Pressure (bar)	240
Hydraulic Oil	General purpose hydraulic fluid
Viscosity Range	3 to 640 cSt
Filtration	ISO 18/16/13
Operating Temp.	-40 to 120°C
Cartridge Torque	34 Nm
Cavity	PB08-2 (see cavity data page CAV-PB08-2)
Spare Seal Kit (Viton)	SK-DPBVHA
Weight - Valve only	0.14 kg
Weight - Valve + Body	0.32 kg (alum) 0.65 kg (steel)

Dimensions

[mm]



Ordering Code

D-PBRVD

D-PBRVD

**

*

*

*

Options

00 - Nitrile

V0 - Viton

0K - Viton, Knob

VK - Viton, Knob

Pressure setting

0800 - 7 to 55 bar

2000 - 55 to 138 bar

3500 - 138 to 240 bar

Port size (BSP)

A - 1/4"

B - 3/8"

Options - See page B-DPB

No. of ports

2 - 2 ports

Options - See page B-DPB

Body material

A - Aluminium

S - Steel

For pressures over 210 bar use steel.

Knob Part No.

PT-KN22020058