




Up to 240 bar - 30 lpm

This is a direct-acting differential area poppet type relief valve, typically used to provide main relief protection against surge and overload conditions. It is fast acting and dirt tolerant and can be used for continuous duty and intermittent applications providing accurate stable pressure control. It also has a flat pressure rise versus increase in flow rate and a has reasonably high flow capacity relative to physical size.

### Operation

The D-PBRWD blocks flow from (1) to (2) until sufficient pressure is present at (1) to force the poppet to open and allow metered flow from (1) to (2). The cartridge offers smooth transition in response to load changes in common hydraulic circuits.

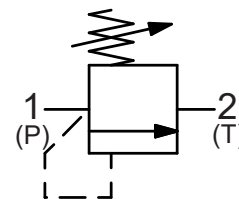
### Adjustment

Turn  to increase pressure.

### Features

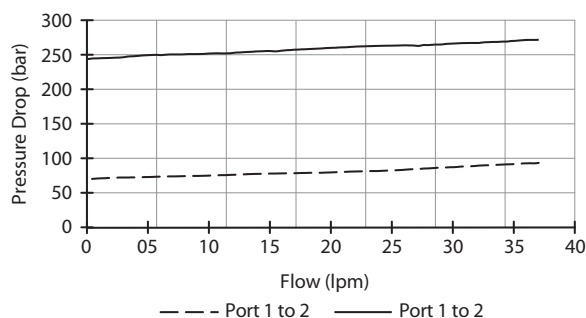
- Hardened parts for long life.
- Industry common cavity.

### Symbol



### Performance

32 cSt / 38°C.

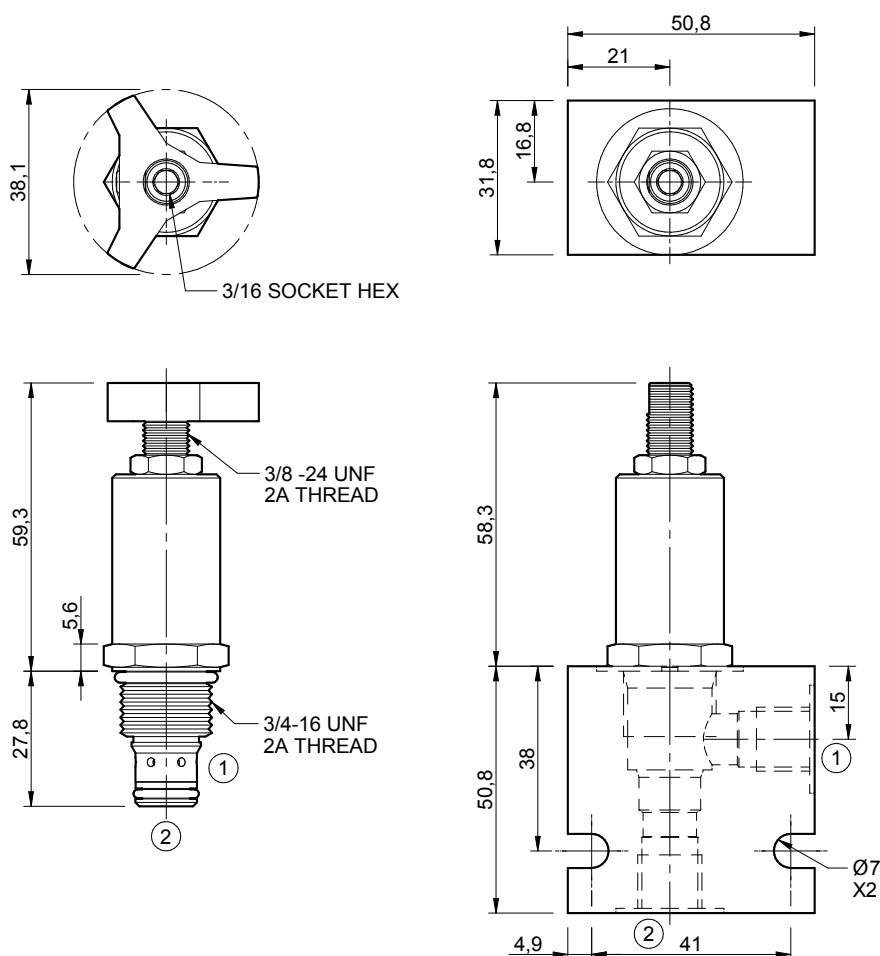


### Specifications

Nom. Flow (lpm)	30
Max. Pressure (bar)	240
Hydraulic Oil	General purpose hydraulic fluid
Viscosity Range	3 to 640 cSt
Filtration	ISO 18/16/13
Operating Temp.	-40 to 120°C
Cartridge Torque	34 Nm
Cavity	PB08-2 (see cavity data page <b>CAV-PB08-2</b> )
Spare Seal Kit (Viton)	SK-DPBVHA
Weight - Valve only	0.15 kg
Weight - Valve + Body	0.33 kg (alum) 0.66 kg (steel)

## Dimensions

[mm]



### Ordering Code

## D-PBRWD

Options
<b>00</b> - Nitrile
<b>V0</b> - Viton
<b>A0</b> - Nitrile, Screen
<b>W0</b> - Viton, Screen
<b>0K</b> - Nitrile, Knob
<b>VK</b> - Viton, Knob
<b>AK</b> - Nitrile, Knob, Screen
<b>VK</b> - Viton, Knob, Screen
<b>Use screen only if flow direction is from (1) to (2).</b>

<b>Knob Part No.</b>
PT-KN22020058

Pressure setting
1000 - 7 to 69 bar
3500 - 34 to 240 bar

<b>Port size (BSP)</b>	<b>No. of ports</b>	<b>Options -</b> See page B-DPB
<b>A - 1/4"</b>	<b>2 - 2 ports</b>	
<b>B - 3/8"</b>		
<b>Options -</b> See page B-DPB		

<b>Body material</b>
<b>A</b> - Aluminium
<b>S</b> - Steel
<b>For pressures over 210 bar use steel.</b>