



Up to 240 bar

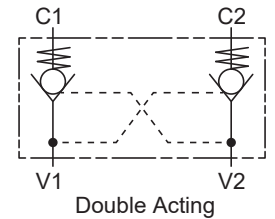
### Description

These valves are used mainly in circuits where a double acting hydraulic cylinder is required to be locked in a load holding position when the pump flow is off.

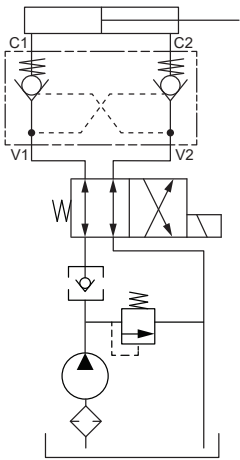
Valve operation is as follows: The passage of oil from V1 to C1 allows the pilot piston to open the check on port C2 thereby permitting free oil flow from port C2 to port V2.

When oil flows from V2 to C2 the reverse effect is obtained. When the directional valve is in the neutral position the load is held on ports C1 and C2.

### Symbol



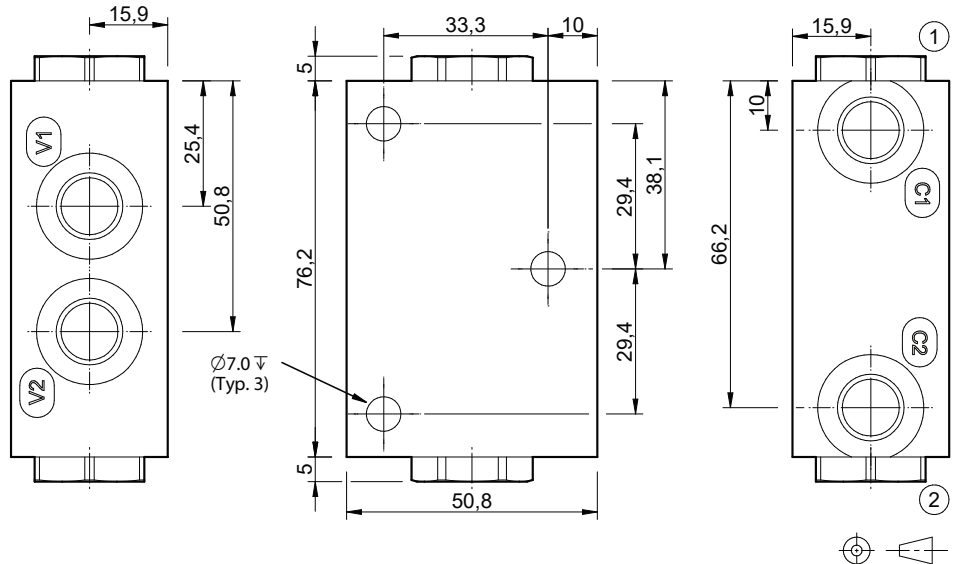
### Schematic



### Specifications

Port Size	G1/4"
Nom. Flow (lpm)	20
Max. Pressure (bar)	240
Viscosity Range	3 to 647 cSt
Operating Temp.	-40°C to + 120°C
Hydraulic Oil	General Purpose Hydraulic Fluid
Pilot Ratio	6.7 : 1
Body Material	Steel (Zinc plate)
Valve Characteristics	See data sheet D-MACVA

### Dimensions



### Ordering Example

RF LC1090 **SP**

Piston Configuration
<b>Omit</b> = Unsealed, Buna
<b>SP</b> = Sealed piston, Buna*
* Sealed pilot piston version available. Used in low flow systems where leakage across pilot piston is important.