

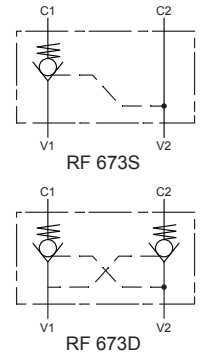


Up to 240 bar - 60 lpm

**Description**

These valves are pilot operated check valves which can be used for locking both double and single acting actuators in position. The typical operation of the dual version RF 673D valve is as follows: the passage of oil from V1 to C1 allows the pilot piston to open the check on port C2 thereby permitting free oil flow from port C2 to port V2. When oil flows from V2 to C2 the reverse effect is obtained. When the directional valve is in the neutral position the load is held on ports C1 and C2. The single version RF 673S works similarly but with only one load holding check on one side. Option "SP" for a sealed pilot piston is used on lower flow systems where leakage is critical.

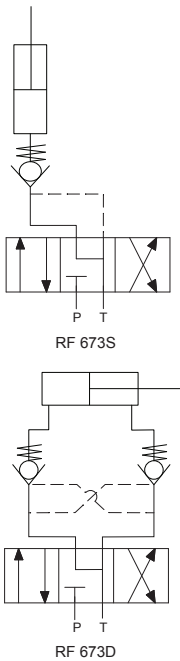
**Symbol**



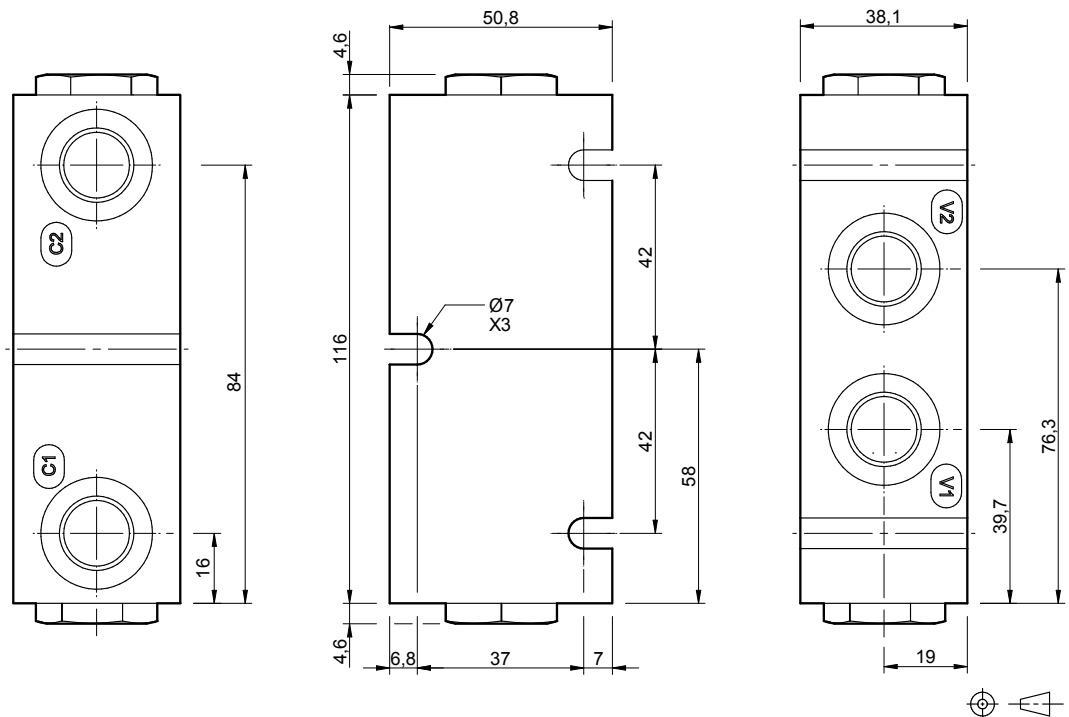
**Specifications**

Size (BSP)	3/8"	Operating Temp.	-40 to 120°C
Nom. Flow (lpm)	60	Pilot Ratio	4:1
Max. Pressure (bar)	240	Body Material	Steel
Hydraulic Oil	General purpose hydraulic fluid	Valve Characteristics	See data sheet D-DECVA
Viscosity Range	3 to 640 cSt		

**Typical Schematic**



**Dimensions**



**Ordering Example**

