



Up to 240 bar - Up to 20 lpm

Description

A banjo mounted dual pilot operated check valve. Using two separate cartridges and a pilot piston, this valve assembly is a compact and economical solution for applications that require minimal use of connections, elbow and pipes. In neutral the check valves are closed with each of the poppets held against the valve seats by the bias springs. When there is sufficient pressure a check valve will open on one side of the circuit simultaneously pushing the opposing check valve open by means of the pilot piston. The same operation is seen in the reverse condition.

Typical applications include but are not limited to: (i) conveyor fold / locking (ii) various outrigger/ stabiliser applications. Please contact our sales office for more information and guidance on higher pressure options that are available.

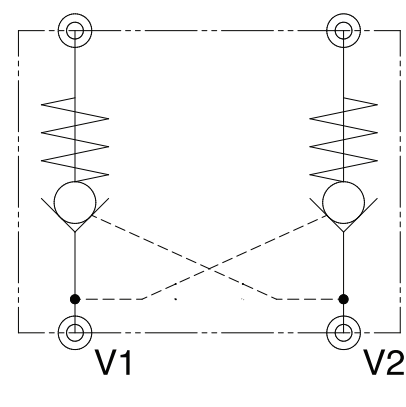
Notes:

- (i) These assemblies are not recommended for systems with flows less than 5 lpm
- (ii) Aluminium body is the standard part number option

Features

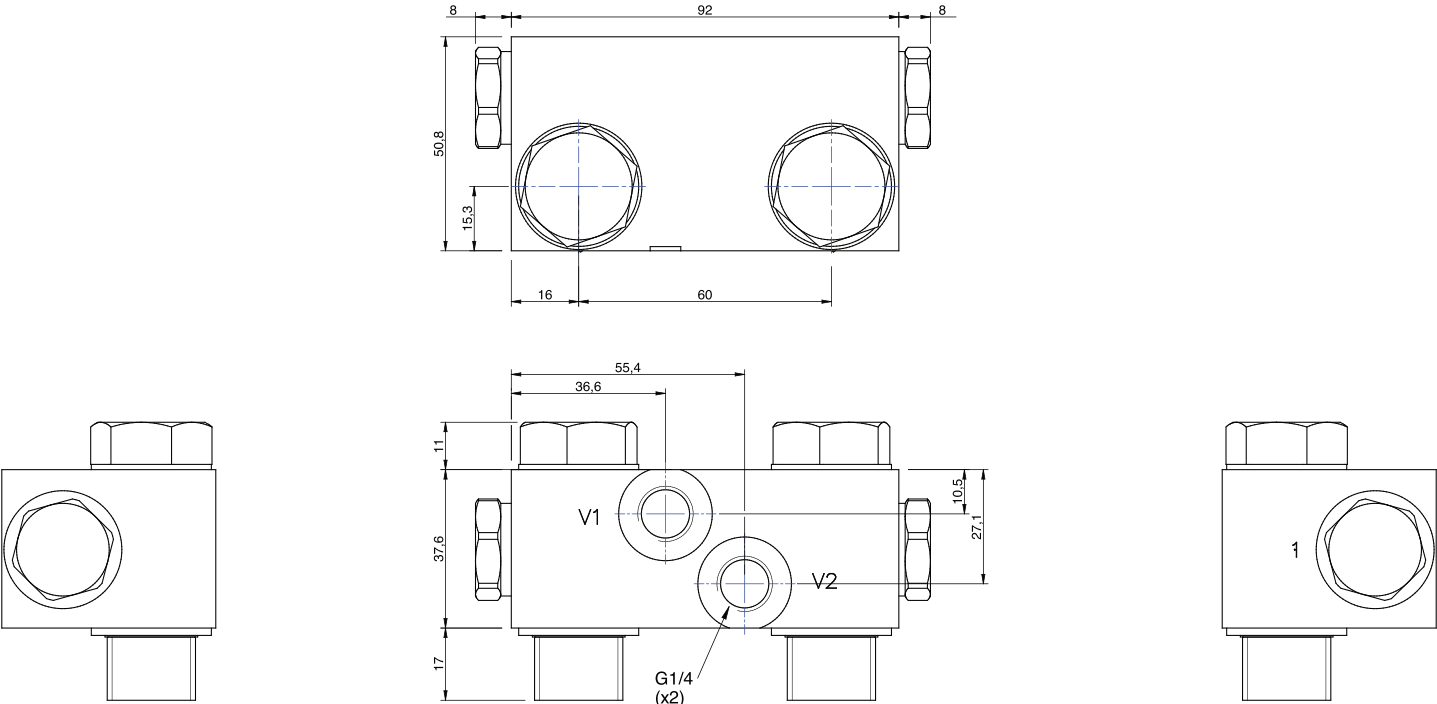
- Aluminium (anodised) or Steel (zinc plated) or material options
- Compact and low profile
- Direct mounting onto the actuator for maximum safety
- Hardened and ground parts for minimal wear and extended service life
- Uses standard size 08 cartridge valves
- Includes Banjo bolts

Circuit



Flow Range (lpm)	20
Max. Pressure (bar)	240
Hydraulic Oil	General purpose hydraulic fluid
Pilot Ratio	4.5:1
Leakage rate	<= 0.1cc/min. @ 420 bar
Viscosity Range	7.4 to 420 cSt
Filtration	ISO 18/16/13
Operating Temp.	-30 to 110°C
Spare Seal Kit	SK-RFLC4695
Weight	1.1 kg (alum) 1.7 kg (steel)

Dimensions



Ordering Example

RF LC4695

**	*
Valve options	Manifold Material
00 = Std	A = Aluminium (clear anodised)
V0 = Viton seals	S = Steel (350 bar max zinc, clear passivate)