



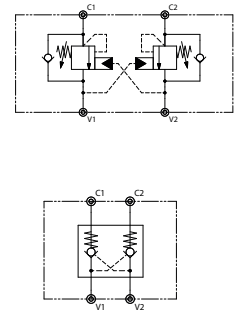
Variable, 350 bar max. - Up to 60 lpm

Description

A line mounted dual pilot operated check valve / dual over centre valve or mix. Using two separate cartridges from a selection of pilot operated check or overcentre this valve assembly is a compact and economical solution for applications that require minimal use of connections, elbow and pipes. In neutral the valves are closed with each of the poppets held again the valve seats by the bias springs. When oil flow is applied to one side of the circuit e.g. port V1, the check feature in valve 1 is overcome with oil flow exiting port C1. When there is sufficient load, a pilot signal is communicated to valve 2 allowing it to open. Oil exits the actuator returning via port C2, through valve 2, then out of port V2. On the return side, if a P.O. check is used the valve will fully open with no metering, if an overcentre valve is used, metering will be present dependant on load / pilot pressure. The same operation is seen in the reverse condition $V2 > C2$, $C1 > C1$. Atmospheric vented cartridge option (insensitive to back pressure) is available for systems using meter out flow control upstream of the valve assembly.

These valve assemblies can be applied a wide range of motor and cylinder applications where load holing or metering of a load is required. Such applications include but are not limited to: (i) conveyor position and drive (ii) various outrigger/stabiliser applications (iii) Articulated booms. Please contact our sales office for more information and guidance on other options that are available.

Circuit

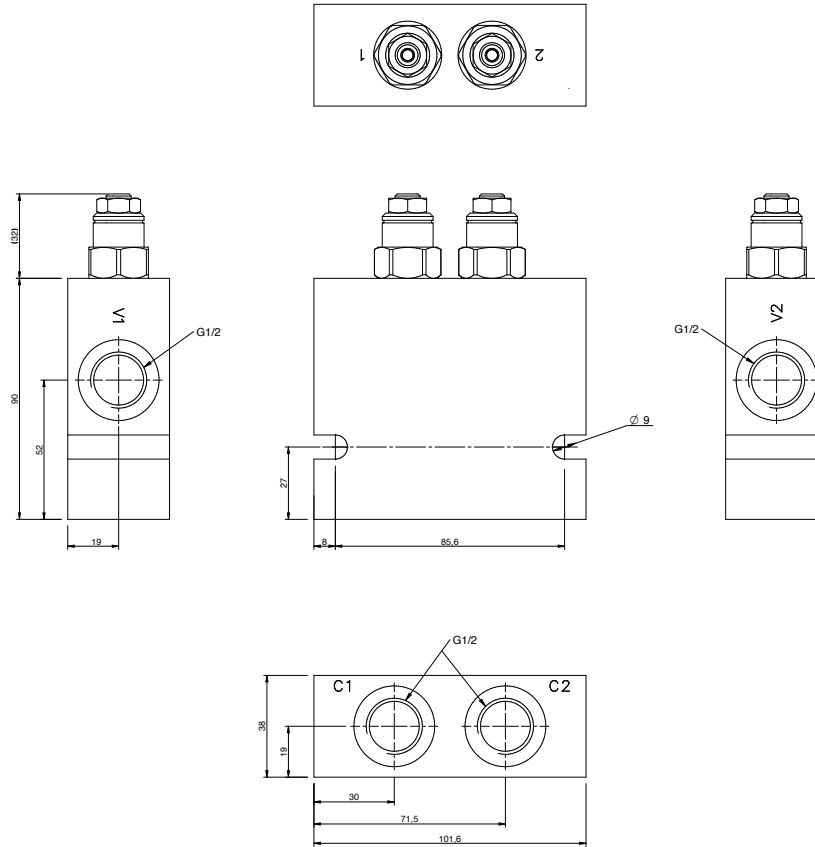


Features

- Aluminium (anodised) or Steel (zinc plated) material options
- Compact and low profile
- Maximised internal galleries for optimised efficiency.
- Uses standard T-11A cartridge valves
- Four cartridge options available with additional options available on request

Flow Range (lpm)	60
Max. Pressure (bar)	350
Hydraulic Oil	General purpose hydraulic fluid
Pilot Ratio	See options table
Viscosity Range	7.4 to 420 cSt
Filtration	ISO 18/16/13
Operating Temp.	-30 to 110°C
Spare Seal Kit	SK-RFLC5050
Weight	1.1 kg (alum) 2.5 kg (steel)

Dimensions



Ordering Example

RF LC5050

	*	**	*	**	**	*
Valve 1 type	Valve 2 Pressure setting		Valve 2 type	Valve 2 Pressure setting		Seal options
A = P.O. check, unvented, 3:1	XX = N/A		A = P.O. check, unvented, 3:1	XX = N/A		00 = Std
B = P.O. check, vented, 3:1	21 = 210 Bar** **10 Bar increments		B = P.O. check, vented, 3:1	21 = 210 Bar** **10 Bar increments		V0 = Viton seals
C = Overcentre, unvented, 3:1	**21 = std. setting		C = Overcentre, unvented, 3:1	**21 = std. setting		Manifold Material A = Aluminium (clear anodised) 240 bar max. S = Steel, clear (zinc passivate) 250 bar max.
D = Overcentre, vented, 3:1	Min. setting = 70 bar		D = Overcentre, vented, 3:1	Min setting = 70 bar		
	Max. setting = 210 bar			Max. setting = 210 bar		