

Up to 350 bar - Up to 25 lpm

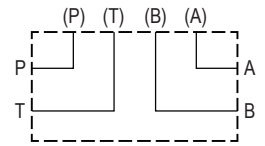
Description

A compact subplate with basic 4 port layout. Optimised internal drillings ensure that pressure drops are minimised for best system efficiency. Typical applications include road sweepers and sprayer applications where space is at a premium.

Features

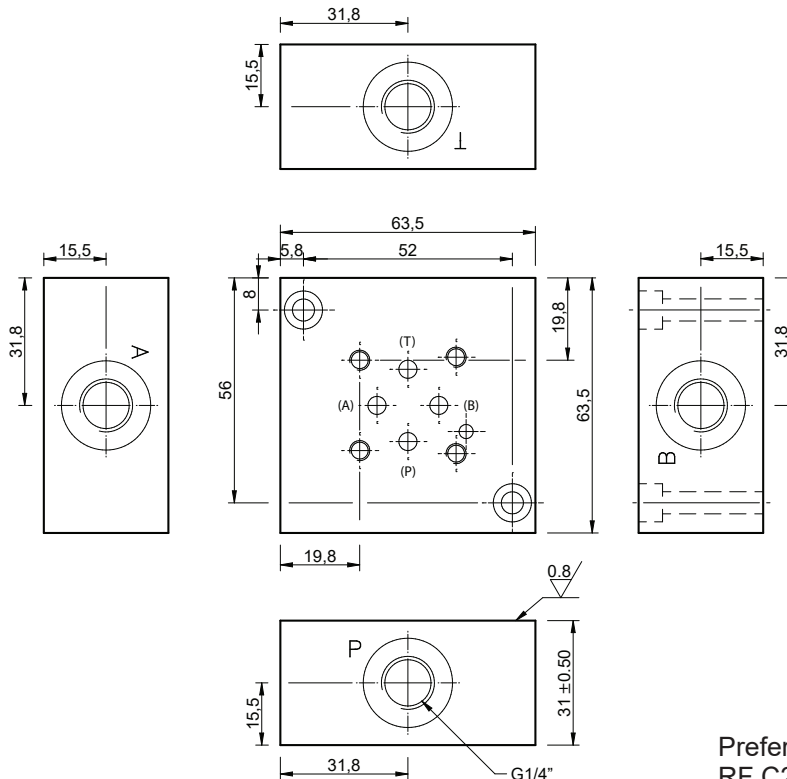
- Aluminium (anodised) or Steel (zinc plated) material options.
- Compact, efficient design.
- Various valve options available on request.
- Compact, efficient design.

Symbol



Flow Range (lpm)	25
Max. Pressure (bar)	350
Hydraulic Oil	General purpose hydraulic fluid
Viscosity Range	3 to 640 cSt
Filtration	ISO 18/16/13
Operating Temp.	-40 to 120°C
Spare Seal Kit	SK-RFC21694
Weight	0.31 kg (alum) 0.9 kg (steel)

Dimensions



Ordering Code

RF C21694 **** ** **

Directional Valve
e.g.0630, 0710 etc. See data sheet RS2-**** for codes.
0000 - No valve.

Voltage
00 = No Coil
12 = 24 Vdc
24 = 24 Vdc
DIN connection only

Manifold Material
A = Aluminium (210 bar max, clear anodised)
S = Steel (350 bar max, zinc plated)

Preferred Standard Model Code(s):
RF C21694000000A
RF C21694071312A
RF C21694071324A